

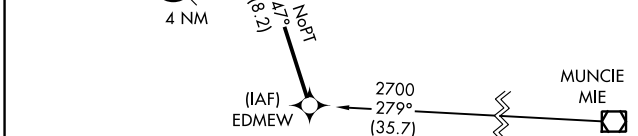
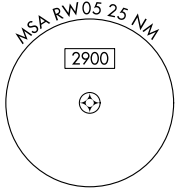
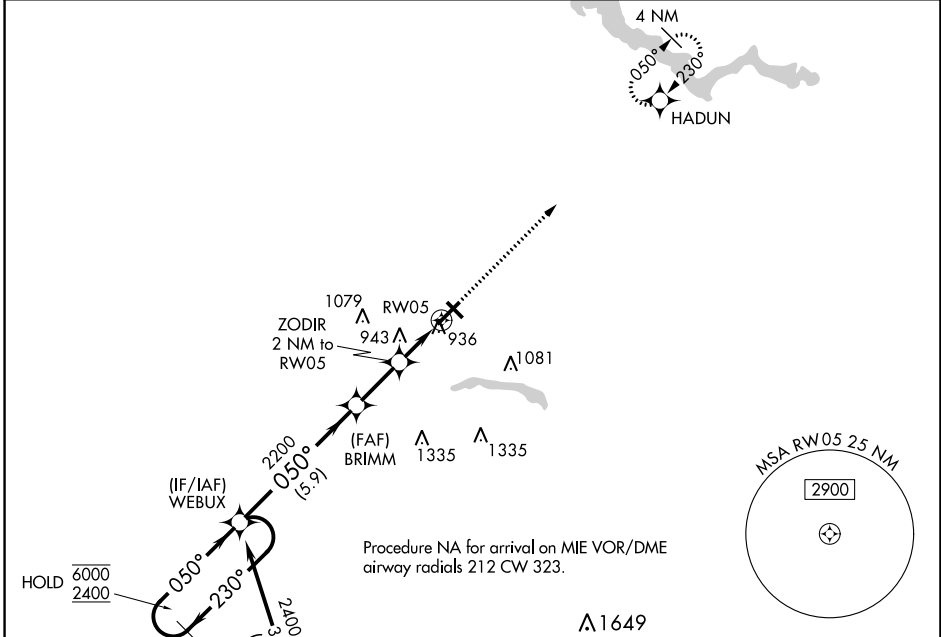
WAAS CH <b>78139</b> <b>W05A</b>	APP CRS <b>050°</b>	Rwy Idg TDZE <b>832</b> Apt Elev <b>832</b>	<b>6001</b>
--	------------------------	---	-------------

# RNAV (GPS) RWY 5

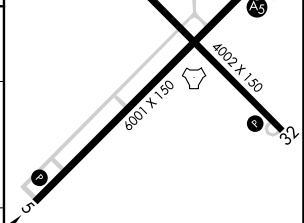
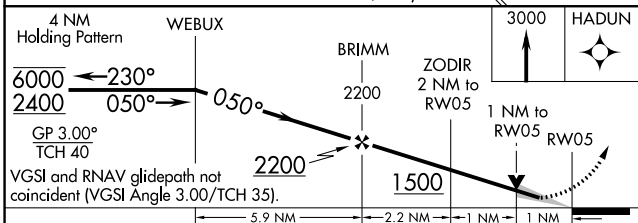
KOKOMO MUNI (OKK)

RNP APCH - GPS.	MISSED APPROACH: Climb to 3000 direct HADUN and hold.
▼ For uncompensated Baro-VNAV systems, LNAV/VNAV NA below -16°C or above 54°C.	

AWOS-3PT <b>128.675</b>	GRISSOM APP CON* <b>121.05 338.275</b>	CLNC DEL <b>120.0</b>	UNICOM <b>123.0 (CTAF) 0</b>
----------------------------	---	--------------------------	---------------------------------



ELEV 832	TDZE 832
----------	----------



CATEGORY	A	B	C	D
LPV DA		1082-3/4	250 (300-3/4)	
LNAV/VNAV DA		1102-7/8	270 (300-7/8)	
LNAV MDA		1200-1	368 (400-1)	
CIRCLING	1260-1	1300-1	1400-1 1/2	1420-2
	428 (500-1)	468 (500-1)	568 (600-1 1/2)	588 (600-2)

HIRL Rwy 5-23 0  
MIRL Rwy 14-32 0  
REIL Rws 5, 14 and 32 0

EC-2, 31 OCT 2024 to 28 NOV 2024

EC-2, 31 OCT 2024 to 28 NOV 2024