

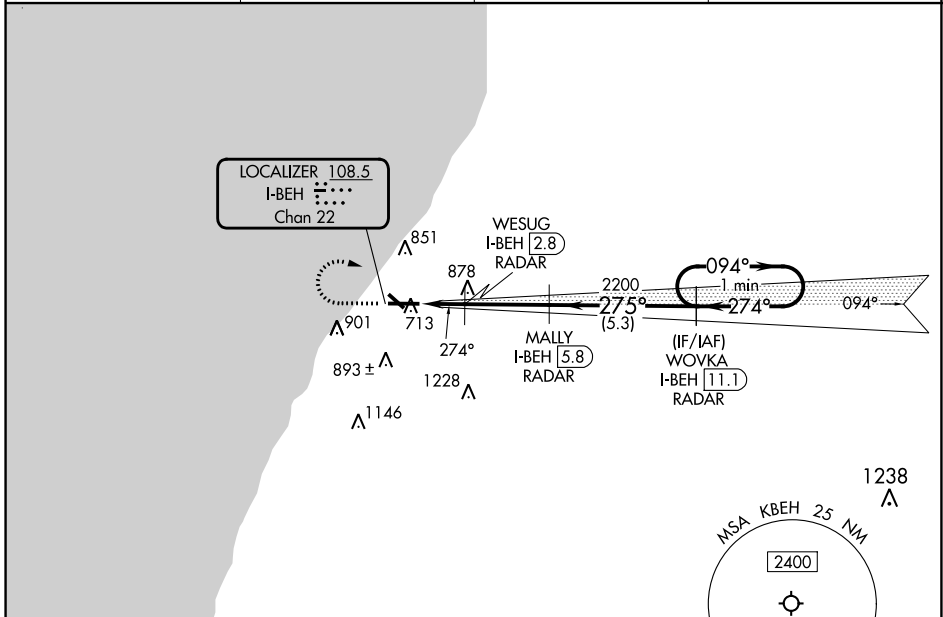
LOC I-BEH <b>108.5</b>	APP CRS <b>274°</b>	Rwy Idg TDZE Apt Elev	<b>6006</b> <b>649</b> <b>649</b>
Chan <b>22</b>			

# ILS or LOC RWY 28

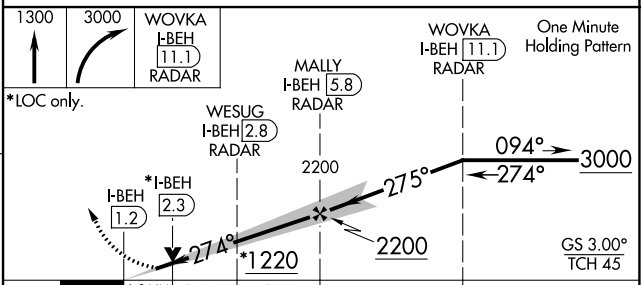
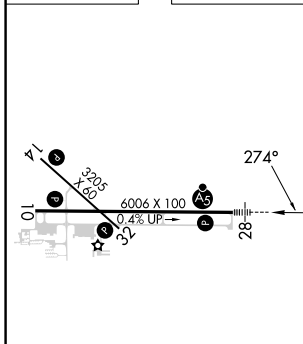
SOUTHWEST MICHIGAN RGNL (BEH)

RNAV 1-GPS required.		MALSR 	MISSED APPROACH: Climb to 1300 then climbing right turn to 3000 direct WOYKA and hold.
DME Required for LOC only.			
	Circling Rwy 14 and 32 NA at night.		
	For inop ALS, increase S-LOC 28 Cat C/D visibility to 1/8 SM.		

ASOS <b>121.55</b>	SOUTH BEND APP CON* <b>118.55 257.8</b>	SOUTH BEND CLNC DEL <b>119.7</b>	UNICOM <b>123.0 (CTAF) 0</b>
-----------------------	--	-------------------------------------	---------------------------------



ELEV 649	TDZE 649
----------	----------



CATEGORY	A	B	C	D
S-ILS 28		849-1/2	200 (200-1/2)	
S-LOC 28	1060-1/2	411 (500-1/2)	1060-3/4	411 (500-3/4)
CIRCLING	1140-1 491 (500-1)	1160-1 511 (600-1)	1300-1 3/4 651 (700-1 3/4)	1340-2 691 (700-2)

EC-1, 31 OCT 2024 to 28 NOV 2024

EC-1, 31 OCT 2024 to 28 NOV 2024