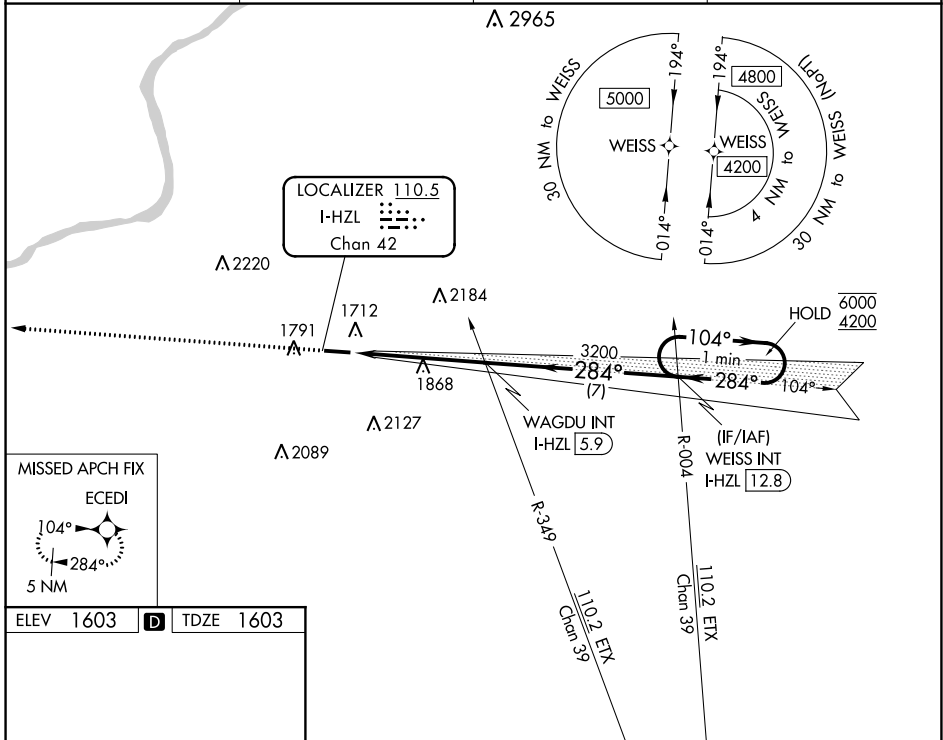


LOC/DME I-HZL 110.5 Chan 42	APP CRS 284°	Rwy Idg 4898 TDZE 1603 Apt Elev 1603
---	------------------------	---

LOC RWY 28
HAZLETON RGNL (HZL)

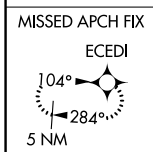
RNAV 1-GPS required for procedure entry. RNAV 1-GPS required from MAP to ECEDI.	MALS ☉	MISSED APPROACH: Climb to 4400 direct ECEDI and hold.
▼ ▲ NA Rwy 28 helicopter visibility reduction below 3/4 SM NA. Inop table does not apply to Cats A/B. For inop ALS, increase Cat C/D visibility to 1 1/8 SM.		

AWOS-3 119.975	WILKES-BARRE APP CON 126.3 256.7	CLNC DEL 121.7	UNICOM 123.0 (CTAF) ①
--------------------------	--	--------------------------	---------------------------------

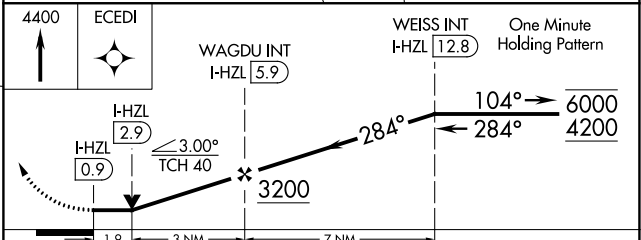
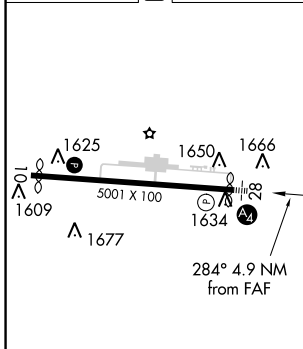


NE-4, 31 OCT 2024 to 28 NOV 2024

NE-4, 31 OCT 2024 to 28 NOV 2024



ELEV 1603	D	TDZE 1603
------------------	----------	------------------



FAF to MAP 4.9 NM						
	Knots	60	90	120	150	180
	Min:Sec	4:54	3:16	2:27	1:58	1:38
C CIRCLING	CATEGORY	A	B	C	D	
	S-LOC 28	2280-1	677 (700-1)	2280-1 3/4	677 (700-1 3/4)	
		2280-1	2400-1	2480-2 1/2	2520-3	
		677 (700-1)	797 (800-1)	877 (900-2 1/2)	917 (1000-3)	