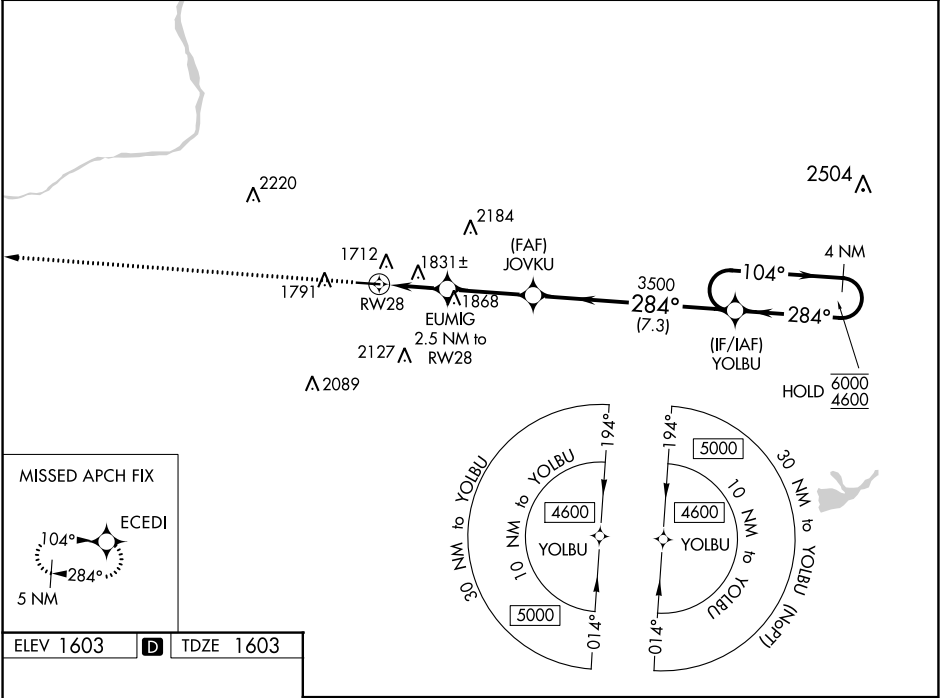


WAAS CH <b>50140</b> <b>W28A</b>	APP CRS <b>284°</b>	Rwy Idg TDZE Apt Elev	<b>4898</b> <b>1603</b> <b>1603</b>
--	------------------------	-----------------------------	---

# RNAV (GPS) RWY 28

HAZLETON RGNL (HZL)

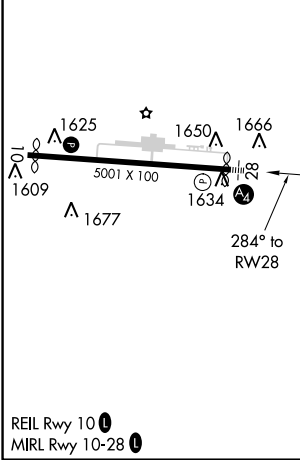
RNP APCH.	MALS 	MISSED APPROACH: Climb to 4400 direct ECEDI and hold.
<b>AWOS-3</b> <b>119.975</b>	<b>WILKES-BARRE APP CON</b> <b>126.3 256.7</b>	<b>CLNC DEL</b> <b>121.7</b>
		<b>UNICOM</b> <b>123.0 (CTAF) </b>



NE-4, 31 OCT 2024 to 28 NOV 2024

NE-4, 31 OCT 2024 to 28 NOV 2024

ELEV 1603	<b>D</b>	TDZE 1603
-----------	----------	-----------



4400	ECEDI	EUMIG	JOVKU	YOLBU	4 NM Holding Pattern
*LNAV only.		2.5 NM to RWY 28	3500	104° → 6000	← 284° 4600
*1.4 NM to RWY 28		2460*	3500	GP 3.17° TCH 40	
1.4		1.1	3.1 NM	7.3 NM	
CATEGORY	A	B	C	D	
LPV DA	1978-1		375 (400-1)		
LNAV/VNAV DA	2143-1¼		540 (600-1¼)		
LNAV MDA	2100-1	497 (500-1)		2100-1½	497 (500-1½)
<b>C</b> CIRCLING	2140-1 537 (600-1)	2400-1 797 (800-1)	2480-2½ 877 (900-2½)		2520-3 917 (1000-3)