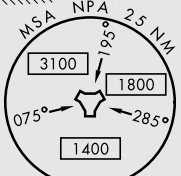
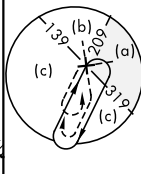
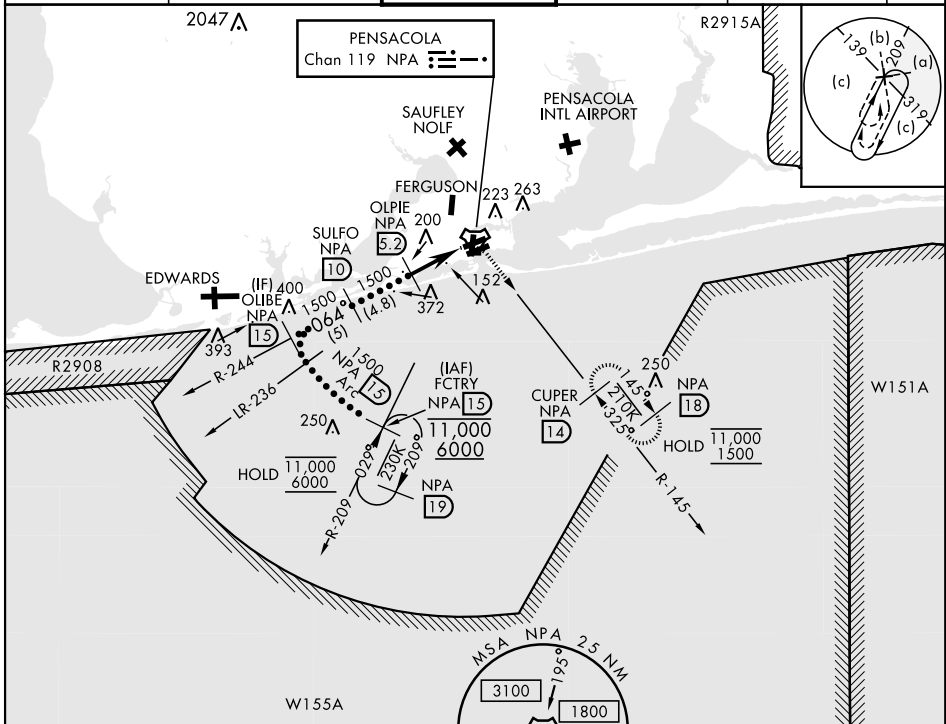


HI-TACAN Z RWY 7L

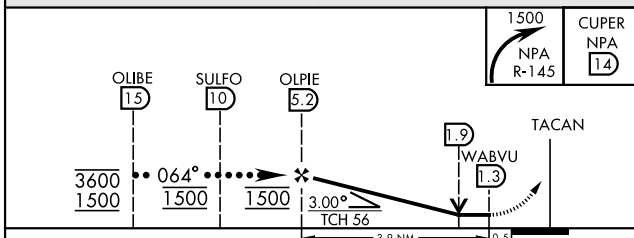
TACAN NPA Chan 119	APCH CRS 064°	Rwy ldg TDZE Arprt Elev 8001 23 28
RADAR required.		
* When ALS inop, increase vis to 1 ½ miles.		

AL-736 [USN]	PENSACOLA NAS (FORREST SHERMAN FLD) (KNPA)
ALSF-1 	MISSED APPROACH: Climbing right turn to 1500 via NPA TACAN R-145 to CUPER and hold.

ATIS 124.35 266.8	PENSACOLA APP CON 120.65 270.8	SHERMAN TOWER 120.7 340.2	GND CON 121.7 336.4	CLNC DEL 134.1 268.7	ASR/ PAR
-----------------------------	--	-------------------------------------	-------------------------------	--------------------------------	-------------

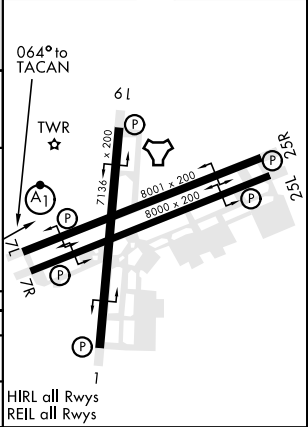


EMERG SAFE ALT 100 NM 3100



ELEV	28	TDZE	23
------	----	------	----

CATEGORY	C	D	E
S-7L *	440-¾	417 (500-¾)	
CIRCLING	540-1 ½ 512 (600-1 ½)	580-2	552 (600-2)



HI-TACAN Z RWY 7L

SE-3, 31 OCT 2024 to 28 NOV 2024

SE-3, 31 OCT 2024 to 28 NOV 2024