

PENSACOLA, FLORIDA

# RNAV (GPS) RWY 25R

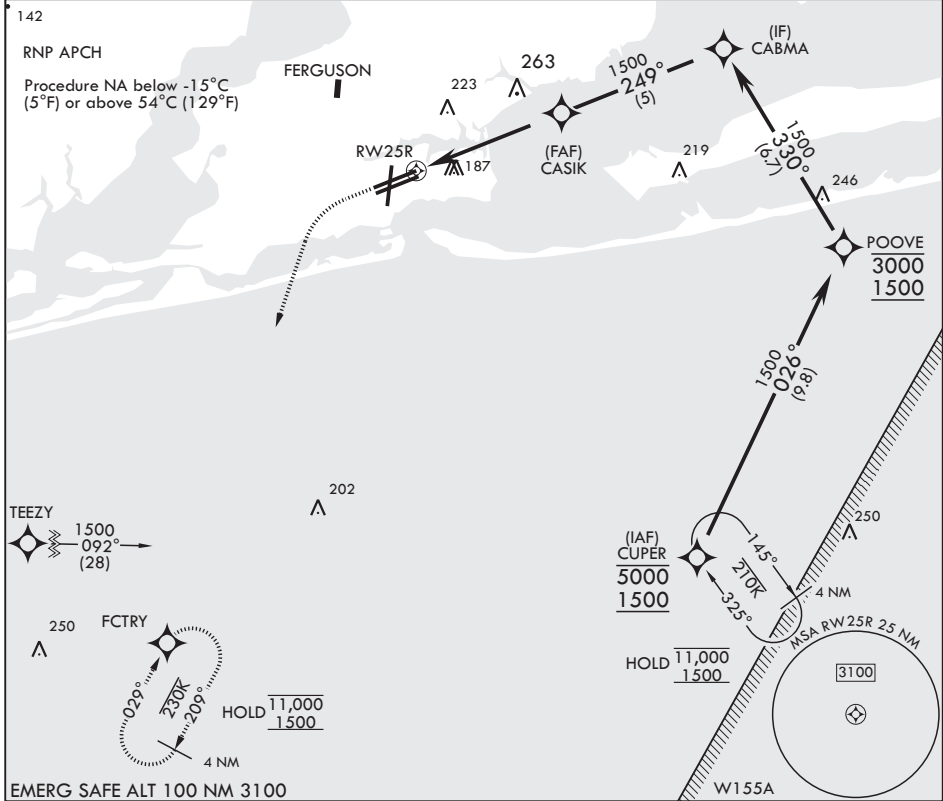
APCH CRS <b>249°</b>	Rwy Idg <b>8001</b>
	TDZE <b>21</b>
	Arpt Elev <b>28</b>

AL-736 (USN)

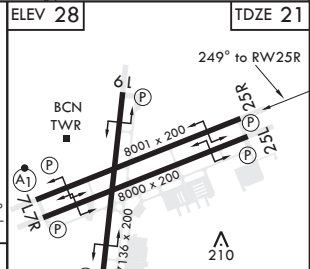
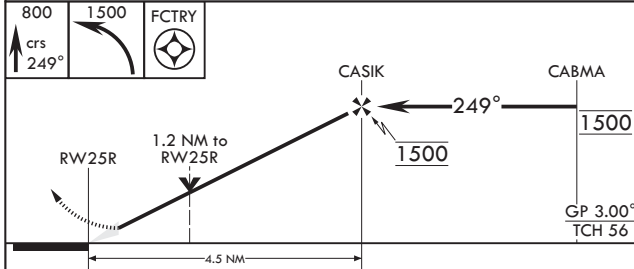
PENSACOLA NAS (FORREST SHERMAN FLD) (KNPA)

MISSED APPROACH: Climb to 800 then climbing left turn to 1500 direct FCTRY and hold.

ATIS <b>124.35 266.8</b>	APP CON <b>120.65 270.8</b>	SHERMAN TOWER <b>120.7 340.2</b>	SHERMAN GND CON <b>121.7 336.4</b>	SHERMAN CLNC DEL <b>134.1 268.7</b>	ASR/PAR
-----------------------------	--------------------------------	-------------------------------------	---------------------------------------	--	---------



EMERG SAFE ALT 100 NM 3100



CATEGORY	A	B	C	D
LNAV/VNAV DA	440-1 $\frac{1}{8}$		419	(500-1 $\frac{1}{8}$ )
LNAV MDA	440-1	419 (500-1)	440-1 $\frac{1}{8}$	419 (500-1 $\frac{1}{8}$ )
CIRCLING	520-1	492 (500-1)	540-1 $\frac{1}{2}$ 512 (600-1 $\frac{1}{2}$ )	580-2 552 (600-2)

HIRL all Rwys  
REIL all Rwys

PENSACOLA, FLORIDA

30°21'N - 87°19'W PENSACOLA NAS (FORREST SHERMAN FLD) (KNPA)

Amdt 7 02DEC21

# RNAV (GPS) RWY 25R

SE-3, 31 OCT 2024 to 28 NOV 2024

SE-3, 31 OCT 2024 to 28 NOV 2024