

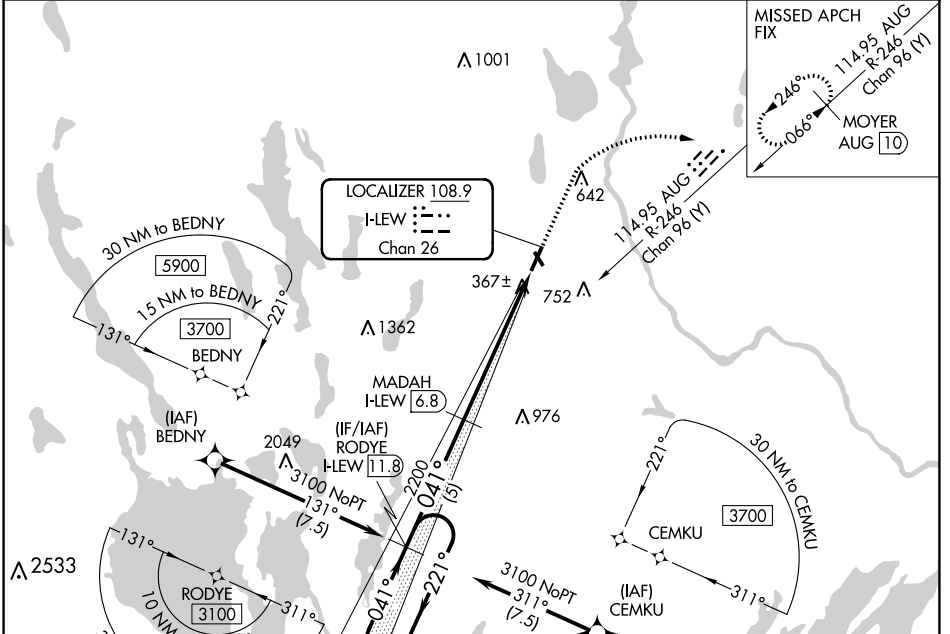
LOC/DME I-LEW <b>108.9</b> Chan <b>26</b>	APP CRS <b>041°</b>	Rwy Idg TDZE Apr Elev	<b>5001</b> <b>270</b> <b>288</b>
---	------------------------	-----------------------------	---

# ILS or LOC RWY 4

AUBURN/LEWISTON MUNI (LEW)

DME required. RNP APCH - GPS.		MALSR 	MISSED APPROACH: Climb to 900 then climbing right turn to 3000 on heading 080° and on AUG VOR/DME R-246 to MOYER/AUG 10 DME and hold.
<p><b>▼</b> Circling to Rwy 17, 22, 35 NA at night. For inop ALS, increase S-LOC 4 Cat A visibility to 1 SM, and Cat C/D to 2½ SM.</p>			

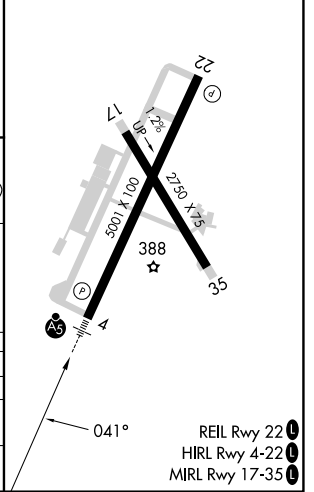
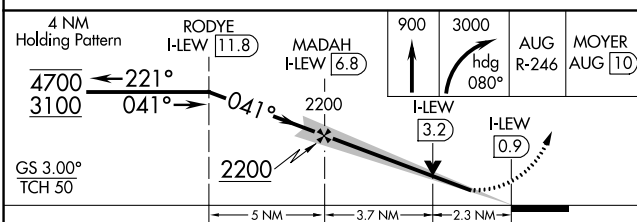
AWOS-3PT <b>118.025</b>	PORTLAND APP CON ★ <b>125.5 353.9</b>	CLNC DEL <b>124.05</b>	UNICOM <b>122.8</b> (CTAF) <b>0</b>
----------------------------	--	---------------------------	--



NE-1, 31 OCT 2024 to 28 NOV 2024

NE-1, 31 OCT 2024 to 28 NOV 2024

ELEV 288	TDZE 270
----------	----------



CATEGORY	A	B	C	D
S-ILS 4		470-½	200 (200-½)	
S-LOC 4	1040-½ 770 (800-½)	1040-¾ 770 (800-¾)	1040-1¾ 770 (800-1¾)	770 (800-1¾)
<b>C</b> CIRCLING	1040-1 752 (800-1)	1040-1¼ 752 (800-1¼)	1060-2½ 772 (800-2½)	1120-2¾ 832 (900-2¾)

- REIL Rwy 22 **0**
- HIRL Rwy 4-22 **0**
- MIRL Rwy 17-35 **0**