

# MOLOKAI FIVE DEPARTURE

RADAR and DME required

**TOP ALTITUDE:  
ASSIGNED BY ATC**

### TAKEOFF MINIMUMS

Rwys 26L/R: Standard.

Rwys 4L/R: Standard with minimum climb of 425' per NM to 1900, do not exceed 180K until established on assigned heading.

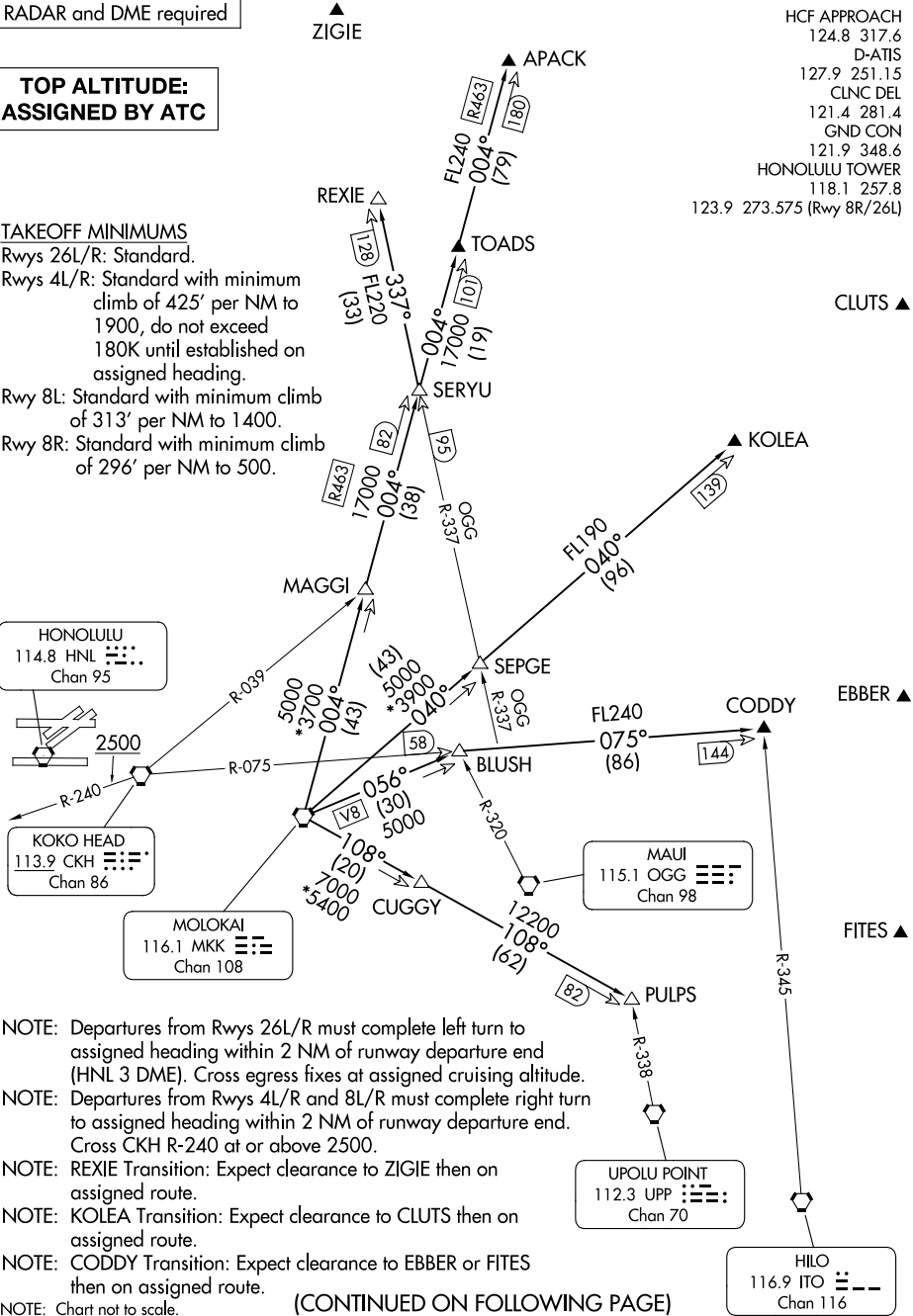
Rwy 8L: Standard with minimum climb of 313' per NM to 1400.

Rwy 8R: Standard with minimum climb of 296' per NM to 500.

HCF APPROACH  
124.8 317.6  
D-ATIS  
127.9 251.15  
CLNC DEL  
121.4 281.4  
GND CON  
121.9 348.6  
HONOLULU TOWER  
118.1 257.8  
123.9 273.575 (Rwy 8R/26L)

PAC, 31 OCT 2024 to 26 DEC 2024

PAC, 31 OCT 2024 to 26 DEC 2024



# MOLOKAI FIVE DEPARTURE