

LOC/DME I-LNY 111.1 Chan 48	APP CRS 033°	Rwy Idg TDZE Apt Elev	5000 1307 1308
-------------------------------------------------	------------------------	-----------------------------	-------------------------------------------

ILS or LOC RWY 3

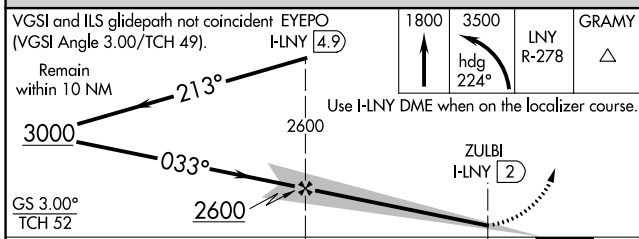
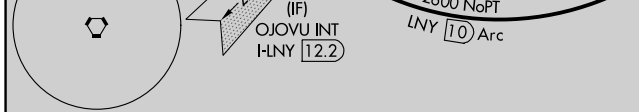
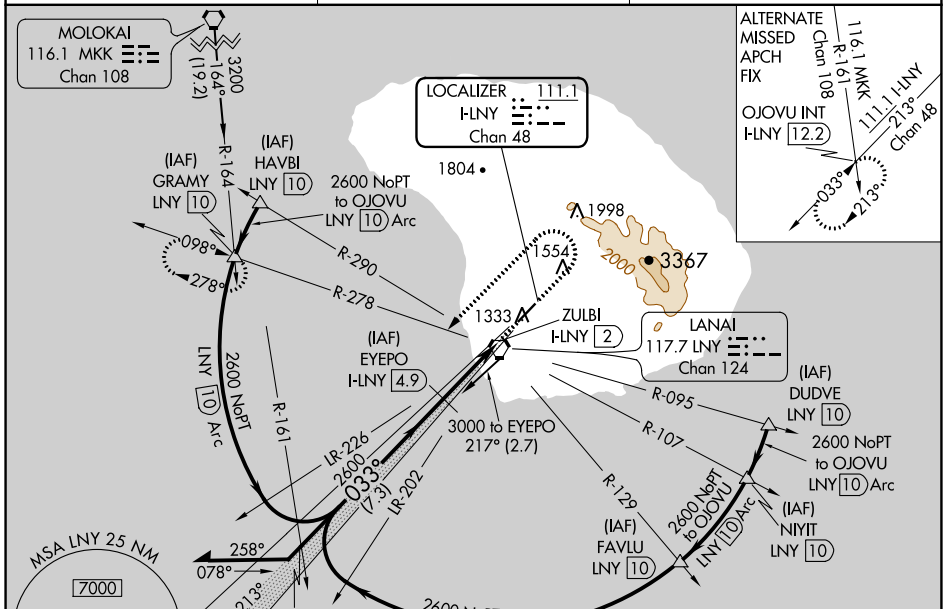
LANAI (LNY)(PHNY)

DME required.

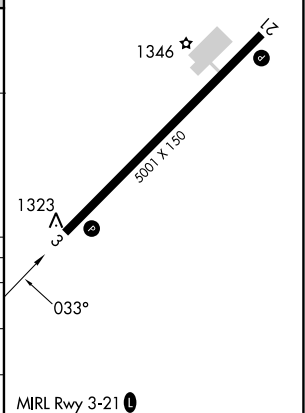
NA Circling Rwy 21 NA at night. Autopilot coupled approach NA below 1505. When local altimeter setting not received, procedure NA, except for operators with approved weather reporting service. Circling NA for Cat C southeast of Rwy 3-21.

MISSED APPROACH: Climb to 1800 then climbing left turn to 3500 on heading 224° and LNY VORTAC R-278 to GRAMY INT/LNY VORTAC 10 DME and hold.

AWOS-3P 118.375	HCF CENTER 119.3 307.1	CTAF 122.9
---------------------------	----------------------------------	----------------------



ELEV 1308	TDZE 1307
-----------	-----------



CATEGORY	A	B	C	D
S-ILS 3		1588-1	281 (300-1)	
S-LOC 3		1580-1¼	273 (300-1¼)	
CIRCLING	1900-1¼ 592 (600-1¼)	1940-1¼ 632 (700-1¼)	2140-2½ 832 (900-2½)	NA

PAC, 31 OCT 2024 to 26 DEC 2024

PAC, 31 OCT 2024 to 26 DEC 2024