

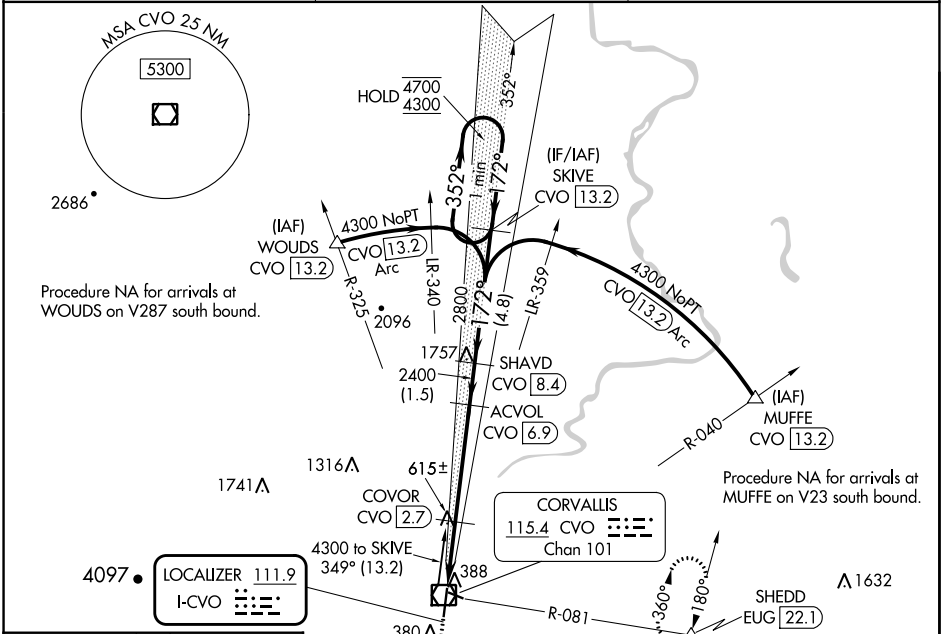
LOC I-CVO <b>111.9</b>	APP CRS <b>172°</b>	Rwy ldg <b>5900</b>
		TDZE <b>248</b>
		Apt Elev <b>250</b>

# ILS or LOC RWY 17

CORVALLIS MUNI (CVO)

DME required.	MALSR	MISSED APPROACH: Climb to 900 then climbing left turn to 3000 on heading 050° and on CVO VOR/DME R-081 to SHEDD INT/EUG 22.1 DME and hold, continue climb-in-hold to 3000.
<p>⚠ Circling Rwy 28 NA at night. For inop ALS, increase S-LOC 17 Cat C/D visibility to 1¼ SM. DME from CVO VOR/DME.</p> <p>⚠ DME use requires simultaneous reception of I-CVO and CVO DME.</p>		

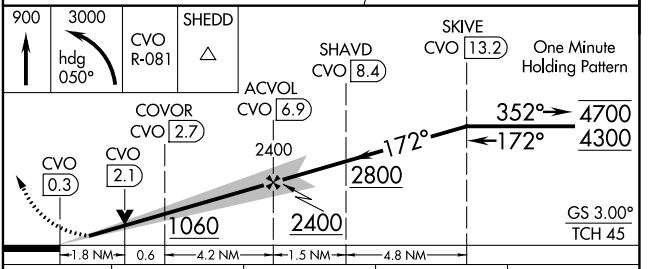
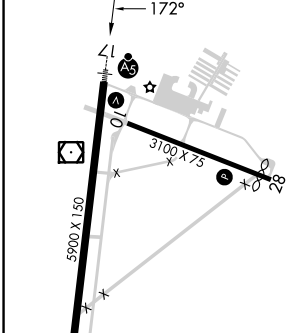
AWOS-3PT <b>135.775</b>	CASCADE APP CON ★ <b>127.5 348.7</b>	UNICOM <b>123.075 (CTAF) ①</b>
----------------------------	---	-----------------------------------



NW-1, 31 OCT 2024 to 28 NOV 2024

NW-1, 31 OCT 2024 to 28 NOV 2024

ELEV 250	D TDZE 248
----------	------------



CATEGORY	A	B	C	D
S-LS 17	448-½ 200 (200-½)			
S-LOC 17	880-½	632 (700-½)	880-1¾	632 (700-1¾)
ⓐ CIRCLING	880-1	630 (700-1)	920-1¾ 670 (700-1¾)	1060-2½ 810 (900-2½)

FAF to MAP 6.6 NM					
Knots	60	90	120	150	180
Min:Sec	6:36	4:24	3:18	2:38	2:14

CORVALLIS, OREGON  
Amdt 6 20APR23

44°30'N-123°17'W

# CORVALLIS MUNI (CVO)

## ILS or LOC RWY 17