

| | | |
|---|------------------------|---|
| LOC/DME I-LCI 108.5 Chan 22 | APP CRS 084° | Rwy Idg 5646 TDZE 545 Apt Elev 545 |
|---|------------------------|---|

ILS or LOC RWY 8

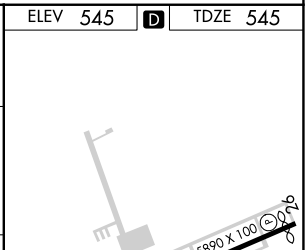
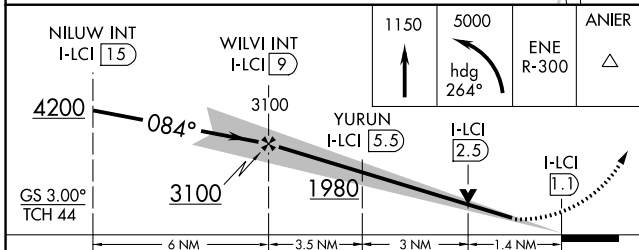
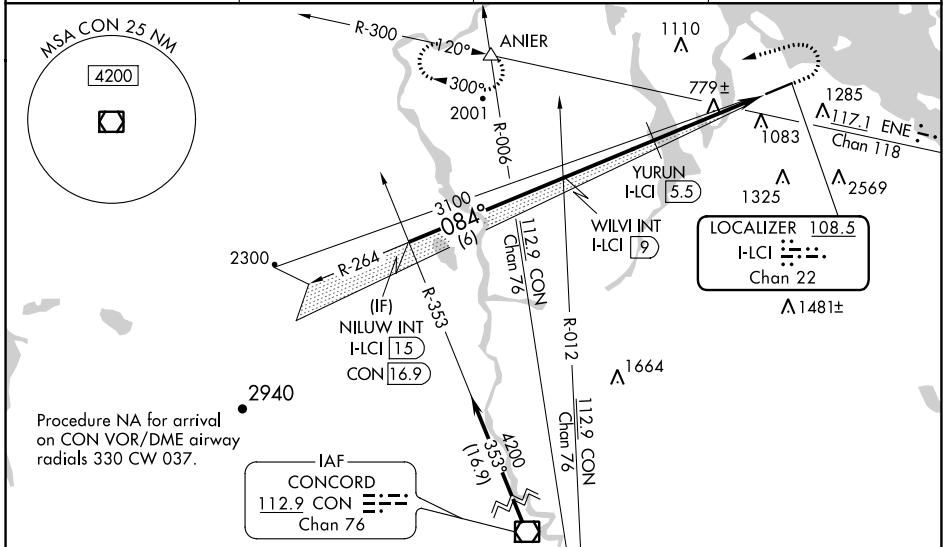
LACONIA MUNI (LCI)

⚠ Circling NA south of Rwy 8-26. Circling Rwy 26 NA at night. For inop ALS, increase S-ILS 8 visibility all Cats 1/8 SM, YURUN fix minimums increase S-LOC 8 Cats C and D visibility 1/4 SM. When local altimeter setting not received, use Concord altimeter setting and increase S-ILS * DA to 876 feet; increase S-ILS 8 DA to 983 feet and all visibilities 1/8 SM and increase all MDAs 100 feet, increase S-LOC 8 visibility Cat A 1/2 SM. Increase YURUN fix minimums visibility Cats C/D 1/4 SM and Circling visibility Cat C 1/4 SM. Inop table does not apply to S-LOC 8 Cats C and D.

MALSR
AS

MISSED APPROACH: Climb to 1150 then climbing left turn to 5000 on heading 264° and ENE VOR/DME R-300 to ANIER INT and hold, continue climb-in-hold to 5000.
*Missed approach requires minimum climb of 295 feet per NM to 1500.

| | | | |
|----------------------------|--|---------------------------|---------------------------------|
| AWOS-3PT 133.525 | BOSTON APP CON 134.75 254.25 | CLNC DEL 119.85 | UNICOM 123.0 (CTAF) 0 |
|----------------------------|--|---------------------------|---------------------------------|



| CATEGORY | A | B | C | D |
|--------------------|---------------------------------|---------------------------------|-------------------------------|------------------------|
| S-ILS 8* | 795-1/2 | | 250 (300-1/2) | |
| S-ILS 8 | 902-5/8 | | 357 (400-5/8) | |
| S-LOC 8 | 1980-3/4 1435 (1500-3/4) | 1980-1 1435 (1500-1) | 1980-3 | 1435 (1500-3) |
| C CIRCLING | 1980-1 1/4 1435 (1500-1 1/4) | 1980-1 1/2 1435 (1500-1 1/2) | 1980-3 | 1435 (1500-3) |
| YURUN FIX MINIMUMS | | | | |
| S-LOC 8 | 1040-1/2 | 495 (500-1/2) | 1040-1 | 495 (500-1) |
| C CIRCLING | 1160-1 | 615 (700-1) | 1160-1 3/4 615 (700-1 3/4) | 1460-3 915 (1000-3) |

| | | | | | |
|-------------------|-----------|----------|------|------|------|
| ELEV 545 | D | TDZE 545 | | | |
| ANIER | ENE R-300 | △ | | | |
| 1150 | 5000 | hdg 264° | | | |
| GS 3.00° | TCH 44 | | | | |
| REIL Rwy 26 | | 0 | | | |
| HIRL Rwy 8-26 | | 0 | | | |
| FAF to MAP 7.9 NM | | | | | |
| Knots | 60 | 90 | 120 | 150 | 180 |
| Min:Sec | 7:54 | 5:16 | 3:57 | 3:10 | 2:38 |

NE-1, 31 OCT 2024 to 28 NOV 2024

NE-1, 31 OCT 2024 to 28 NOV 2024