

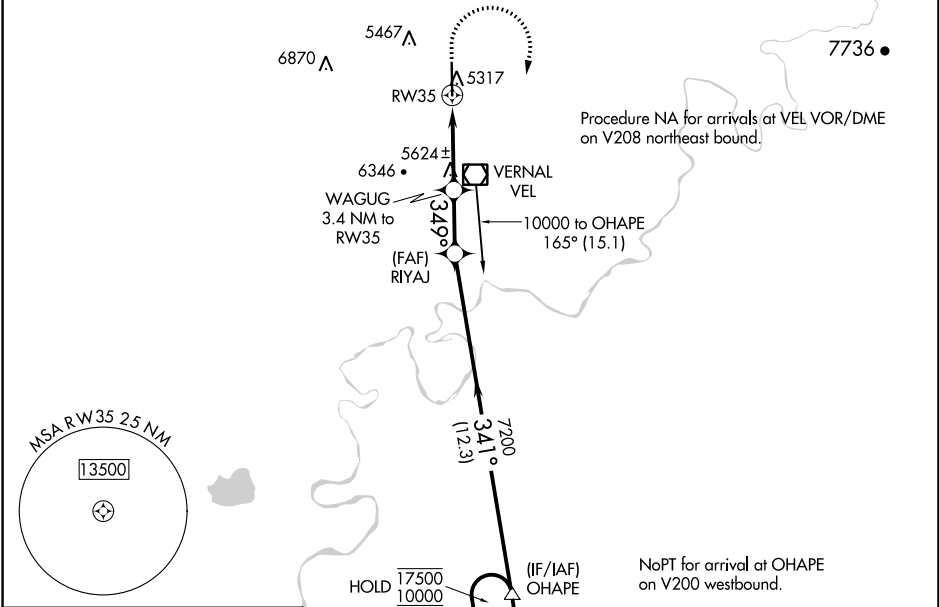
RNAV (GPS) Y RWY 35

VERNAL RGNL (VEL)

APP CRS	Rwy Idg	7000
349°	TDZE	5274
	Apt Elev	5274

RNP APCH.	MISSED APPROACH: Climb to 7000 then climbing right turn to 10000 direct OHAPE and hold. *Missed approach requires minimum climb of 300 feet per NM to 7500.
<p>⚠ Circling NA west of Rwy 17-35. Rwy 35 helicopter visibility reduction below ¾ NA.</p> <p>❄ -26°C</p>	

ASOS 118.125	SALT LAKE CENTER 119.95 377.15	UNICOM 122.7 (CTAF)
------------------------	--	-------------------------------

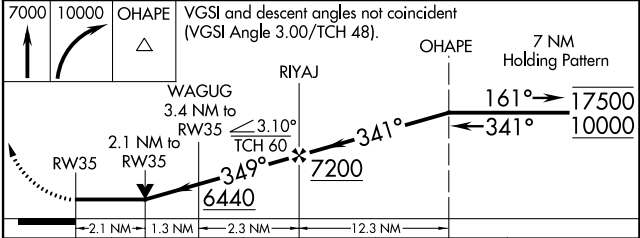
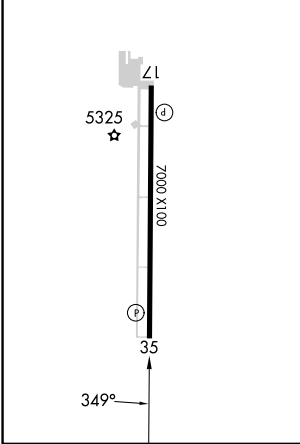


SW-4, 31 OCT 2024 to 28 NOV 2024

SW-4, 31 OCT 2024 to 28 NOV 2024

ELEV 5274	D	TDZE 5274
-----------	----------	-----------

REIL Rws 17 and 35
MIRL Rwy 17-35



CATEGORY	A	B	C	D
LNVA MDA*	5980-1	706 (800-1)	5980-2	706 (800-2)
LNVA MDA	6380-1¼ 1106 (1200-1¼)	6380-1½ 1106 (1200-1½)	6380-3	1106 (1200-3)
C CIRCLING	6380-1¼ 1106 (1200-1¼)	6380-1½ 1106 (1200-1½)	6380-3 1106 (1200-3)	6400-3 1126 (1200-3)

RNAV (GPS) Y RWY 35