

VOR/DME VEL <b>114.15</b> Chan <b>88</b> (Y)	APP CRS <b>329°</b>	Rwy Idg <b>7000</b> TDZE <b>5274</b> Apt Elev <b>5274</b>
--	------------------------	---

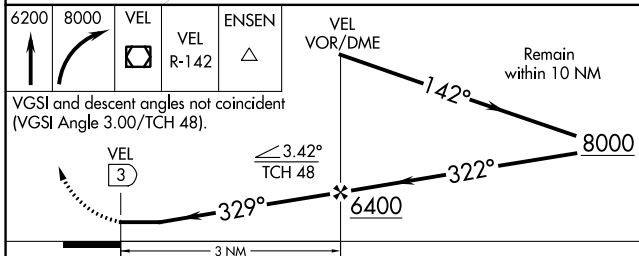
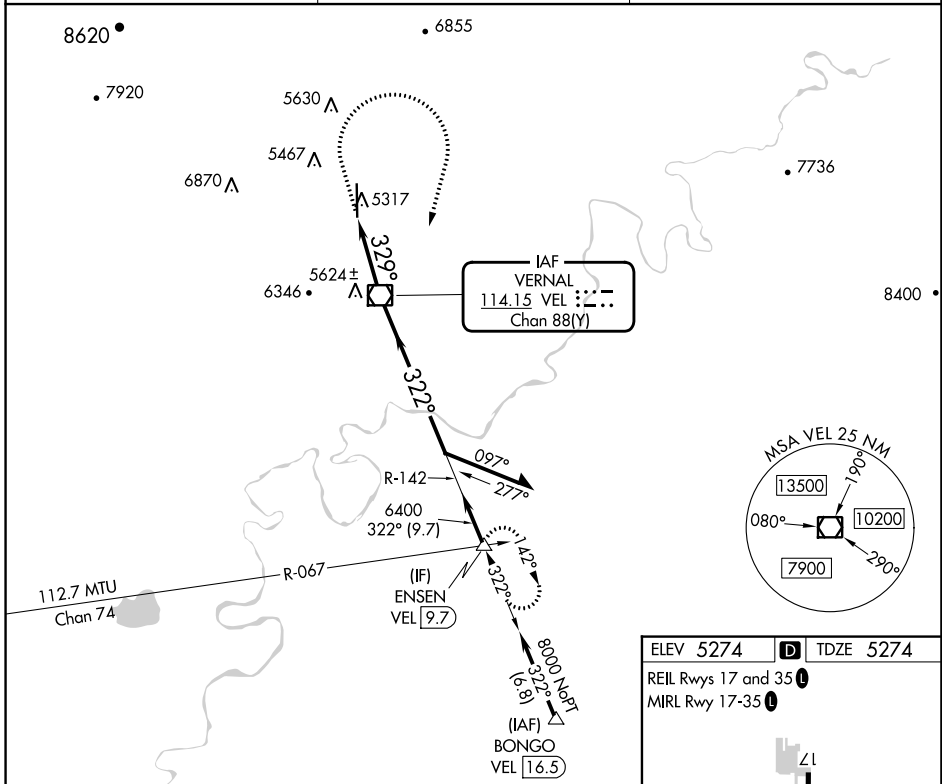
# VOR RWY 35

VERNAL RGNL (VEL)

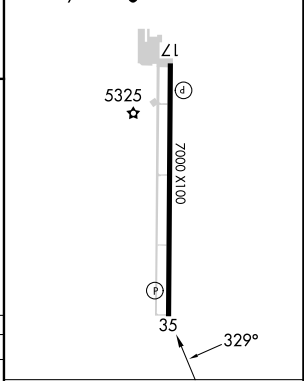
**⚠** Circling NA west of Rwy 17-35.  
**⚠** Rwy 35 helicopter visibility reduction below 3/4 NA.  
**❄** -26°C

MISSED APPROACH: Climb to 6200 then climbing right turn to 8000 direct VEL VOR/DME and on VEL VOR/DME R-142 to ENSEN INT/9.7 DME and hold.

ASOS <b>118.125</b>	SALT LAKE CENTER <b>119.95 377.15</b>	UNICOM <b>122.7</b> (CTAF) <b>📞</b>
------------------------	--	--



ELEV 5274 **D** TDZE 5274  
 REIL Rws 17 and 35 **📴**  
 MIRL Rwy 17-35 **📴**



CATEGORY	A	B	C	D
S-35	6160-1¼ 886 (900-1¼)		6160-2½ 886 (900-2½)	
<b>C</b> CIRCLING	6160-1¼ 886 (900-1¼)		6160-2¾ 886 (900-2¾)	6400-3 1126 (1200-3)

FAF to MAP 3 NM

Knots	60	90	120	150	180
Min:Sec	3:00	2:00	1:30	1:12	1:00

SW-4, 31 OCT 2024 to 28 NOV 2024

SW-4, 31 OCT 2024 to 28 NOV 2024