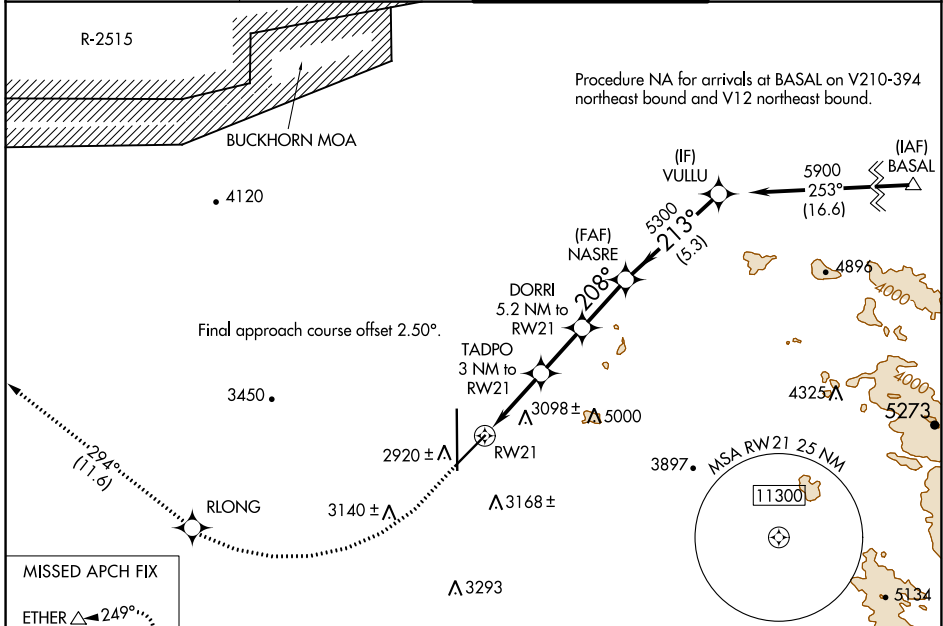


WAAS CH <b>82246</b> <b>W21A</b>	APP CRS <b>208°</b>	Rwy Idg TDZE Apt Elev	<b>9138</b> <b>2858</b> <b>2885</b>
--	------------------------	-----------------------------	---

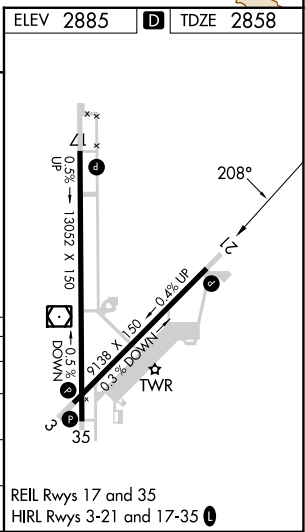
# RNAV (GPS) RWY 21

SOUTHERN CALIFORNIA LOGISTICS (V'CV)

RNP APCH - GPS.		MISSED APPROACH: Climb to 3500 then climbing right turn to 6000 direct RLONG and on track 294° to ETHER and hold.	
<p>⚠ Circling NA for C and D southeast of Rwsy 35 and 21. ⚠ For uncompensated Baro-VNAV systems, LNAV/VNAV NA below -20°C or above 54°C.</p>	ATIS ★ <b>135.475</b>	JOSHUA APP CON <b>124.55 363.0</b>	VICTORVILLE TOWER ★ <b>118.35 (CTAF) 282.225</b>
		GND CON <b>124.45</b>	



MISSED APCH FIX		ETHER ⚠ 249° 069° 7 NM			
3500	6000	RLONG	tr 294°	ETHER	VGSI and RNAV glidepath not coincident (VGSI Angle 3.00/TCH 85).
NASRE 5300 208° 4560 213° 5300 5900 213° 5300		VULLU 5900 213° 5300			
TADPO 3 NM to RW21 1.7 NM to RW21 3860 1.7 NM 1.3 NM 2.2 NM 2.3 NM 5.3 NM		DORRI 5.2 NM to RW21 5300 208° 4560 213° 5300 5900 213° 5300		GP 3.00° TCH 60	
CATEGORY	A	B	C	D	
LPV DA	3108-1		250 (300-1)		
LNAV/VNAV DA	3153-1		295 (300-1)		
LNAV MDA	3480-1	622 (600-1)	3480-1¾	622 (600-1¾)	
CIRCLING	3480-1	595 (600-1)	3480-1¾	3760-2¾	875 (900-2¾)



SW-3, 31 OCT 2024 to 28 NOV 2024

SW-3, 31 OCT 2024 to 28 NOV 2024