

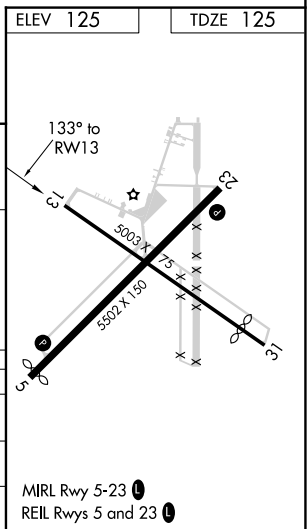
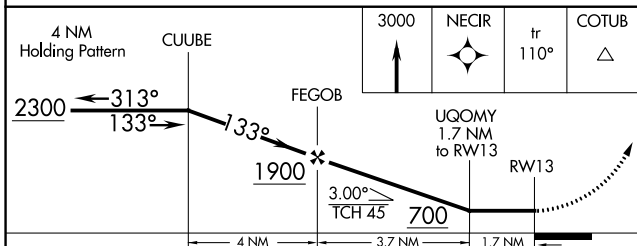
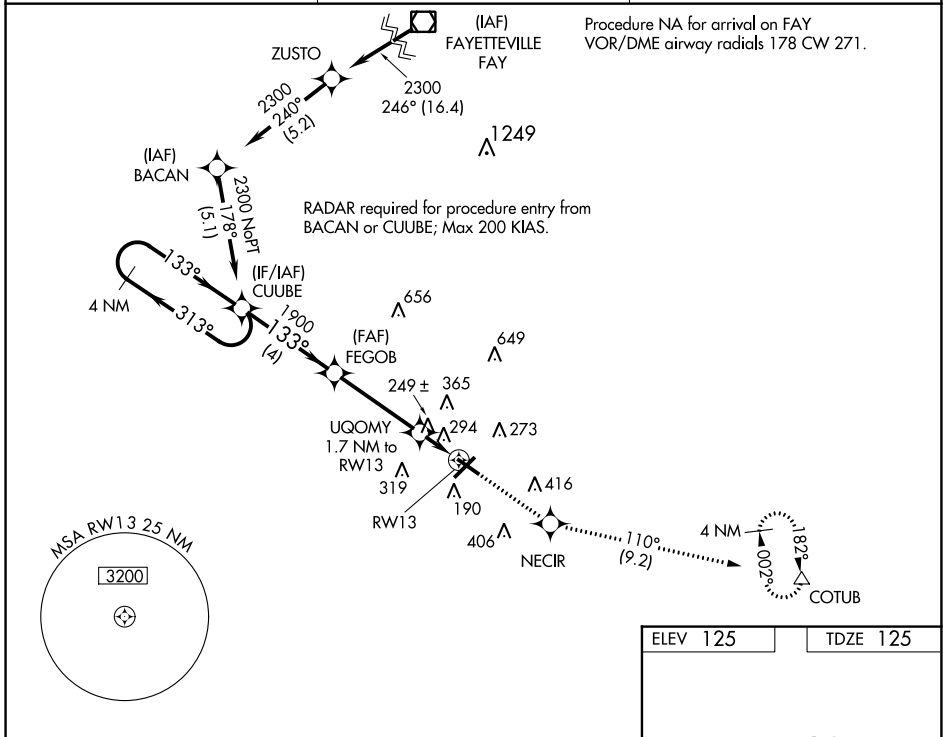
WAAS CH <b>61221</b> <b>W13A</b>	APP CRS <b>133°</b>	Rwy Idg TDZE <b>125</b> Apt Elev <b>125</b>	<b>5003</b>
--	------------------------	---	-------------

# RNAV (GPS) RWY 13

LUMBERTON RGNL (LBT)

RNP APCH-GPS.	MISSED APPROACH: Climb to 3000 direct NECIR and on track 110° to COTUB and hold.
<p>▼ Rwy 13 helicopter visibility reduction below 1 SM NA. When local altimeter setting not received, use Maxton altimeter setting; increase all MDAs 60 feet; increase LP Cat C and Circling Cat C visibility ¼ SM and LNAV Cat C ½ SM. Straight-in Rwy 13 NA at night, Circling Rwy 13, 31 NA at night.</p>	

ASOS <b>134.775</b>	FAYETTEVILLE APP CON <b>133.0 290.25</b>	UNICOM <b>122.8 (CTAF)</b>
------------------------	---	-------------------------------



CATEGORY	A	B	C	D
LP MDA	500-1 375 (400-1)			NA
LNAV MDA	600-1	475 (500-1)	600-1 $\frac{3}{8}$ 475 (500-1 $\frac{3}{8}$ )	NA
CIRCLING	660-1	535 (600-1)	720-1 $\frac{1}{2}$ 595 (600-1 $\frac{1}{2}$ )	NA

SE-2, 31 OCT 2024 to 28 NOV 2024

SE-2, 31 OCT 2024 to 28 NOV 2024