

WAAS CH 87007 W33A	APP CRS 326°	Rwy Idg TDZE 2193 Apt Elev 2193	5006
---------------------------------	------------------------	---	-------------

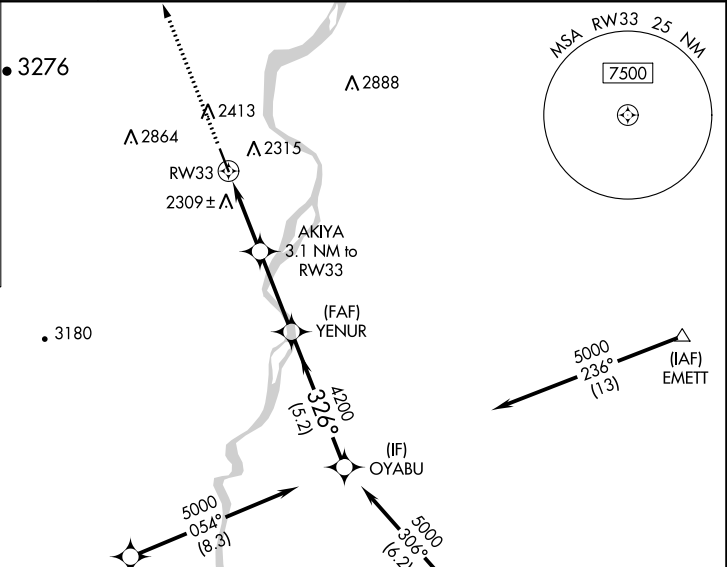
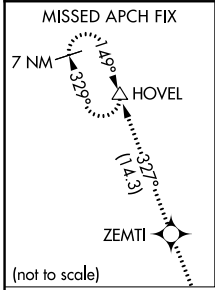
RNAV (GPS) RWY 33

ONTARIO MUNI (ONO)

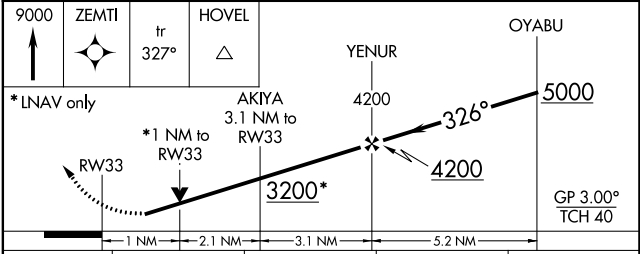
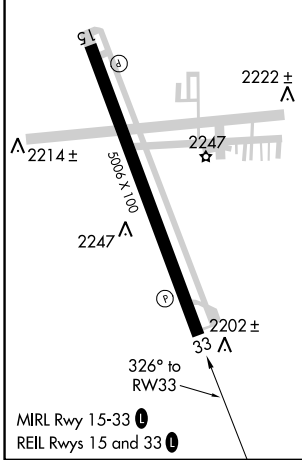
⚠ For uncompensated Baro-VNAV systems, LNAV/VNAV NA below -18°C (0°F) or above 54°C (130°F). DME/DME RNP -0.3 NA. Baro-VNAV and VDP NA when using Caldwell altimeter setting. When local altimeter setting not received, use Caldwell altimeter setting and increase all DA to 2541 feet and increase LPV and LNAV/VNAV visibility ¾ SM all Cats; increase all MDA 100 feet and increase LNAV Cat C and D ¾ SM and Circling Cat C visibility ¼ SM. Circling Rwy 15 NA at night. Rwy 33 helicopter visibility reduction below ¾ SM NA.

MISSED APPROACH: Climb to 9000 direct ZEMTI and on track 327° to HOVEL and hold, continue climb-in-hold 9000.

ASOS 135.275	SALT LAKE CENTER 128.05 306.95	UNICOM 122.8 (CTAF) 0
------------------------	--	---------------------------------



ELEV 2193	TDZE 2193
-----------	-----------



CATEGORY	A	B	C	D
LPV DA		2443-7/8	250 (300-7/8)	
LNAV/VNAV DA		2443-7/8	250 (300-7/8)	
LNAV MDA		2560-1	367 (400-1)	
C CIRCLING	2760-1 567 (600-1)	2800-1 607 (700-1)	3120-2¾ 927 (1000-2¾)	3240-3 1047 (1100-3)

NW-1, 31 OCT 2024 to 28 NOV 2024

NW-1, 31 OCT 2024 to 28 NOV 2024