

PARIS, TEXAS

AL-803 (FAA)

23054

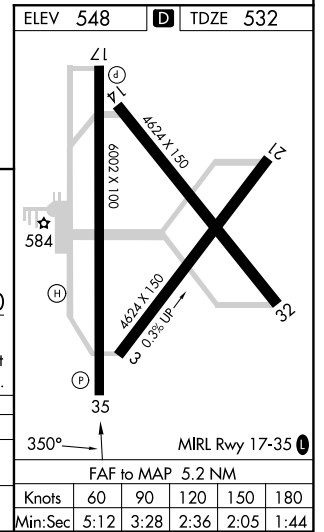
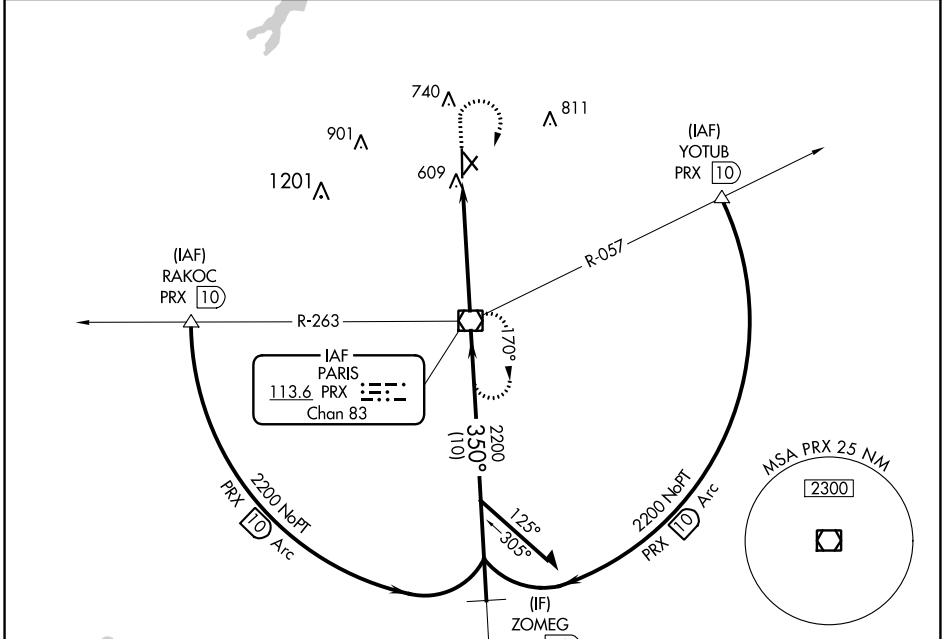
VOR/DME PRX <b>113.6</b> Chan <b>83</b>	APP CRS <b>350°</b>	Rwy Idg TDZE Apt Elev	<b>6002</b> <b>532</b> <b>548</b>
---	------------------------	-----------------------------	---

# VOR RWY 35

COX FLD (PRX)

**▼** Rwy 35 helicopter visibility reduction below 3/4 SM NA.  
**▲** MISSED APPROACH: Climb to 2000 then climbing right turn to 2300 direct PRX VOR/DME and hold.

AWOS-3PT <b>119.675</b>	FORT WORTH CENTER <b>124.875</b>	UNICOM <b>122.975 (CTAF)</b> <b>0</b>
----------------------------	-------------------------------------	--



2000	2300	PRX
↑	↷	☐
PRX 5.2	PRX 3.9	PRX VOR/DME
1.2	3.9 NM	Remain within 10 NM
350°	170°	2200
2.96° TCH 53	350°	2200
VGSIs and descent angles not coincident (VGSi Angle 3.00/TCH 40).		

CATEGORY	A	B	C	D
S-35	960-1	428 (500-1)	960-1 1/4	428 (500-1 1/4)
CIRCLING	1060-1	512 (600-1)	1100-1 1/2	1220-2 1/4
			552 (600-1 1/2)	672 (700-2 1/4)

ELEV 548	TDZE 532
4624 x 150	4624 x 150
6002 x 100	0.3% UP
584	35
350°	MIRL Rwy 17-35
FAF to MAP 5.2 NM	
Knots	60 90 120 150 180
Min:Sec	5:12 3:28 2:36 2:05 1:44

PARIS, TEXAS  
Amdt 2C 23FEB23

33°38'N-95°27'W

# COX FLD (PRX) VOR RWY 35

SC-2, 31 OCT 2024 to 28 NOV 2024

SC-2, 31 OCT 2024 to 28 NOV 2024