

# RNAV (GPS) RWY 10

LAKE CITY GATEWAY (LCQ)

APP CRS	Rwy Idg	<b>8003</b>
<b>100°</b>	TDZE	<b>201</b>
	Apt Elev	<b>201</b>

RNP APCH-GPS.

▼ When local altimeter setting not received, use Gainesville altimeter setting: Increase all MDAs 100 feet; increase LNAV Cat C/D visibility 3/8 SM and Circling Cat C visibility 1/2 SM and Cat D 1/4 SM. Procedure NA at night. Rwy 10 helicopter visibility reduction below 1 SM NA.

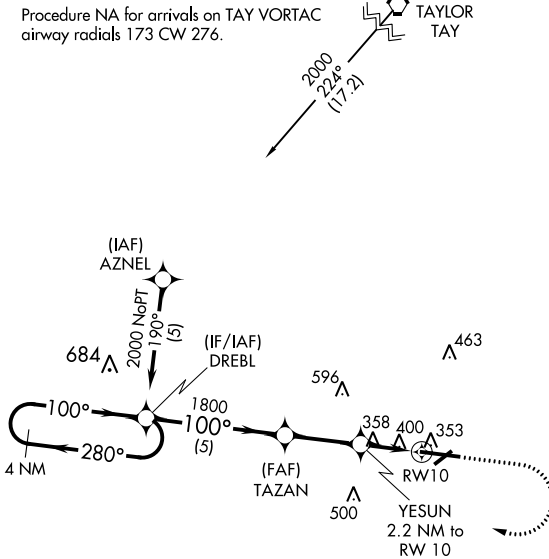
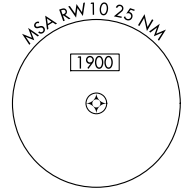
▲

MISSED APPROACH: Climb to 800 then climbing right turn to 2000 direct DREBL and hold.

AWOS-3 <b>120,675</b>	JACKSONVILLE CENTER <b>125,375 254,325</b>	LAKE CITY TOWER ★ <b>119.2 (CTAF) 0 314.6</b>	GND CON <b>121.9</b>	UNICOM <b>122.95</b>
--------------------------	-----------------------------------------------	--------------------------------------------------	-------------------------	-------------------------

Procedure NA for arrivals on TAY VORTAC  
airway radials 173 CW 276.

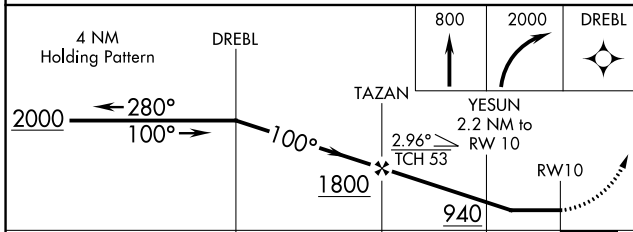
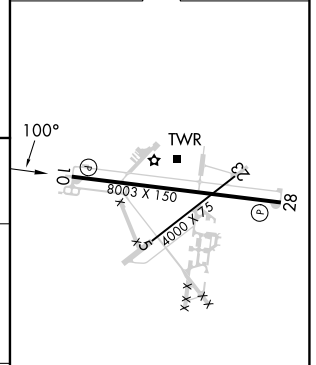
TAYLOR  
TAY



SE-3, 31 OCT 2024 to 28 NOV 2024

SE-3, 31 OCT 2024 to 28 NOV 2024

ELEV 201	TDZE 201
----------	----------



CATEGORY	A	B	C	D
LNAV MDA	700-1	499 (500-1)	700-1 3/8	499 (500-1 3/8)
CIRCLING	760-1	559 (600-1)	780-1 1/2 579 (600-1 1/2)	960-2 1/2 759 (800-2 1/2)

REIL Rwy 10 and 28 0  
MIRL Rwy 5-23 and 10-28 0