

LOC/DME I-AND <b>111.9</b> Chan <b>56</b>	APP CRS <b>051°</b>	Rwy Idg <b>6002</b> TDZE <b>759</b> Apt Elev <b>782</b>
---	------------------------	---

# ILS or LOC RWY 5

ANDERSON RGNL (A·ND)

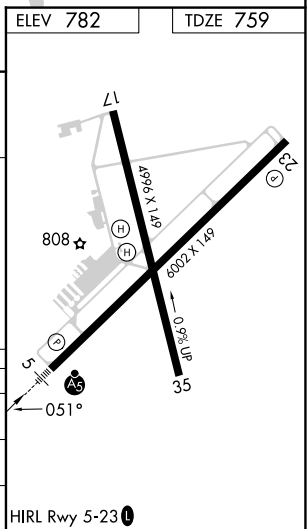
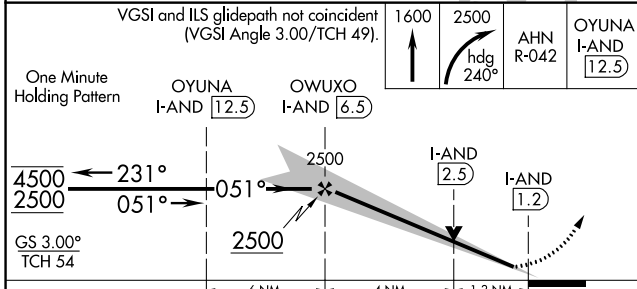
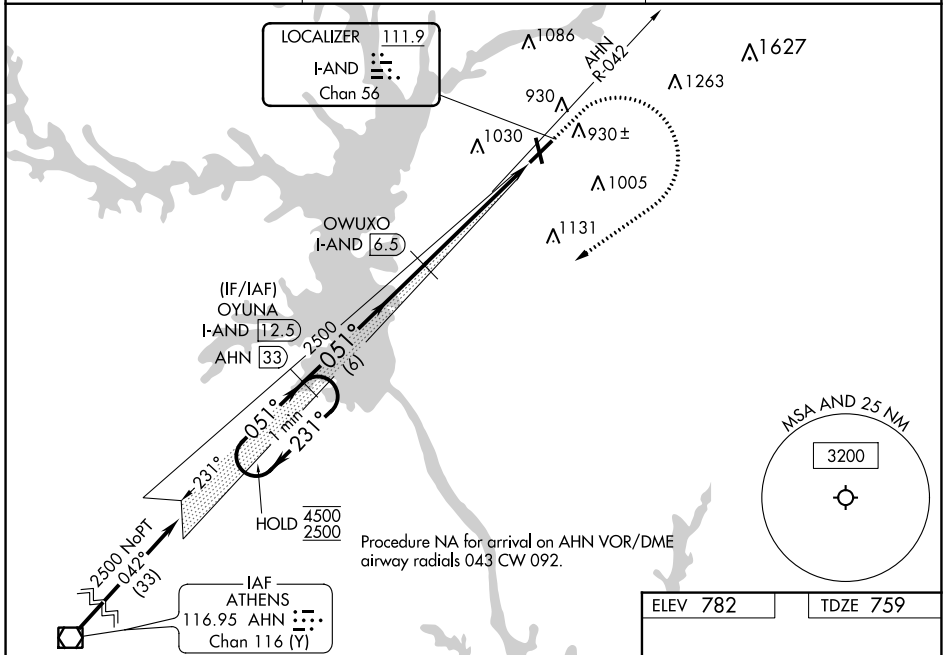
DME required.

⚠ When local altimeter setting not received, use Clemson altimeter setting and increase S-ILS 05 DA to 1006 feet; increase all MDAs 60 feet and Circling visibility Cat C/D ¼ SM. VDP NA when using Clemson altimeter setting. Circling Rwy 17, 35 NA at night. For inop ALS increase S-LOC 05 visibility Cat C/D to 1⅓ SM.

MALSR

MISSED APPROACH: Climb to 1600 then climbing right turn to 2500 on heading 240° and on AHN VOR/DME R-042 to OYUNA/I-AND 12.5 DME and hold.

ASOS <b>120.675</b>	GREER APP CON★ <b>118.8 270.275</b>	CTAF <b>123.60</b>
------------------------	--	-----------------------



CATEGORY	A	B	C	D
S-ILS 5	959-½ 200 (200-½)			
S-LOC 5	1220-½	461 (500-½)	1220-1	461 (500-1)
CIRCLING	1260-1 478 (500-1)	1320-1 538 (600-1)	1440-1¾ 658 (700-1¾)	1500-2¼ 718 (800-2¼)

SE-2, 31 OCT 2024 to 28 NOV 2024

SE-2, 31 OCT 2024 to 28 NOV 2024