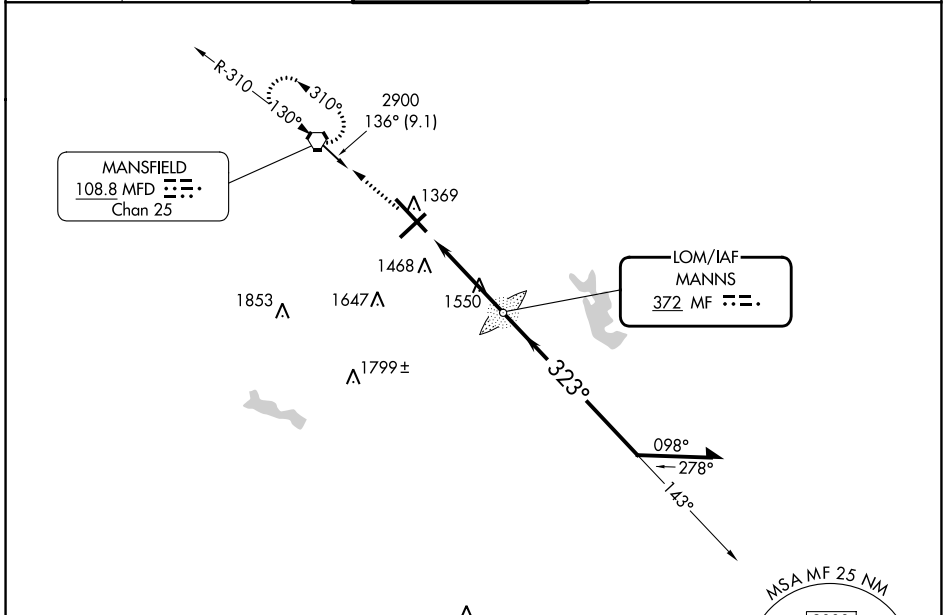


LOM MF <b>372</b>	APP CRS <b>323°</b>	Rwy ldg TDZE Apt Elev	<b>9001</b> <b>1293</b> <b>1297</b>
----------------------	------------------------	-----------------------------	---

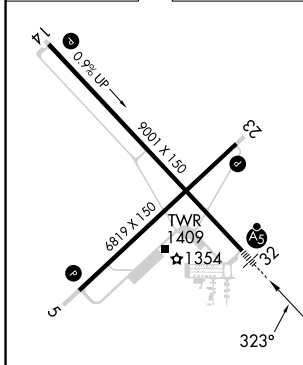
**NDB RWY 32**  
MANSFIELD LAHM RGNL (MFD)

RADAR required for procedure entry.		MALSR 	MISSED APPROACH: Climb to 2900 direct MFD VORTAC and hold.
 For inoperative ALS increase Cats A/B visibility to RVR 5500 and Cats C/D visibility to 1 3/4 SM.			

ATIS <b>125.3</b>	CLEVELAND APP CON ★ <b>128.35 360.65</b>	MANSFIELD TOWER ★ <b>119.8 (CTAF) 291.775</b>	GND CON <b>121.8 291.775</b>	UNICOM <b>122.95</b>
----------------------	---	--	---------------------------------	-------------------------



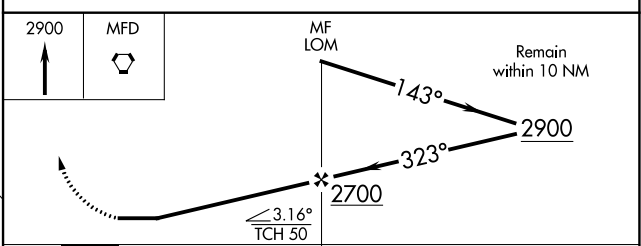
ELEV 1297	<b>D</b>	TDZE 1293
-----------	----------	-----------



HIRL Rwy 5-23 and 14-32  
REIL Rwy 5 and 23

FAF to MAP 4 NM

Knots	60	90	120	150	180
Min:Sec	4:00	2:40	2:00	1:36	1:20



CATEGORY	A	B	C	D
S-32	1900/40	607 (700-3/4)	1900-1 3/8	607 (700-1 1/8)
<input checked="" type="checkbox"/> CIRCLING	1900-1	603 (700-1)	2000-2 703 (800-2)	2000-2 1/4 703 (800-2 1/4)

EC-2, 31 OCT 2024 to 28 NOV 2024

EC-2, 31 OCT 2024 to 28 NOV 2024