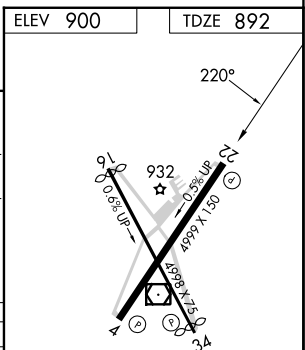
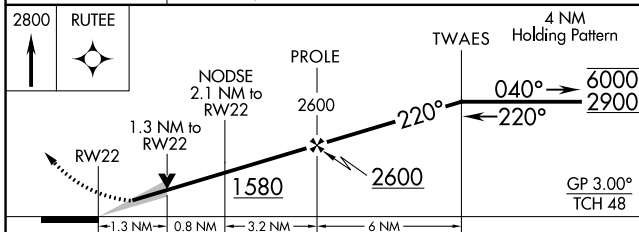
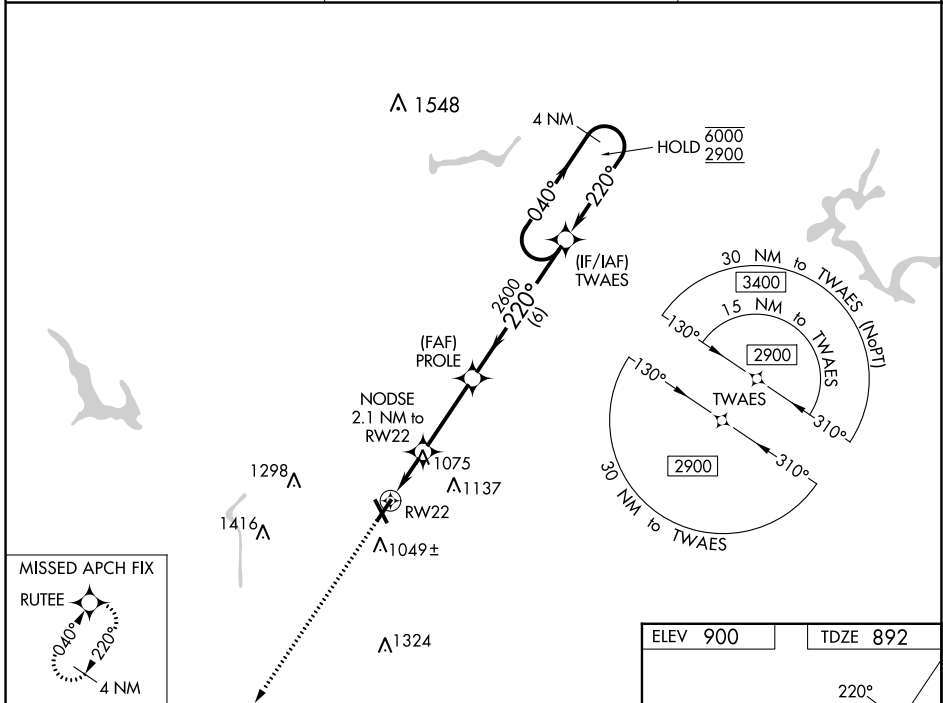


WAAS CH <b>78039</b> <b>W22A</b>	APP CRS <b>220°</b>	Rwy Idg <b>4999</b> TDZE <b>892</b> Apt Elev <b>900</b>
--	------------------------	---

# RNAV (GPS) RWY 22

ZANESVILLE MUNI (ZZV)

RNP APCH - GPS.		MISSED APPROACH: Climb to 2800 direct RUTEE and hold.
ASOS <b>114.95</b>	INDIANAPOLIS CENTER <b>124.45 323.275</b>	UNICOM <b>123.0 (CTAF) 0*</b>



CATEGORY	A	B	C	D
LPV DA		1092- <sup>3</sup> / <sub>4</sub>	200 (200- <sup>3</sup> / <sub>4</sub> )	
LNAV/VNAV DA		1297-1 <sup>1</sup> / <sub>8</sub>	405 (400-1 <sup>1</sup> / <sub>8</sub> )	
LNAV MDA	1340-1	448 (500-1)	1340-1 <sup>3</sup> / <sub>8</sub>	448 (500-1 <sup>3</sup> / <sub>8</sub> )
CIRCLING	1380-1 480 (500-1)	1420-1 520 (600-1)	1560-1 <sup>3</sup> / <sub>4</sub> 660 (700-1 <sup>3</sup> / <sub>4</sub> )	1620-2 <sup>1</sup> / <sub>4</sub> 720 (800-2 <sup>1</sup> / <sub>4</sub> )

ELEV 900 TDZE 892

HIRL Rwy 4-22 0\*  
MIRL Rwy 16-34  
REIL Rwy 4, 16, 22 and 34 0\*

EC-2, 31 OCT 2024 to 28 NOV 2024

EC-2, 31 OCT 2024 to 28 NOV 2024