

| | | |
|---|------------------------|---|
| LOC/DME I-TYN 110.9 Chan 46 | APP CRS 036° | Rwy Idg 8000 TDZE 40 Apt Elev 42 |
|---|------------------------|---|

ILS or LOC RWY 4R

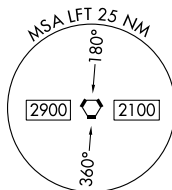
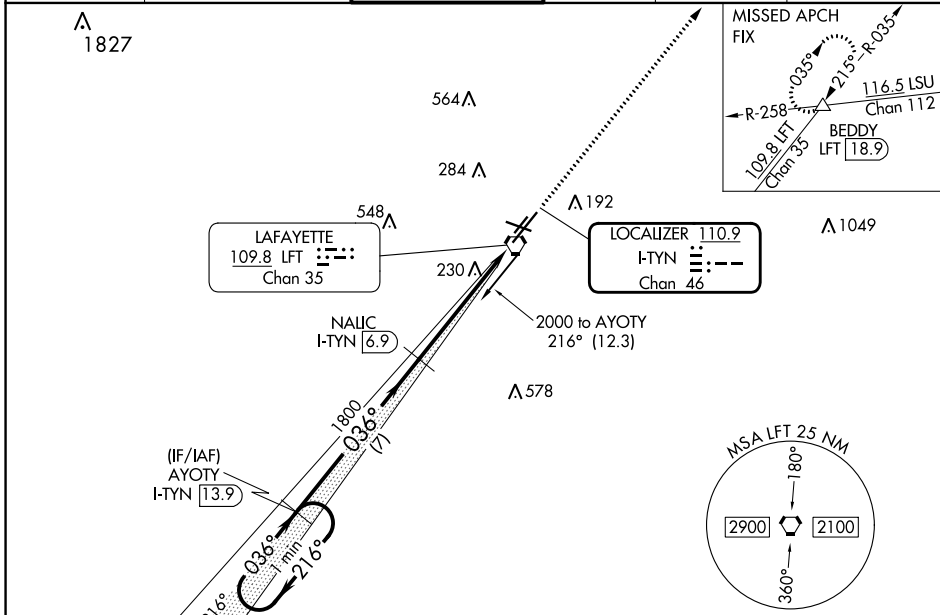
LAFAYETTE RGNL/PAUL FOURNET FLD (LFT)

DME required for procedure entry and for LOC only.

⚠ Rwy 4R helicopter visibility reduction below ¼ SM NA. VDP NA when using Acadiana Rgnl altimeter setting. When local altimeter setting not received, use Acadiana Rgnl altimeter setting and increase all DA 29 feet and all MDA 40 feet, increase S-ILS 4R and S-LOC 4R visibility all Cats ½ SM, Circling visibility Cat C/D ¼ SM.

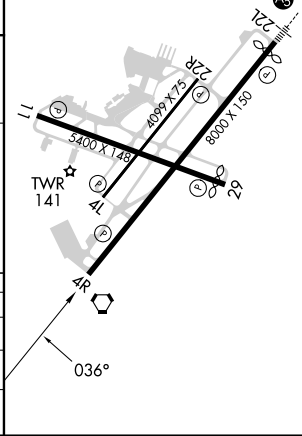
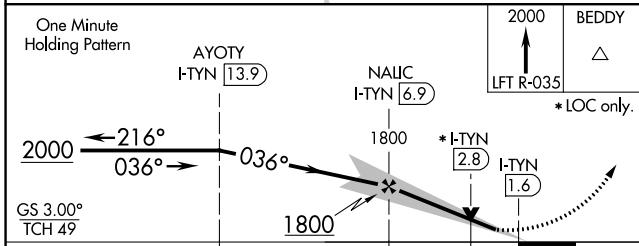
MISSED APPROACH: Climb to 2000 on LFT R-035 to BEDDY INT/LFT 18.9 DME and hold.

| | | | | | |
|-----------------------|---|--|-------------------------|---------------------------|-------------------------|
| ATIS 134.05 | LAFAYETTE APP CON * 121.1 363.0 | LAFAYETTE TOWER * 118.5 (CTAF) 0 257.8 | GND CON 121.8 | CLNC DEL 125.55 | UNICOM 122.95 |
|-----------------------|---|--|-------------------------|---------------------------|-------------------------|



| | |
|----------------|-------------------------|
| ELEV 42 | D TDZE 40 |
|----------------|-------------------------|

REIL Rwy 4L, 4R, 11, 22R and 29
MIRL Rwy 4L-22R and 11-29
HIRL Rwy 4R-22L



| CATEGORY | A | B | C | D |
|-------------------|-----------------------|-------------------|-------------------------|-------------------|
| S-ILS 4R | 316-7/8 276 (300-7/8) | | | |
| S-LOC 4R | 500-1 460 (500-1) | | 500-13/8 460 (500-13/8) | |
| C CIRCLING | 540-1 498 (500-1) | 580-1 538 (600-1) | 700-13/4 658 (700-13/4) | 700-2 658 (700-2) |

SC-4, 31 OCT 2024 to 28 NOV 2024

SC-4, 31 OCT 2024 to 28 NOV 2024