

LOC I-FLK 111.3	APP CRS 073°	Rwy Idg 5400
		TDZE 287
		Apt Elev 296

ILS or LOC RWY 7

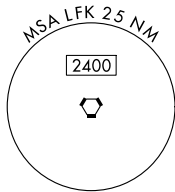
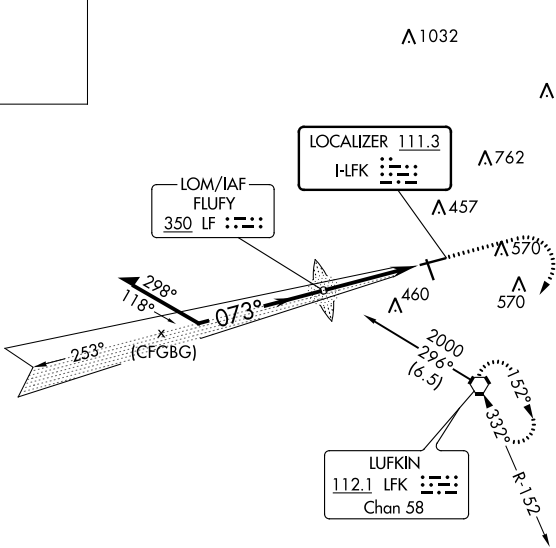
ANGELINA COUNTY (LFLK)

<p>▼ ▲ NA</p> <p>Circling Rwy 16, 25 NA at night.</p>	<p>MALSR</p>	<p>MISSED APPROACH: Climb to 800 then climbing right turn to 2000 direct LFK VORTAC and hold, continue climb-in-hold.</p>
---	--------------	---

ASOS 120.625	HOUSTON CENTER 125.175 285.575	UNICOM 123.0 (CTAF) 0
------------------------	--	--

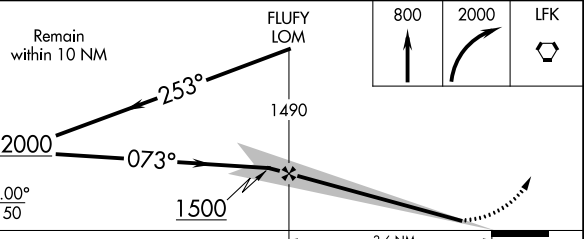
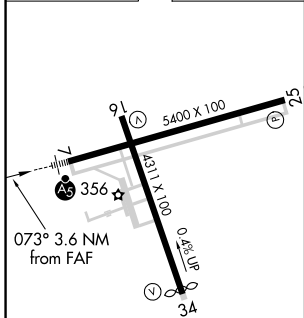
ALTERNATE MISSED APCH

FLUFY
350 LF : :: ::



Procedure NA for arrival on LFK VORTAC airway radials 245 CW 354.

ELEV 296	TDZE 287
----------	----------



GS 3.00° TCH 50	3.6 NM			
CATEGORY	A	B	C	D
S-ILS 7	537-1/2		250 (300-1/2)	
S-LOC 7	680-1/2	393 (400-1/2)	680-5/8	393 (400-5/8)
<input checked="" type="checkbox"/> CIRCLING	740-1 444 (500-1)	760-1 464 (500-1)	880-1 1/2 584 (600-1 1/2)	1140-2 3/4 844 (900-2 3/4)

MIRL Rws 7-25 and 16-34 **0**

FAF to MAP 3.6 NM

Knots	60	90	120	150	180
Min:Sec	3:36	2:24	1:48	1:26	1:12

SC-5, 31 OCT 2024 to 28 NOV 2024

SC-5, 31 OCT 2024 to 28 NOV 2024