

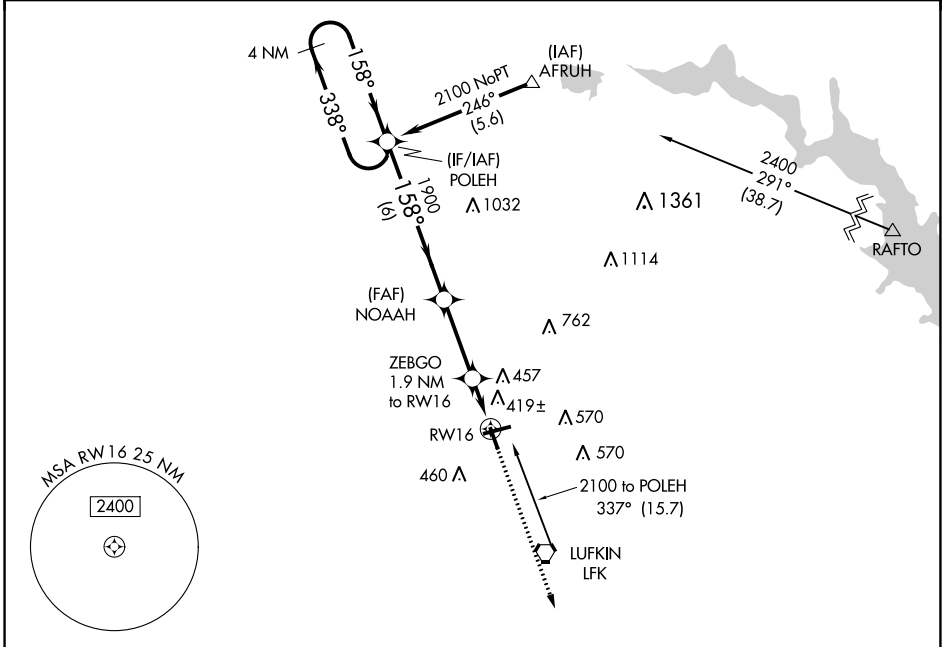
APP CRS 158°	Rwy Idg TDZE Apt Elev	4311 289 296
------------------------	-----------------------------	---

RNAV (GPS) RWY 16

ANGELINA COUNTY (L'FK)

<p>▼ DME/DME RNP-0.3 NA. ▲ Straight in Rwy 16 NA at night, Circling Rwy 16, 25 NA at night. Rwy 16 helicopter visibility reduction below 1 SM NA.</p>	MISSED APPROACH: Climb to 2000 direct EXISE and hold.
---	---

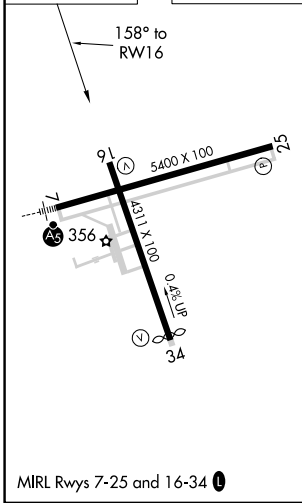
ASOS 120.625	HOUSTON CENTER 125.175 285.575	UNICOM 123.0 (CTAF) 0
------------------------	--	---------------------------------



SC-5, 31 OCT 2024 to 28 NOV 2024

SC-5, 31 OCT 2024 to 28 NOV 2024

ELEV 296	TDZE 289
----------	----------



4 NM Holding Pattern	POLEH	NOAAH	ZEBGO 1.9 NM to RW16	RW16
2100	1900	940		
338°	158°	337°		
6 NM	3 NM	1.9 NM		
CATEGORY	A	B	C	D
LNAV MDA	680-1	391 (400-1)	680-1½	391 (400-1½)
C CIRCLING	740-1 444 (500-1)	760-1 464 (500-1)	880-1½ 584 (600-1½)	1140-2¾ 844 (900-2¾)