

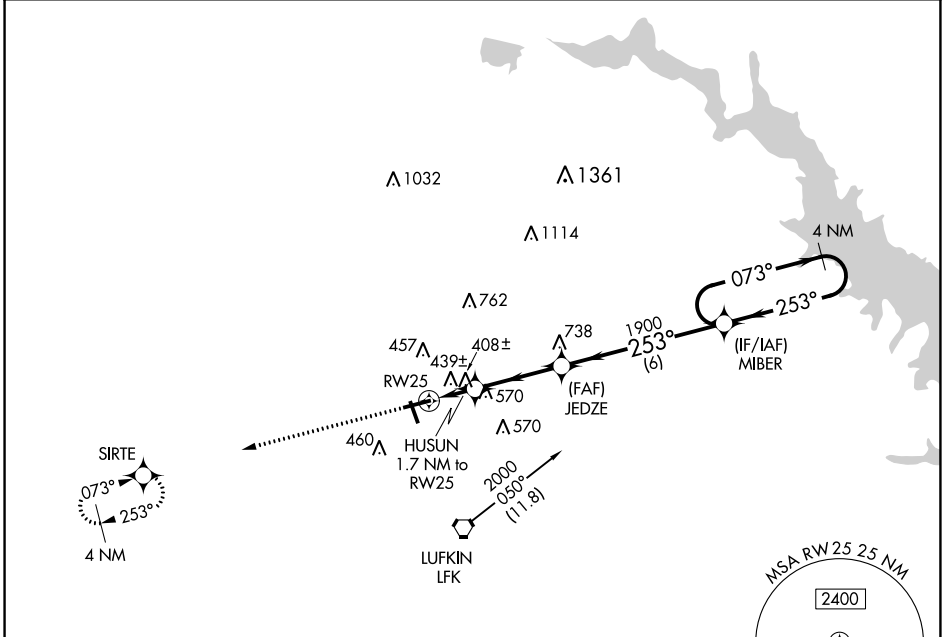
WAAS CH 72641 W25A	APP CRS 253°	Rwy Idg TDZE Apt Elev	5400 296 296
--	------------------------	-----------------------------	---

RNAV (GPS) RWY 25

ANGELINA COUNTY (L'FK)

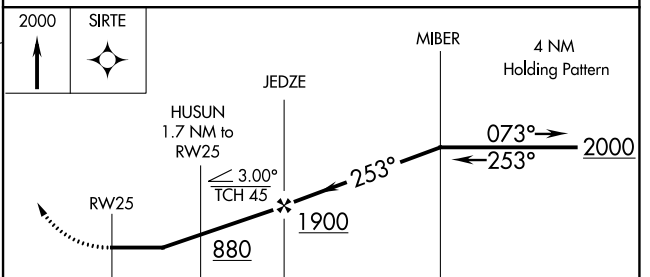
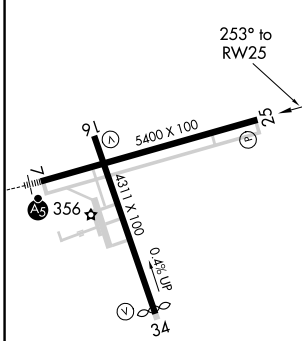
V **A** **W** DME/DME RNP-0.3 NA. Straight-in Rwy 25 NA at night, Circling Rwy 16, 25 NA at night. Rwy 25 helicopter visibility reduction below 1 SM NA. MISSED APPROACH: Climb to 2000 direct SIRTE and hold.

ASOS 120.625	HOUSTON CENTER 125.175 285.575	UNICOM 123.0 (CTAF) 0
------------------------	--	--



Procedure NA for arrivals on LFK VORTAC airway radials 354 CW 082.

ELEV 296	TDZE 296
----------	----------



CATEGORY	A	B	C	D
LP MDA	660-1		364 (400-1)	
LNVA MDA	700-1	404 (500-1)	700-1½	404 (500-1½)
C CIRCLING	740-1 444 (500-1)	760-1 464 (500-1)	880-1½ 584 (600-1½)	1140-2¾ 844 (900-2¾)

SC-5, 31 OCT 2024 to 28 NOV 2024

SC-5, 31 OCT 2024 to 28 NOV 2024