

VORTAC LFK <b>112.1</b> Chan <b>58</b>	APP CRS <b>332°</b>	Rwy Idg TDZE <b>286</b> Apt Elev <b>296</b>
--	------------------------	---

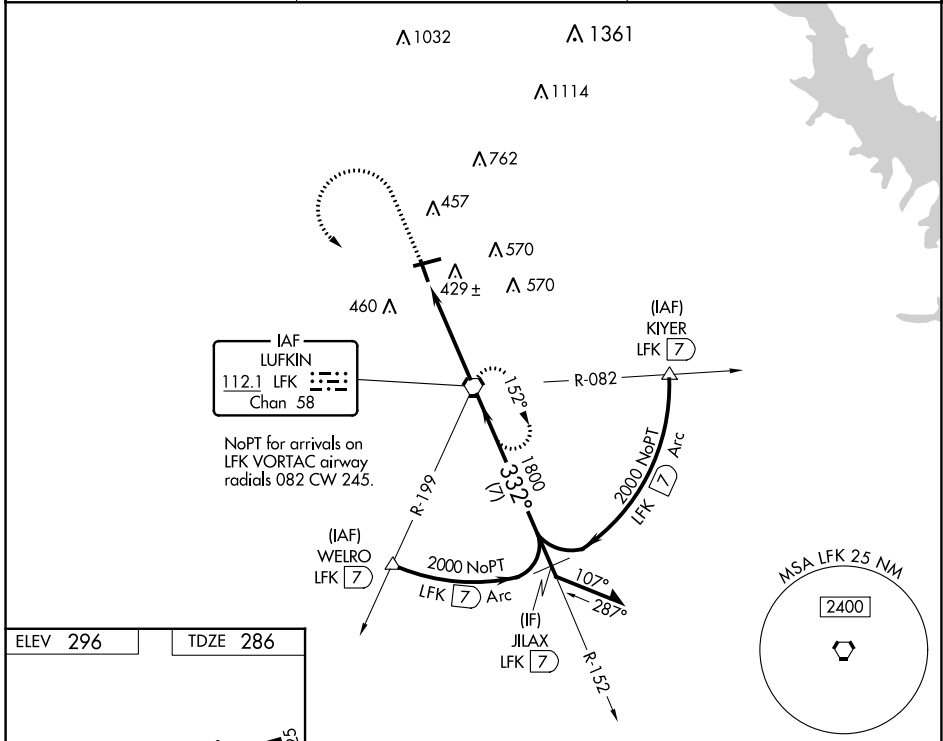
# VOR RWY 34

ANGELINA COUNTY (L<sup>F</sup>K)

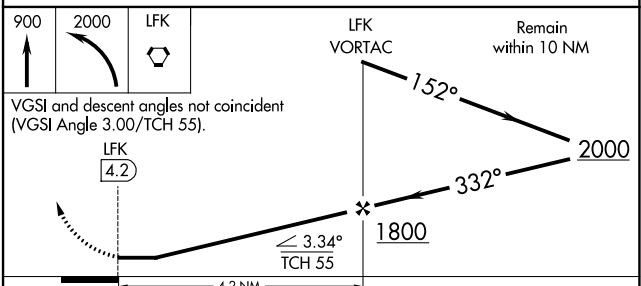
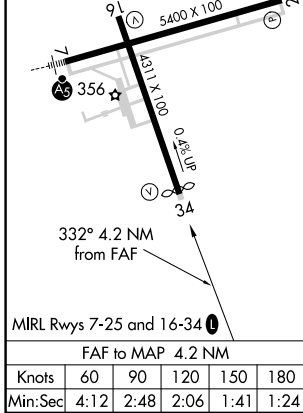
**▼** Rwy 34 helicopter visibility reduction below 1 SM NA.  
**▲** Straight-In Rwy 34 NA at night, Circling to Rwy 16, 25, 34 NA at night.

MISSED APPROACH: Climb to 900 then descending left turn to 2000 direct LFK VORTAC and hold.

ASOS <b>120.625</b>	HOUSTON CENTER <b>125.175 285.575</b>	UNICOM <b>123.0</b> (CTAF) <b>0</b>
------------------------	--	--



ELEV 296	TDZE 286
----------	----------



CATEGORY	A	B	C	D
S-34	680-1	394 (400-1)	680-1½	394 (400-1½)
<b>☑</b> CIRCLING	740-1 444 (500-1)	760-1 464 (500-1)	880-1½ 584 (600-1½)	1140-2¾ 844 (900-2¾)

SC-5, 31 OCT 2024 to 28 NOV 2024

SC-5, 31 OCT 2024 to 28 NOV 2024