

WAAS CH 53302 W04A	APP CRS 042°	Rwy Idg 5997 TDZE 3374 Apt Elev 3374
--	------------------------	---

RNAV (GPS) RWY 4

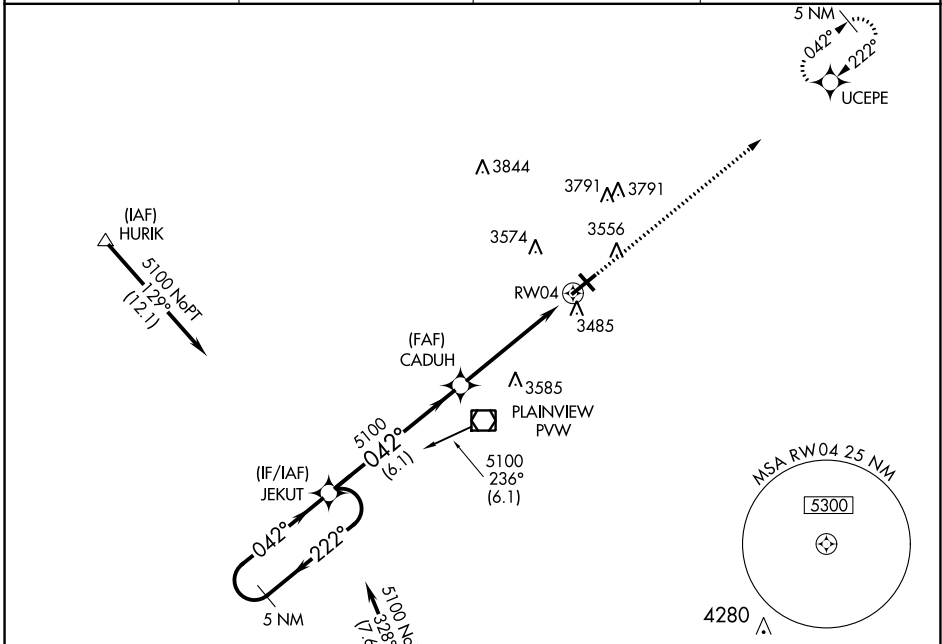
HALE COUNTY (PVW)

RNP APCH.

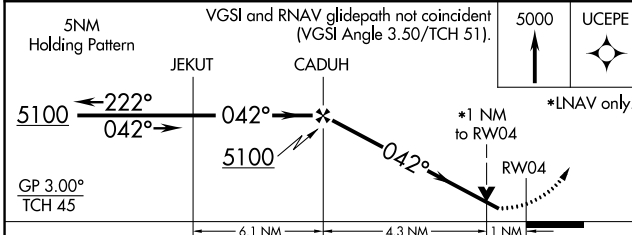
▼ For uncompensated Baro-VNAV systems, LNAV/VNAV NA below -21°C or above 42°C. VDP and Baro-VNAV NA when using Lubbock altimeter setting. Rwy 4 helicopter visibility reduction below ¼ SM NA. When local altimeter setting not received, use Lubbock altimeter setting; increase all DA 83 feet and increase all LPV and LNAV/VNAV visibility ½ SM, increase all MDA 100 feet and LNAV Cat C/D visibility ¼ SM and Circling Cat C/D visibility ½ SM.

▲ MISSED APPROACH: Climb to 5000, direct UCEPE and hold.

AWOS-3 119.675	LUBBOCK APP CON 119.2 351.8	CLNC DEL 118.4	UNICOM 123.0 (CTAF) 0
--------------------------	---------------------------------------	--------------------------	---------------------------------

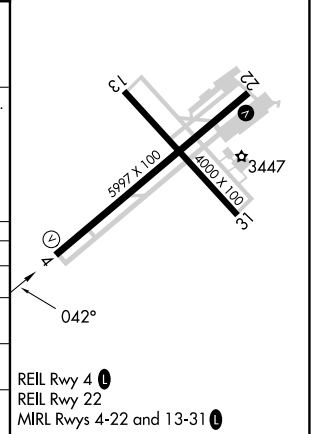


5NM Holding Pattern	VGSI and RNAV glidepath not coincident (VGSI Angle 3.50/TCH 51).	5000 UCEPE
---------------------	--	------------



CATEGORY	A	B	C	D
LPV DA	3624-1 250 (300-1)			
LNAV/VNAV DA	3730-1¼ 356 (400-1¼)			
LNAV MDA	3800-1 426 (500-1)	3800-1¼ 426 (500-1¼)		
CIRCLING	3940-1¼ 566 (600-1¼)	4160-2¼ 786 (800-2¼)	4160-2½ 786 (800-2½)	

ELEV 3374	TDZE 3374
-----------	-----------



SC-2, 31 OCT 2024 to 28 NOV 2024

SC-2, 31 OCT 2024 to 28 NOV 2024