

VOR/DME PVW <b>112.9</b> Chan <b>76</b>	APP CRS <b>024°</b>	Rwy Idg <b>5997</b> TDZE <b>3374</b> Apt Elev <b>3374</b>
---	------------------------	---

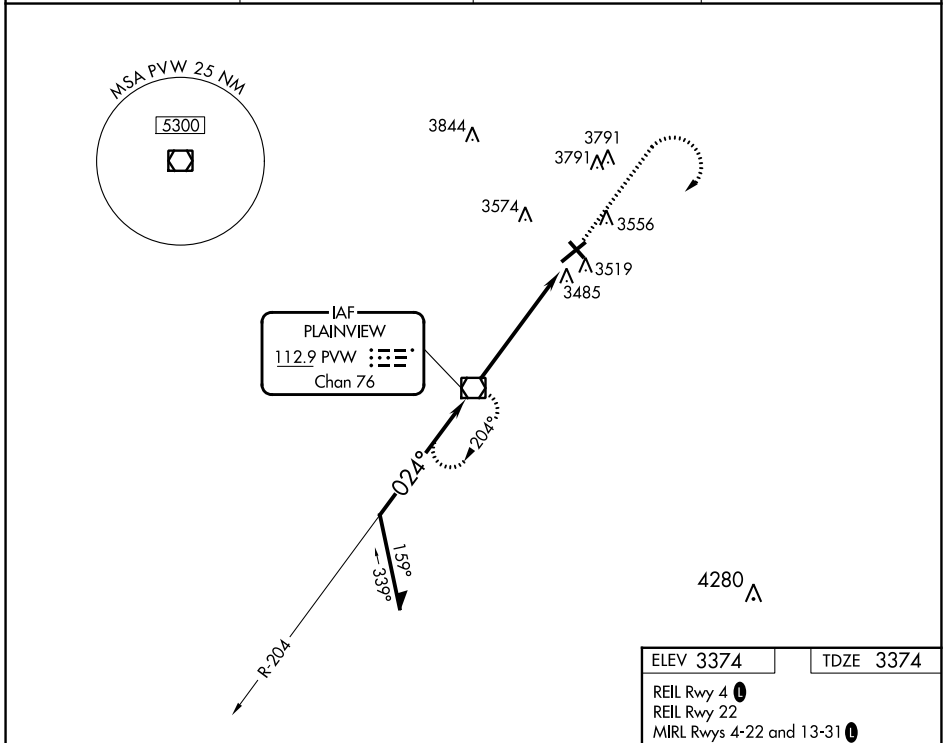
# VOR RWY 4

HALE COUNTY (PVW)

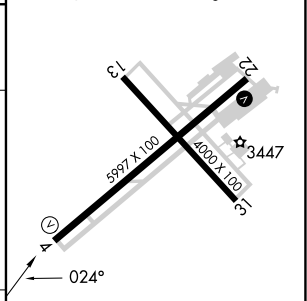
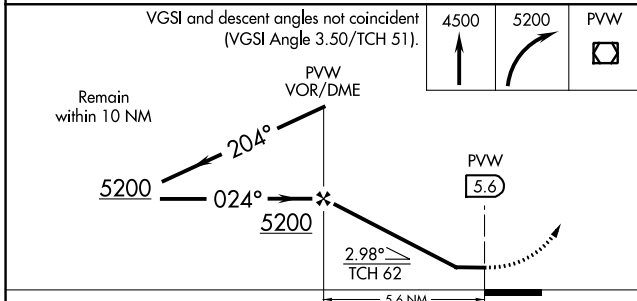
**NA** When local altimeter setting not received, use Lubbock altimeter setting and increase all MDA 100 feet, increase S-4 visibility Cat C/D to 1½ SM, Circling Cat C visibility to 2¾ SM, and Circling Cat D visibility to 3 SM. Helicopter visibility reduction below ¾ mile NA.

MISSED APPROACH: Climb to 4500, then climbing right turn to 5200 direct PVW VOR/DME and hold.

AWOS-3 <b>119.675</b>	LUBBOCK APP CON <b>119.2 351.8</b>	CLNC DEL <b>118.4</b>	UNICOM <b>123.0 (CTAF)</b>
--------------------------	---------------------------------------	--------------------------	-------------------------------



ELEV 3374	TDZE 3374
REIL Rwy 4	
REIL Rwy 22	
MIRL Rwys 4-22 and 13-31	



CATEGORY	A	B	C	D
S-4	3840-1	466 (500-1)	3840-1¾	466 (500-1¾)
CIRCLING	3940-1	566 (600-1)	4160-2¼ 786 (800-2¼)	4160-2½ 786 (800-2½)

FAF to MAP 5.6 NM					
Knots	60	90	120	150	180
Min:Sec	5:36	3:44	2:48	2:14	1:52

SC-2, 31 OCT 2024 to 28 NOV 2024

SC-2, 31 OCT 2024 to 28 NOV 2024