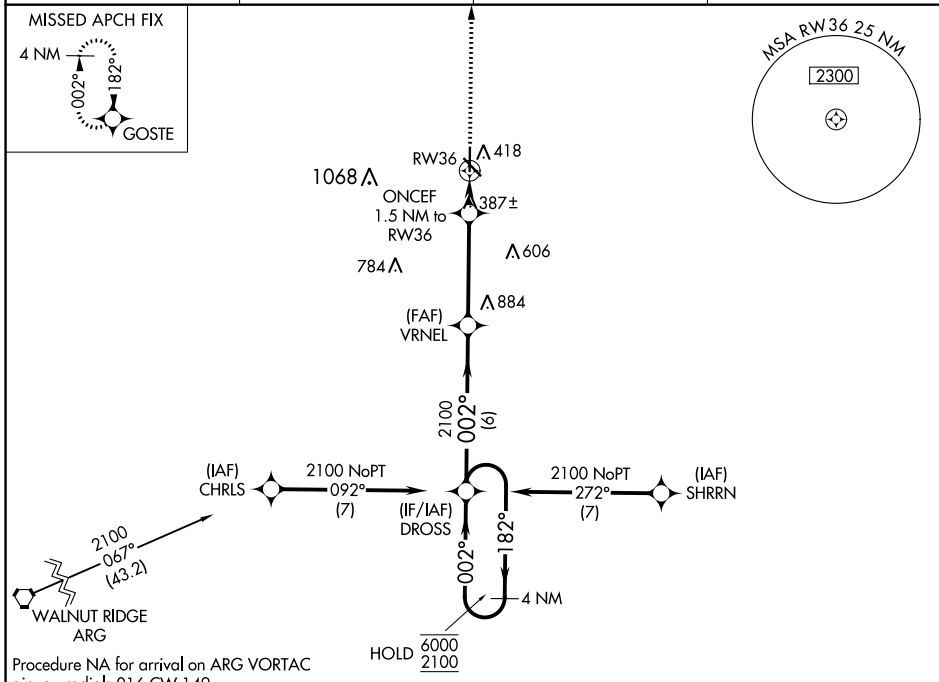


WAAS CH 93815 W36A	APP CRS 002°	Rwy Idg 5010
		TDZE 295
		Apt Elev 295

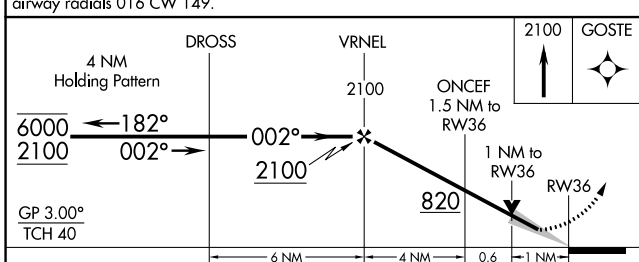
RNAV (GPS) RWY 36

MALDEN RGNL (M.A.W)

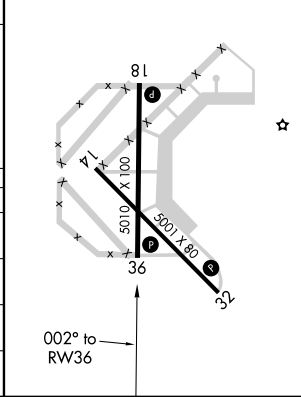
RNP APCH-GPS.		MISSED APPROACH: Climb to 2100 direct GOSTE and hold.	
<p>▼ For uncompensated Baro-VNAV systems, LNAV/VNAV ▲ NA below -15°C or above 54°C.</p>			
AWOS-3PT 119.825	MEMPHIS CENTER 133.65 292.15	GCO 135.075	UNICOM 122.8 (CTAF) 0



Procedure NA for arrival on ARG VORTAC
airway radials 016 CW 149.



ELEV 295	TDZE 295
REIL Rwy 14, 18, 32, and 36 0	
MIRL Rwy 14-32 and 18-36 0	



CATEGORY	A	B	C	D
LPV DA		495-1 200 (200-1)		NA
LNAV/VNAV DA		545-1 250 (300-1)		NA
LNAV MDA		640-1 345 (400-1)		NA
C CIRCLING	720-1 425 (500-1)	800-1 505 (600-1)	800-1½ 505 (600-1½)	NA

NC-3, 31 OCT 2024 to 28 NOV 2024

NC-3, 31 OCT 2024 to 28 NOV 2024