

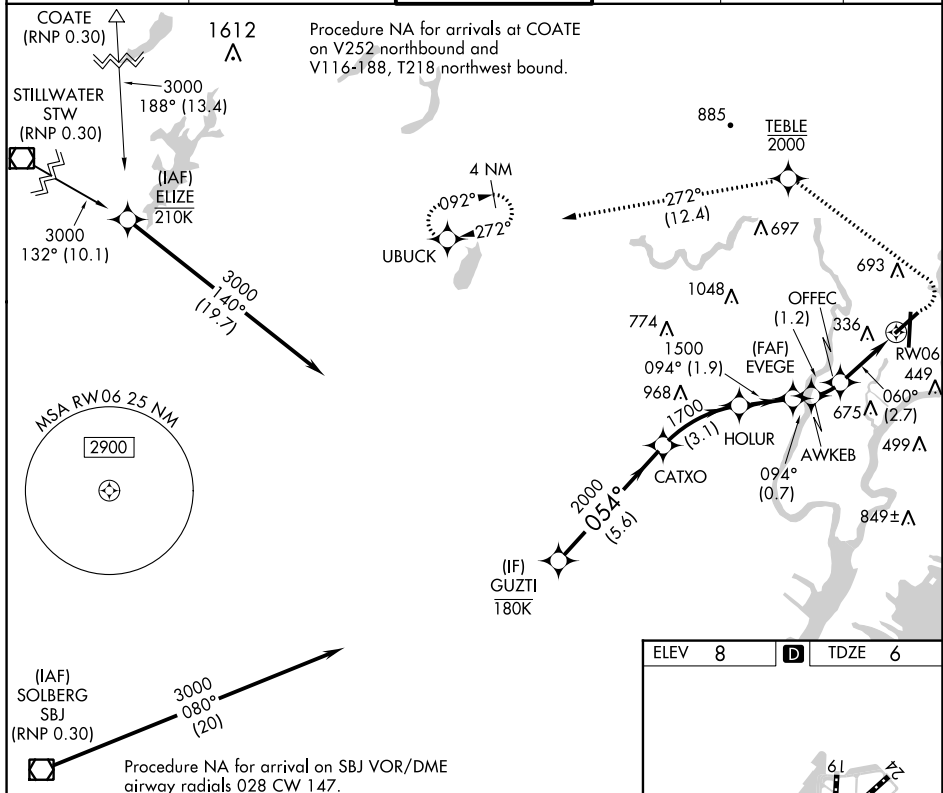
APP CRS	Rwy Idg	<b>6013</b>
<b>060°</b>	TDZE	<b>6</b>
	Apt Elev	<b>8</b>

# RNAV (RNP) Z RWY 6

TETERBORO (TEB)

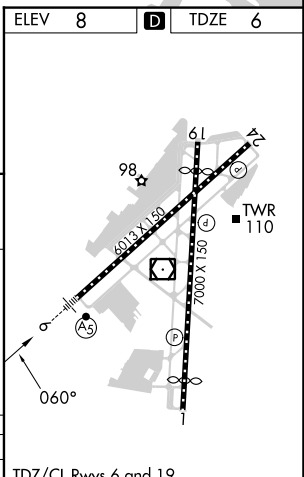
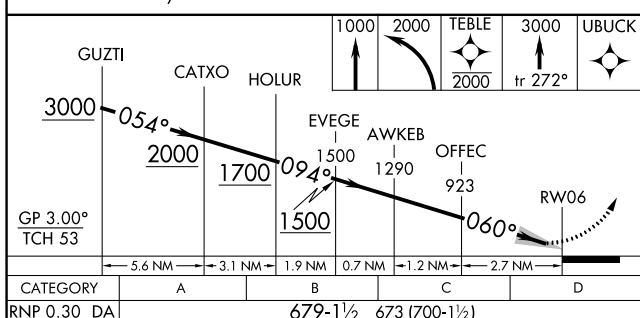
RNP AR APCH - GPS. RADAR required.	MALSR	MISSED APPROACH: Climb to 1000, then climbing left turn to 2000 direct TEBLE, cross TEBLE at or below 2000, then climb to 3000 on track 272° to UBUCK and hold.
▼ For uncompensated Baro-VNAV systems, procedure NA below -13°C or above 54°C. For inop ALS, increase RNP 0.30 all Cats visibility to 1½ SM.		

D-ATIS <b>114.2 132.85</b>	NEWARK APP CON <b>127.6 379.9</b>	TETERBORO TOWER <b>119.5</b>	GND CON <b>121.9</b>	CLNC DEL <b>128.05</b>	CPDLC
-------------------------------	--------------------------------------	---------------------------------	-------------------------	---------------------------	-------



NE-2, 31 OCT 2024 to 28 NOV 2024

NE-2, 31 OCT 2024 to 28 NOV 2024



CATEGORY	A	B	C	D
RNP 0.30 DA		679-1½	673 (700-1½)	

## AUTHORIZATION REQUIRED

TDZ/CL Rws 6 and 19  
HIRL Rws 1-19 and 6-24  
REIL Rws 1, 6, 19 and 24