

WENTZ ONE DEPARTURE (RNAV)

TETERBORO (TEB)
TETERBORO, NEW JERSEY

NE-2, 31 OCT 2024 to 28 NOV 2024

NEWARK DEP CON
119.2 126.7 379.9
D-ATIS
114.2 132.85
CINC DEL
128.05
CPDLC
GND CON
121.9
TETERBORO TOWER
119.5

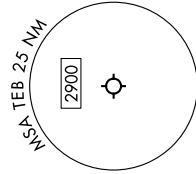
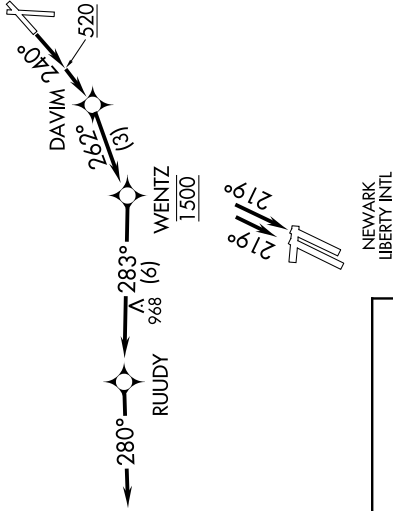
RNAV 1 - DME/DME/IRU or GPS.
RADAR required.

TOP ALTITUDE:
1500

NOTE: CAUTION between TEB airport and WENTZ, EWR traffic overhead at 2500' MSL.
NOTE: If unable to accept climb rate, advise ATC on initial contact.

TAKEOFF MINIMUMS:

Rwy 24: Standard with minimum
climb of 500'/NM to 520.



NOTE: Chart not to scale.

DEPARTURE ROUTE DESCRIPTION

TAKEOFF RUNWAY 24: Climb on heading 240° to 520, then direct DAVIM, then on track 262° to cross WENTZ at 1500, then on track 283° to RUUDY, then on track 280°, thence....

...expect RADAR vectors. Maintain 1500, expect clearance to filed altitude ten minutes after departure.

LOST COMMUNICATIONS:

After crossing WENTZ at 1500, then climb to cross RUUDY at 2000. Then proceed to first filed FIX and climb to filed altitude.

WENTZ ONE DEPARTURE (RNAV)

TETERBORO, NEW JERSEY
TETERBORO (TEB)

NE-2, 31 OCT 2024 to 28 NOV 2024