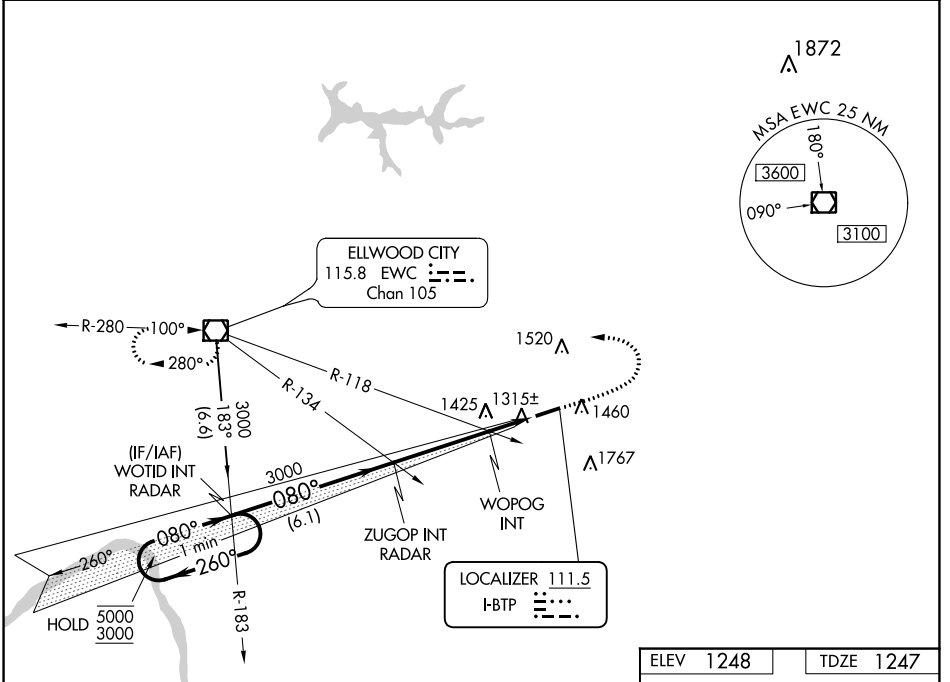


LOC I-BTP 111.5	APP CRS 080°	Rwy Idg 4801
		TDZE 1247
		Apt Elev 1248

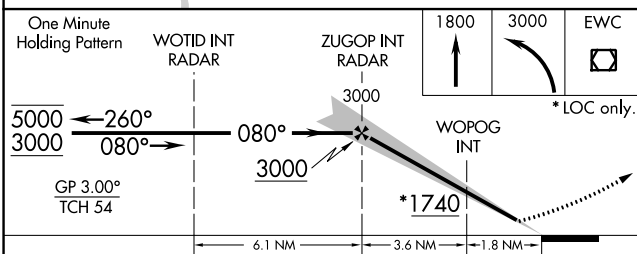
ILS or LOC RWY 8
PITTSBURGH/BUTLER RGNL (BTP)

<p>▽ Rwy 8 helicopter visibility reduction below 3/4 SM NA. ▲ Circling Rwy 26 NA at night. S-ILS 8 inop table does not apply.</p>	<p>MALSF </p>	<p>MISSED APPROACH: Climb to 1800 then climbing left turn to 3000 direct EWC VOR/DME and hold.</p>	
AWOS-3PT 121.450	PITTSBURGH APP CON 124.75 338.2	CLNC DEL 119.4	UNICOM 123.05 (CTAF) 0



NE-4, 31 OCT 2024 to 28 NOV 2024

NE-4, 31 OCT 2024 to 28 NOV 2024



ELEV 1248	TDZE 1247
One Minute Holding Pattern	WOTID INT RADAR
ZUGOP INT RADAR	WOPOG INT
1800	3000
EWC	
5000 ← 260°	← 080° →
3000	080°
GP 3.00°	TCH 54
6.1 NM	3.6 NM
1.8 NM	
*1740	
080° 5.4 NM from FAF	
REIL Rwy 26 0	HIRL Rwy 8-26 0
FAF to MAP 5.4 NM	
Knots	60 90 120 150 180
Min:Sec	5:24 3:36 2:42 2:10 1:48

CATEGORY	A	B	C	D
S-ILS 8		1497-3/4	250 (300-3/4)	
S-LOC 8	1740-3/4	493 (500-3/4)	1740-1 1/8	493 (500-1 1/8)
C CIRCLING	1820-1	572 (600-1)	2080-2 1/2	2080-2 3/4
			832 (900-2 1/2)	832 (900-2 3/4)
WOPOG FIX MINIMUMS (DUAL VOR RECEIVERS REQUIRED)				
S-LOC 8		1580-3/4	333 (400-3/4)	
C CIRCLING	1820-1	572 (600-1)	2080-2 1/2	2080-2 3/4
			832 (900-2 1/2)	832 (900-2 3/4)