

WAAS CH 82399 W33A	APP CRS 333°	Rwy Ldg TDZE Apt Elev	9803 995 1015
--	------------------------	-----------------------------	--

RNAV (GPS) RWY 33

ROBERT GRAY AAF (GRK)

RNP APCH - GPS.

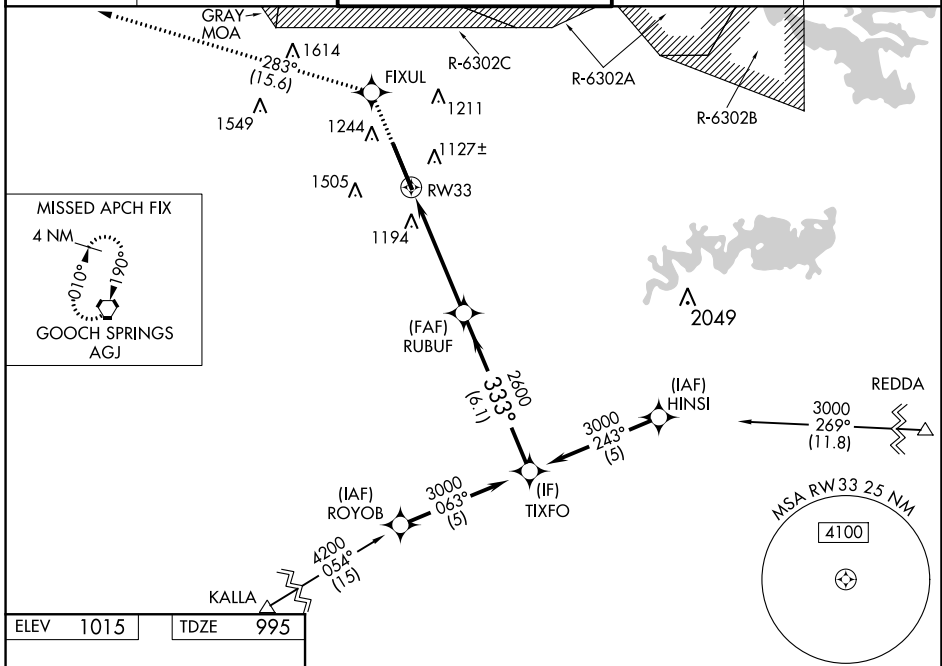
⚠ For uncompensated Baro-VNAV systems, LNAV/VNAV NA below -17°C or above 54°C. Circling NA west of Rwy 15-33.
⚠ For inop ALS, increase LPV Cat E visibility to 3/4 SM, LNAV/VNAV Cat E visibility to 2 SM, and LNAV Cat E visibility to 1/2 SM.

MALSR

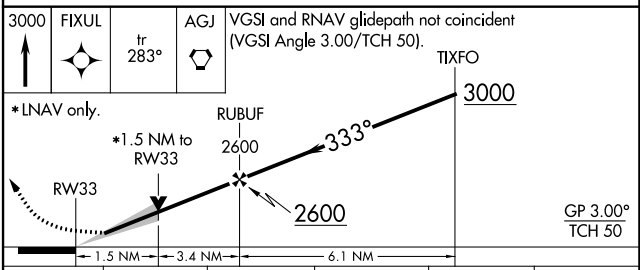
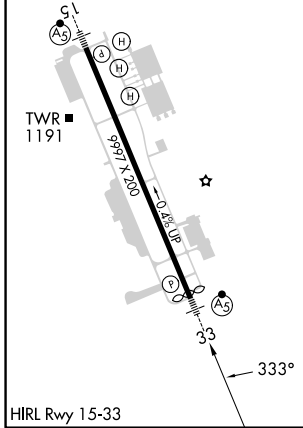


MISSED APPROACH: Climb to 3000 direct FIXUL and on track 283° to AGJ VORTAC and hold.

ATIS 124.9	GRAY APP CON 120.075 323.15	GRAY TOWER 120.75(CTAF) 285.5	GND CON 121.8 279.5	CLNC DEL 126.2 251.1
----------------------	---------------------------------------	---	-------------------------------	--------------------------------



ELEV 1015	TDZE 995
-----------	----------



CATEGORY	A	B	C	D	E
LPV DA	1195-1/2		200 (200-1/2)		
LNAV/VNAV DA	1552-1/2		557 (600-1/2)		
LNAV MDA	1460-1/2	465 (500-1/2)	1460-1	465 (500-1)	
C CIRCLING	1540-1	525 (600-1)	1560-1/2 545 (600-1/2)	1620-2 605 (700-2)	1740-2 1/2 725 (800-2 1/2)

SC-3, 31 OCT 2024 to 28 NOV 2024

SC-3, 31 OCT 2024 to 28 NOV 2024