


LOC/DME I-OOS 111.55	APP CRS 095°	Rwy Idg TDZE Apt Elev	5000 39 55
Chan 52 (Y)			

ILS or LOC RWY 9R

ORLANDO SANFORD INTL (SF'B)

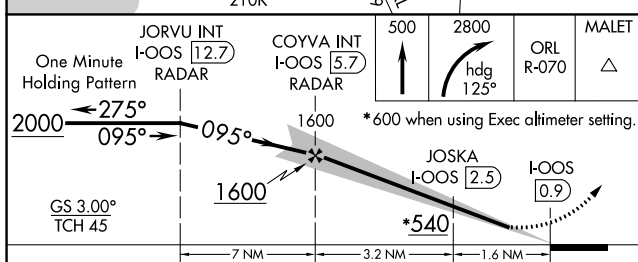
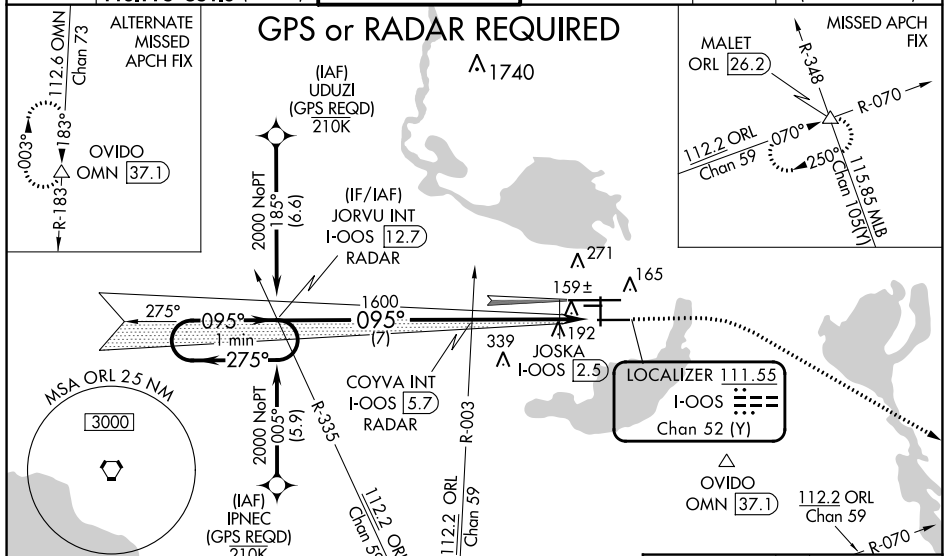
▽ **△** When local altimeter setting not received, use Exec altimeter setting and increase S-ILS DA to 282, and all MDA 60 feet; increase S-LOC 9R Cat C, D visibility $\frac{1}{4}$ mile, Circling Cat C visibility $\frac{1}{8}$ mile and JOSKA Fix Minimums S-LOC 9R Cats C, D visibility $\frac{1}{4}$ mile. Simultaneous approach authorized with Rwy 9L. Night landing: Rwy 27C NA.

MALS R



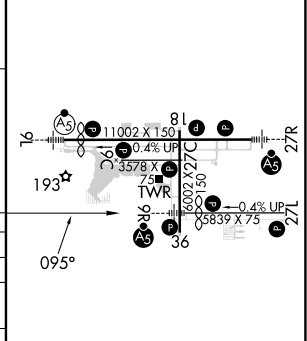
MISSED APPROACH: Climb to 500 then climbing right turn to 2800 on heading 125° and ORL VORTAC R-070 to MALET INT/ORL 26.2 DME and hold.

ATIS 125.975	ORLANDO APP CON 135.3 351.9 (NORTH) 119.775 351.9 (SOUTH)	SANFORD TOWER* 120.3 (CTAF) 0 254.35	GND CON 121.35 254.35	CLNC DEL 123.975	CLNC DEL 121.35 (When twr closed)
------------------------	---	--	---------------------------------	----------------------------	--



ELEV 55	D TDZE 39
---------	------------------

CATEGORY	A	B	C	D
S-ILS 9R		239- $\frac{1}{2}$	200 (200- $\frac{1}{2}$)	
S-LOC 9R	540- $\frac{1}{2}$	501 (500- $\frac{1}{2}$)	540-1	501 (500-1)
C CIRCLING	580-1	525 (600-1)	600-1 $\frac{1}{2}$ 545 (600-1 $\frac{1}{2}$)	640-2 585 (600-2)
JOSKA FIX MINIMUMS (DME REQUIRED)				
S-LOC 9R	440- $\frac{1}{2}$	401 (400- $\frac{1}{2}$)	440- $\frac{3}{4}$	401 (400- $\frac{3}{4}$)
C CIRCLING	580-1	525 (600-1)	600-1 $\frac{1}{2}$ 545 (600-1 $\frac{1}{2}$)	640-2 585 (600-2)



MIRL Rwy 9C-27C and 18-36
HIRL Rwy 9L-27R and 9R-27L
REIL Rws 9C, 18, 27L and 36

FAF to MAP 4.8 NM

Knots	60	90	120	150	180
Min:Sec	4:48	3:12	2:24	1:55	1:36