

OXNARD, CALIFORNIA

# TACAN Y or VOR/DME RWY 3

VORTAC FIM <b>112.5</b> Chan <b>72</b>	APCH CRS <b>025°</b>	Rwy Idg <b>11,102</b> TDZE <b>10</b> Arprt Elev <b>13</b>
----------------------------------------------	-------------------------	-----------------------------------------------------------------------

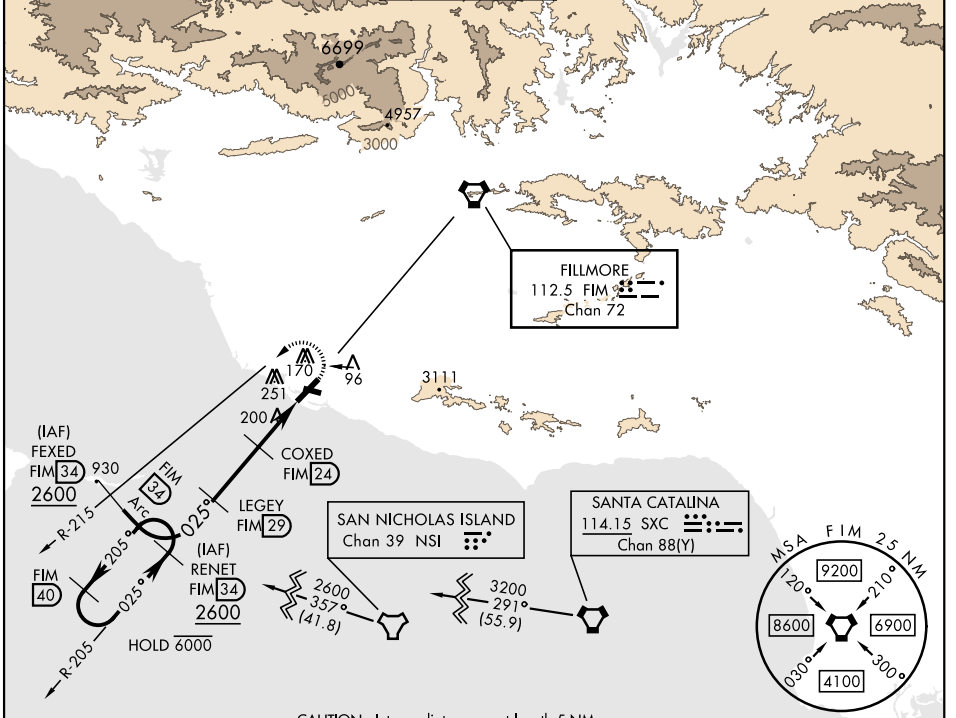
[USN] POINT MUGU NAS (NAVAL BASE VENTURA CO) (KNTD)

▼ \* When ALS inop, increase CAT AB vis to 1 mile, CAT CDE to 1½ miles.  
\*\* Circling not authorized E of Rwy 3-21.

SALSF

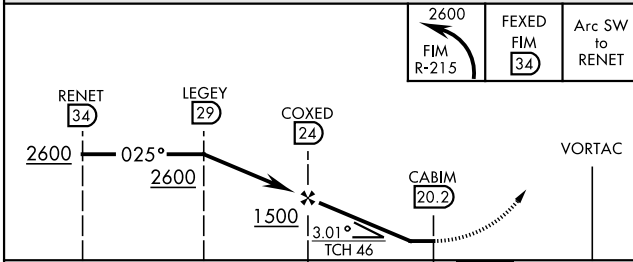
MISSED APPROACH: Climbing left turn to 2600. Intercept the FIM VORTAC R-215, then via FIM R-215 to FEDEX, Arc SW of FIM via the 34 DME arc to RENET and hold.

ATIS * <b>125.55 363.05</b>	POINT MUGU APP CON <b>128.65 307.275</b>	POINT MUGU TOWER * <b>124.85 290.375</b>	GND CON <b>121.6 360.2</b>	CLNC DEL <b>120.75 279.55</b>	ASR/ PAR
--------------------------------	---------------------------------------------	---------------------------------------------	-------------------------------	----------------------------------	-------------



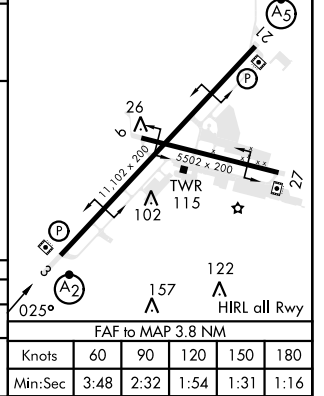
CAUTION: Intermediate segment length 5 NM.

EMERG SAFE ALT 100 NM 12,100



CATEGORY	A	B	C	D	E
S-3*	460-¾ 450 (500-¾)		460-1 450 (500-1)		
CIRCLING **	460-1 447 (500-1)	480-1 467 (500-1)	480-1½ 467 (500-1½)	580-2 567 (600-2)	NA

ELEV	13
TDZE	10



OXNARD, CALIFORNIA  
Amdt 5 31DEC20

34°07'N-119°07'W

POINT MUGU NAS (NAVAL BASE VENTURA CO) (KNTD)

# TACAN Y or VOR/DME RWY 3

SW-3, 31 OCT 2024 to 28 NOV 2024

SW-3, 31 OCT 2024 to 28 NOV 2024