

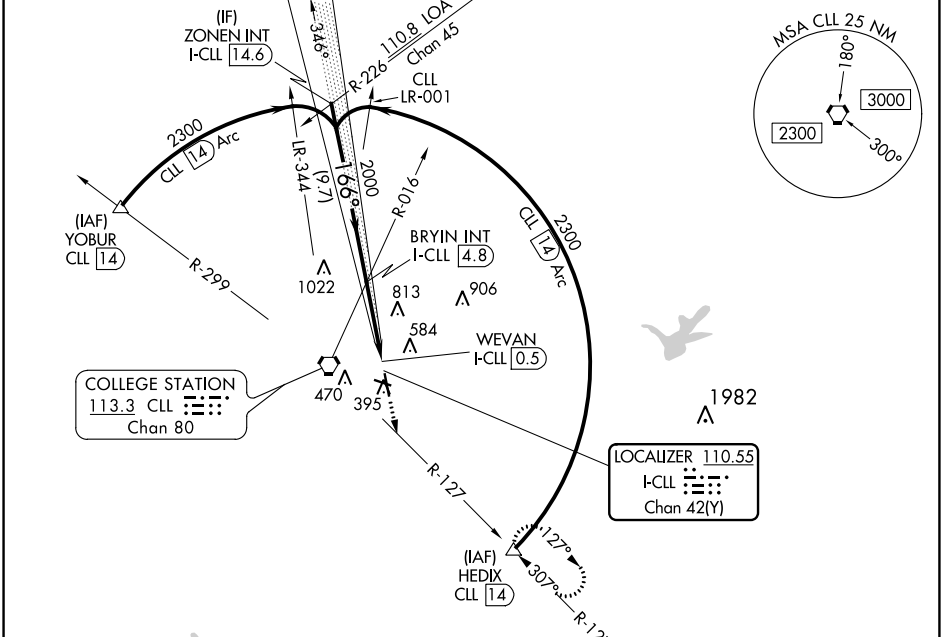
LOC/DME I-CLL 110.55 Chan 42(Y)	APP CRS 166°	Rwy Idg TDZE Apt Elev	7000 321 321
--	------------------------	-----------------------------	---

LOC BC RWY 17

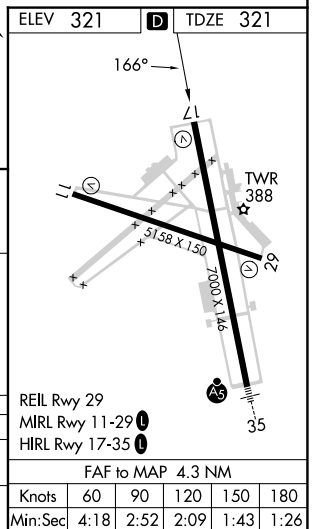
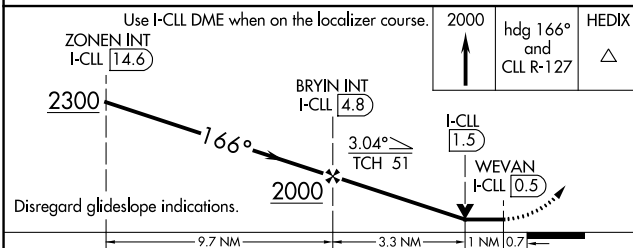
EASTERWOOD FLD (CLL)

DME required.		MISSED APPROACH: Climb to 2000 on heading 166° and CLL R-127 to HEDIX/CLL 14 DME and hold.				
▼ ▲ Rwy 17 helicopter visibility reduction below ¾ SM NA.						

ATIS 126.85	HOUSTON APP CON 134.3 360.85	EASTERWOOD TOWER ★ 118.5 (CTAF) 284.7	GND CON 128.7 284.7	CLNC DEL 128.7	CLNC DEL 120.4 (when twr closed)	UNICOM 122.95
-----------------------	--	---	-------------------------------	--------------------------	---	-------------------------



BACK COURSE



CATEGORY	A	B	C	D	E
S-LOC 17	940-1	619 (700-1)	940-1¾	619 (700-1¾)	
Ⓢ CIRCLING	940-1	619 (700-1)	1000-2 679 (700-2)	1180-2¾ 859 (900-2¾)	1180-3 859 (900-3)

SC-5, 31 OCT 2024 to 28 NOV 2024

SC-5, 31 OCT 2024 to 28 NOV 2024