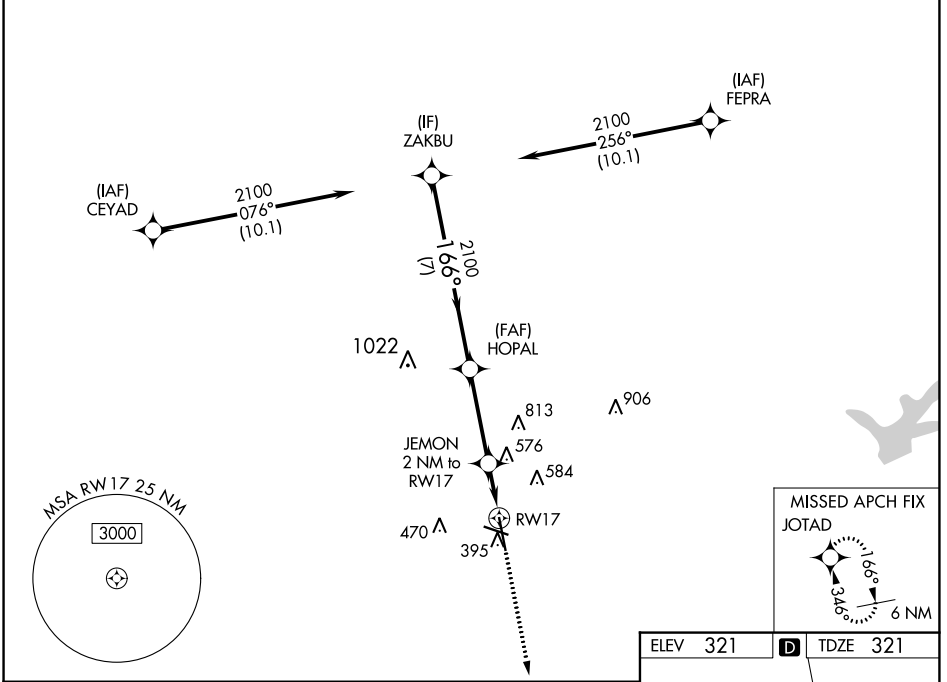


WAAS CH 78322 W17A	APP CRS 166°	Rwy Idg TDZE Apt Elev	7000 321 321
--	------------------------	-----------------------------	---

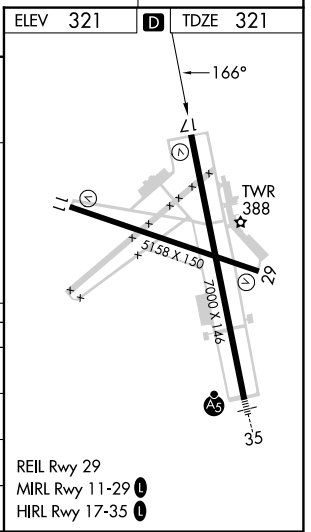
RNAV (GPS) RWY 17

EASTERWOOD FLD (CLL)

RNP APCH.				MISSED APPROACH: Climb to 2000 direct JOTAD and hold.		
⚠ For uncompensated Baro-VNAV systems, LNAV/VNAV NA below -3°C or above 54°C. Rwy 17 helicopter visibility reduction below 3/4 SM NA.						
ATIS 126.85	HOUSTON APP CON 134.3 360.85	EASTERWOOD TOWER ★ 118.5 (CTAF) 0 284.7	GND CON 128.7 284.7	CLNC DEL 128.7	CLNC DEL 120.4 <small>(when twr closed)</small>	UNICOM 122.95



ZAKBU	HOPAL	JEMON 2 NM to RWY 17	RWY 17	2000	JOTAD
				GP 3.00° TCH 51	*LNAV only.
2100		2100	*1000		
7 NM		3.4 NM	0.5	1.5 NM	
CATEGORY	A	B	C	D	E
LPV DA	571-3/4		250 (300-3/4)		
LNAV/VNAV DA	637-1		316 (400-1)		
LNAV MDA	840-1	519 (600-1)	840-1 3/8	519 (600-1 3/8)	
CIRCLING	860-1	880-1	1000-2	1180-2 3/4	1180-3
	539 (600-1)	559 (600-1)	679 (700-2)	859 (900-2 3/4)	859 (900-3)



SC-5, 31 OCT 2024 to 28 NOV 2024

SC-5, 31 OCT 2024 to 28 NOV 2024