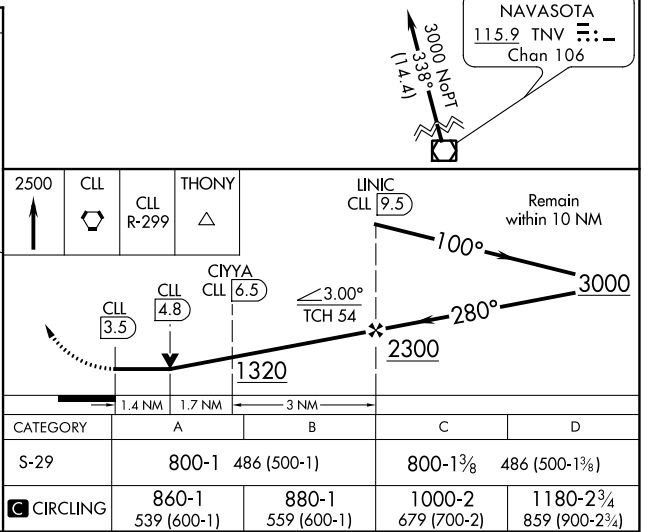
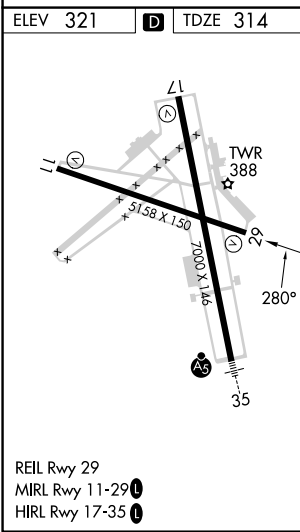
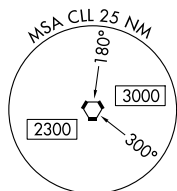
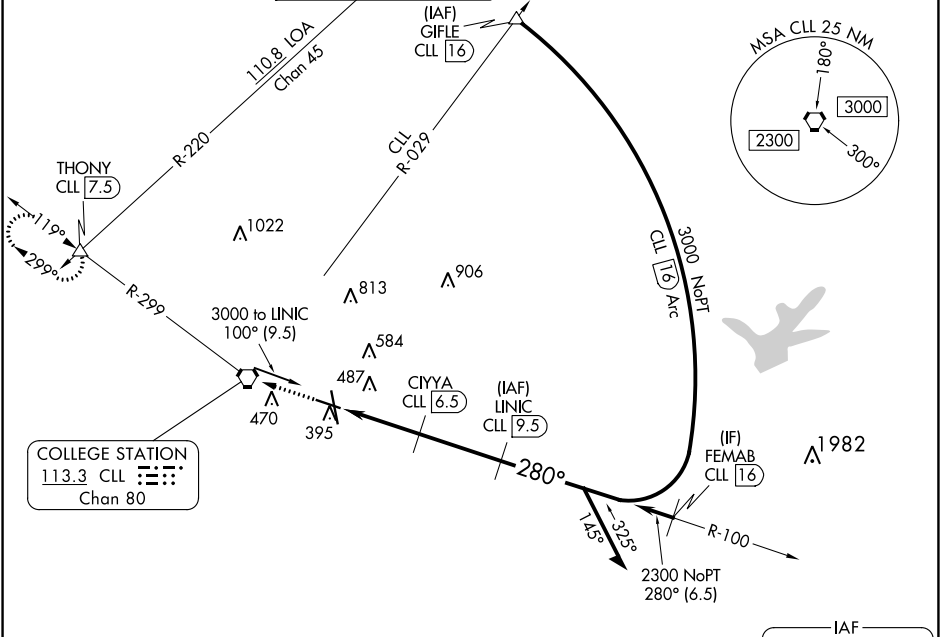


VORTAC CLL 113.3 Chan 80	APP CRS 280°	Rwy Idg 5158 TDZE 314 Apt Elev 321
--	------------------------	---

VOR RWY 29

EASTERWOOD FLD (CLL)

DME required for procedure entry. DME required.		MISSED APPROACH: Climb to 2500 direct CLL VORTAC then on CLL VORTAC R-299 to THONY INT/CLL 7.5 DME and hold.						
▼ ▲ Rwy 29 helicopter visibility reduction below 3/4 SM NA.		ATIS 126.85	HOUSTON APP CON 134.3 360.85	EASTERWOOD TOWER ★ 118.5 (CTAF) 284.7	GND CON 128.7 284.7	CLNC DEL 128.7	CLNC DEL 120.4 (when twr closed)	UNICOM 122.95



SC-5, 31 OCT 2024 to 28 NOV 2024

SC-5, 31 OCT 2024 to 28 NOV 2024