

HI-TACAN Z RWY 5R

TACAN NTU Chan 113	APCH CRS 043°	Rwy Idg 12,001	TDZE 19	Arprt Elev 22
-----------------------	------------------	-------------------	------------	------------------

[USN]

OCEANA NAS (APOLLO SOUCEK FLD) (KNTU)

* When ALS inop, increase CAT CDE vis to 1½ miles. MISSED APPROACH: Climb to 3000 via R-223 to NTU TACAN, and via R-064 to SKOUT and hold.

ALSF-1

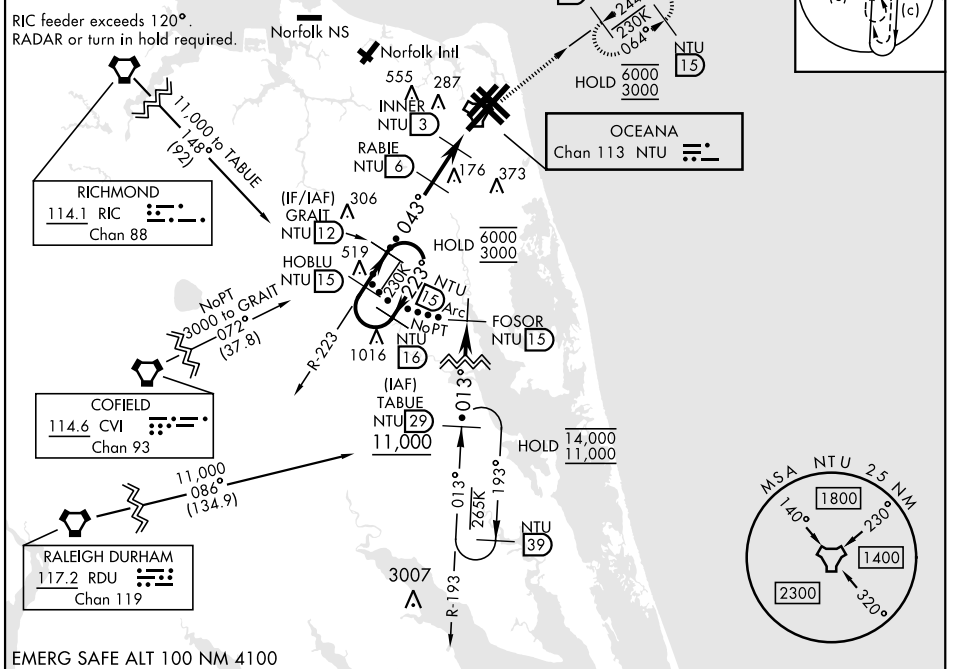
ATIS 317.6	APP/DEP CON 123.9 266.8	TOWER 127.075 360.2	GND CON 119.6 336.4	CLNC DEL 254.4	ASR/ PAR
---------------	----------------------------	------------------------	------------------------	-------------------	-------------

Knots	60	120	180	240	300	360
V/V(fpm)	210	420	630	840	1050	1260

Min climb of 210 ft/NM to 3000 - Controlling Obstacle Unk

CAUTION: Final approach crs 72° from rwy cntrln at 3000' from thld.

RIC feeder exceeds 120°. RADAR or turn in hold required.



EMERG SAFE ALT 100 NM 4100

	3000 ↑ NTU R-223	NTU 	NTU R-064 	ELEV 22	TDZE 19
--	---------------------------	---------	------------------	---------	---------

CATEGORY	C	D	E
S-5R *	420-¾	401	(400-¾)
CIRCLING	600-1½ 578 (600-1½)	600-2 578 (600-2)	900-3 878 (900-3)

HIRL all Rwy
Wave-Off Lgt all Rwy

VIRGINIA BEACH, VIRGINIA 36°49'N-76°02'W OCEANA NAS (APOLLO SOUCEK FLD) (KNTU)

HI-TACAN Z RWY 5R

NE-3, 31 OCT 2024 to 28 NOV 2024

NE-3, 31 OCT 2024 to 28 NOV 2024