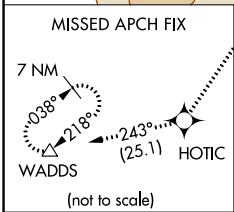
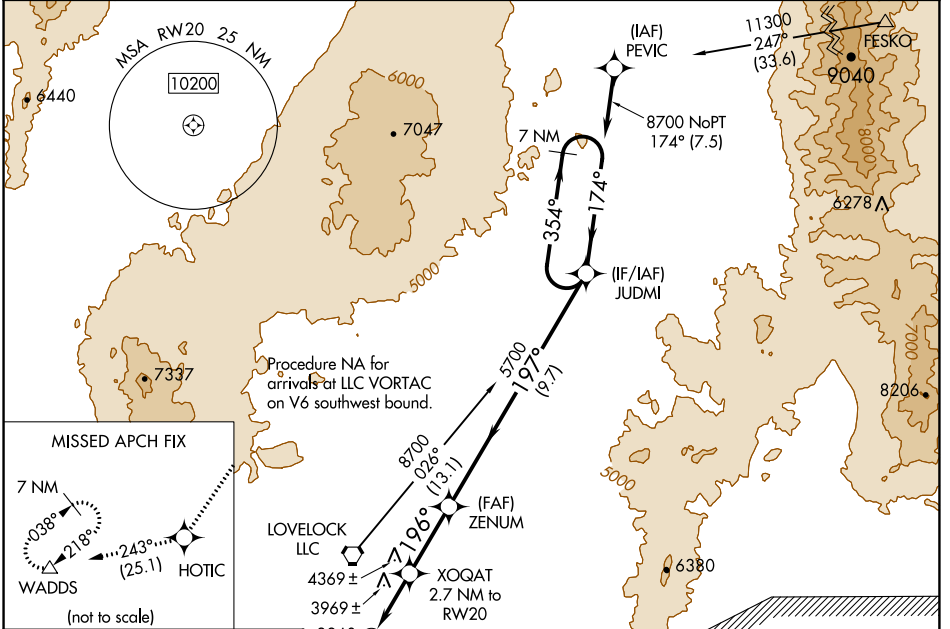


WAAS CH 78240 W20A	APP CRS 196°	Rwy ldg TDZE 3908 Apt Elev 3908
--	------------------------	---

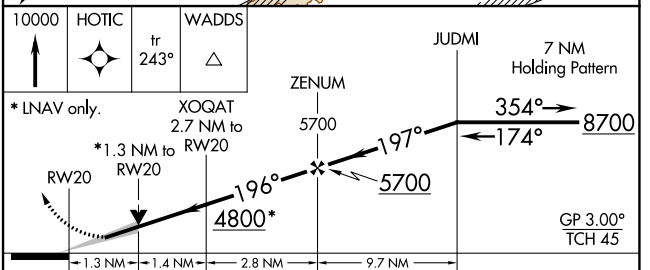
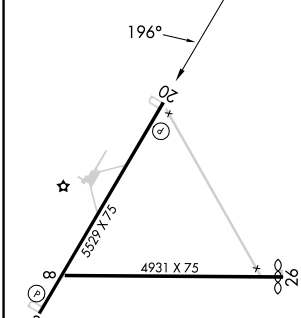
RNAV (GPS) RWY 20

DERBY FLD (L.O.L.)

<p>For uncompensated Baro-VNAV systems, LNAV/VNAV NA below -19°C (-2°F) or above 52°C (127°F). Circling NA northwest of Rwy 2-20. DME/DME RNP-0.3 NA.</p>	<p>MISSED APPROACH: Climb to 10000 direct HOTIC and on track 243° to WADDS and hold.</p>	
	<p>ASOS 120.675</p>	<p>OAKLAND CENTER 128.8 285.5</p>



ELEV 3908	TDZE 3908
------------------	------------------



CATEGORY	A	B	C	D
LPV DA	4158-1		250 (300-1)	
LNAV/VNAV DA	4249-1½		341 (400-1½)	
LNAV MDA	4360-1	452 (500-1)	4360-1¾	452 (500-1¾)
CIRCLING	4360-1	452 (500-1)	4540-1¾ 632 (700-1¾)	4680-2½ 772 (800-2½)

REIL Rwy 2 and 20
MIRL Rwy 2-20

SW-4, 31 OCT 2024 to 28 NOV 2024

SW-4, 31 OCT 2024 to 28 NOV 2024