

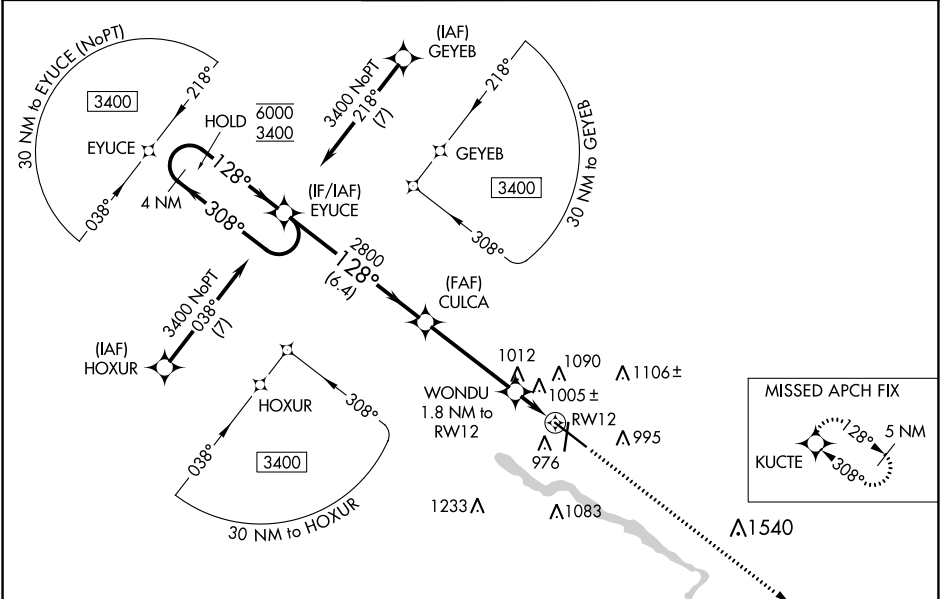
WAAS CH 72801 W12A	APP CRS 128°	Rwy Idg 8399
	TDZE 873	
	Apt Elev 873	

RNAV (GPS) RWY 12

WATERLOO RGNL (A.L.O)

RNP APCH.	<p>For uncompensated Baro-VNAV systems, LNAV/VNAV NA below -19°C or above 54°C. For inop ALS, increase LNAV/VNAV all Cats to RVR 5500. # RVR 1800 authorized with use of FD or AP or HUD to DA.</p>	MALSR	<p>MISSED APPROACH: Climb to 3400 direct KUCTE and hold.</p>
<p>▽ ▲</p>			

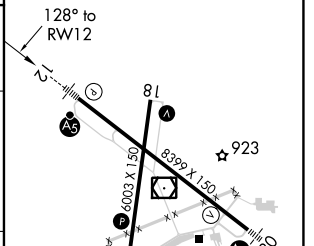
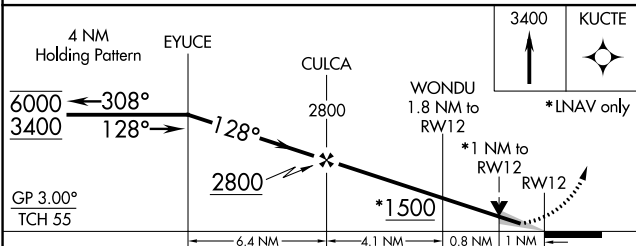
ATIS 120.65	WATERLOO APP CON* 118.9 251.15	WATERLOO TOWER* 125.075 (CTAF) 257.8	GND CON 121.9 269.1	UNICOM 122.95
-----------------------	--	--	-------------------------------	-------------------------



NC-3, 31 OCT 2024 to 28 NOV 2024

NC-3, 31 OCT 2024 to 28 NOV 2024

ELEV 873	D TDZE 873
----------	-------------------



CATEGORY	A	B	C	D
LPV DA#	1073/24 200 (200-½)			
LNAV/VNAV DA	1252/30 379 (400-¾)			
LNAV MDA	1260/24 387 (400-½)	1260/35 387 (400-¾)		
CIRCLING	1360-1 487 (500-1)	1400-1 527 (600-1)	1480-1¾ 607 (700-1¾)	1600-2¼ 727 (800-2¼)

HIRL Rwy 12-30	Ⓛ
MIRL Rwy 18-36	Ⓛ
REIL Rwy 18 and 36	