

(BIXBY1.BIXBY) 24025

AL-954 (FAA)

CHICAGO/ROCKFORD INTL (RFD)

BIXBY ONE DEPARTURE (RNAV)

CHICAGO/ROCKFORD, ILLINOIS

ROCKFORD DEP CON
 121.0 327.0
 ATIS
 127.6
 CLNC DEL
 119.25
 GND CON
 121.9 290.375
 ROCKFORD TOWER
 118.1 290.375

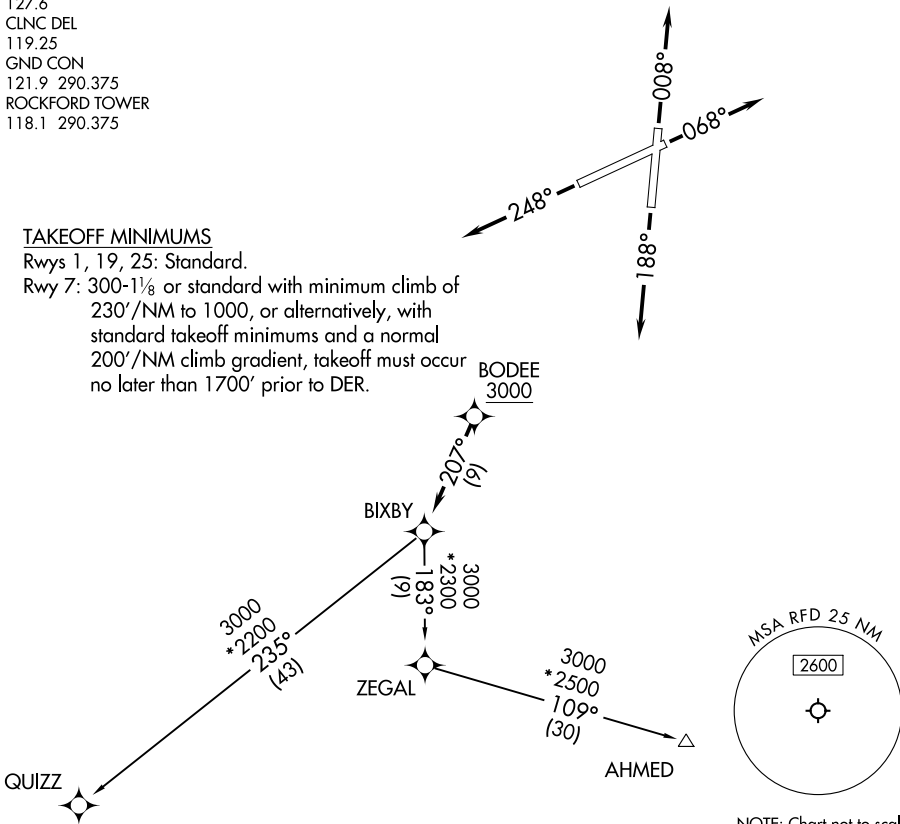
RNAV 1 - DME/DME/IRU or GPS.
 RADAR required.

**TOP ALTITUDE:
 3000**

TAKEOFF MINIMUMS

Rwys 1, 19, 25: Standard.

Rwy 7: 300-1 $\frac{1}{8}$ or standard with minimum climb of 230'/NM to 1000, or alternatively, with standard takeoff minimums and a normal 200'/NM climb gradient, takeoff must occur no later than 1700' prior to DER.



EC-3, 31 OCT 2024 to 28 NOV 2024

EC-3, 31 OCT 2024 to 28 NOV 2024



DEPARTURE ROUTE DESCRIPTION

- TAKEOFF RUNWAY 1: Climb on heading 008° or as assigned by ATC. Thence
- TAKEOFF RUNWAY 7: Climb on heading 068° or as assigned by ATC. Thence
- TAKEOFF RUNWAY 19: Climb on heading 188° or as assigned by ATC. Thence
- TAKEOFF RUNWAY 25: Climb on heading 248° or as assigned by ATC. Thence

. . . . for RADAR vectors to BODEE. Then on track 207° to BIXBY, then on transition. Maintain 3000. Expect filed altitude 10 minutes after departure.

AHMED TRANSITION (BIXBY1.AHMED)

QUIZZ TRANSITION (BIXBY1.QUIZZ)

BIXBY ONE DEPARTURE (RNAV)

(BIXBY1.BIXBY) 25JAN24

CHICAGO/ROCKFORD, ILLINOIS
 CHICAGO/ROCKFORD INTL (RFD)