

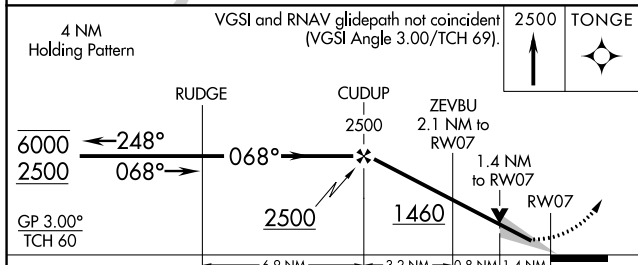
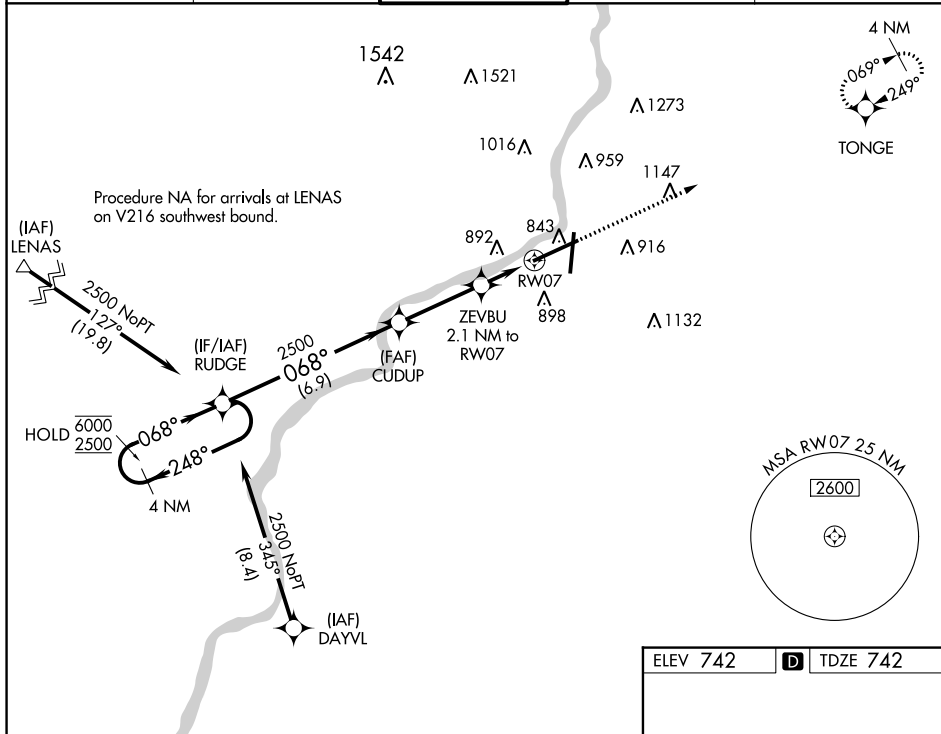
WAAS CH 53621 W07A	APP CRS 068°	Rwy Idg 10002 TDZE 742 Apt Elev 742
--	------------------------	--

RNAV (GPS) RWY 7

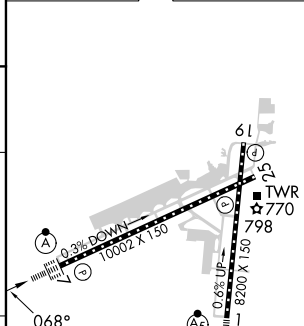
CHICAGO/ROCKFORD INTL (RFD)

RNP APCH - GPS.		ALSF-2	MISSED APPROACH: Climb to 2500 direct TONGE and hold.
For uncompensated Baro-VNAV systems, LNAV/VNAV NA below -16°C or above 54°C.			

ATIS 127.6	ROCKFORD APP CON 121.0 327.0	ROCKFORD TOWER 118.1 290.375	GND CON 121.9 290.375	CLNC DEL 119.25
----------------------	--	--	---------------------------------	---------------------------



ELEV 742	D TDZE 742
----------	-------------------



CATEGORY	A	B	C	D
LPV DA		942/24	200 (200-½)	
LNAV/VNAV DA		1167/45	425 (500-¾)	
LNAV MDA	1240/24	498 (500-½)	1240/50	498 (500-1)
C CIRCLING	1240-1 498 (500-1)	1280-1 538 (600-1)	1320-1½ 578 (600-1½)	1460-2¼ 718 (800-2¼)

REIL Rwy 19 and 25
HIRL Rwy 1-19 and 7-25
TDZ/CL Rwy 1 and 7

EC-3, 31 OCT 2024 to 28 NOV 2024

EC-3, 31 OCT 2024 to 28 NOV 2024