

WAAS CH <b>70345</b> <b>W15A</b>	APP CRS <b>148°</b>	Rwy ldg TDZE Apt Elev	<b>5498</b> <b>1048</b> <b>1051</b>
--	------------------------	-----------------------------	---

# RNAV (GPS) RWY 15

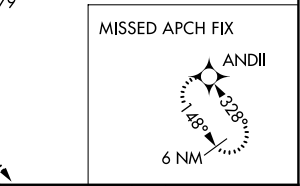
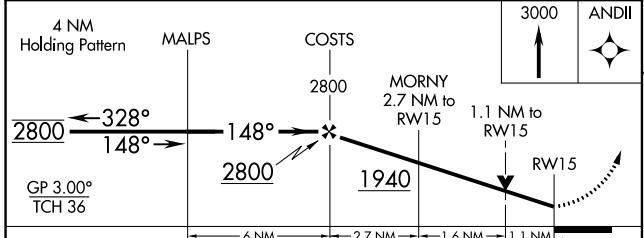
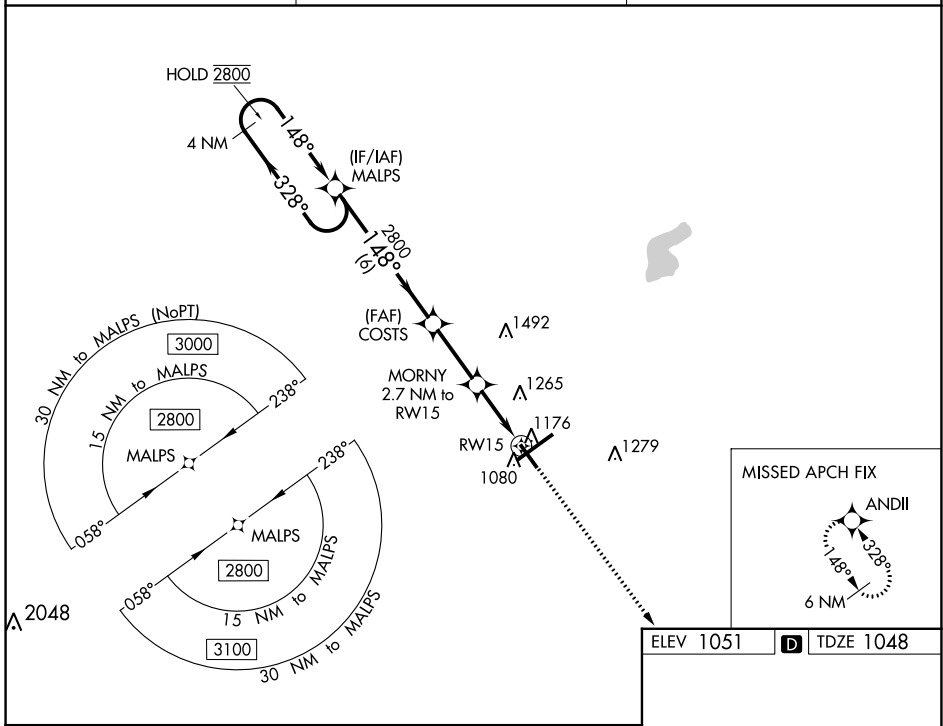
SPRINGFIELD/BECKLEY MUNI (SGH)

RNP APCH - GPS.

▼ Rwy 15 helicopter visibility reduction below  $\frac{3}{4}$  SM NA.  
 ▲ For uncompensated Baro-VNAV systems, LNAV/VNAV NA below -17°C or above 54°C.

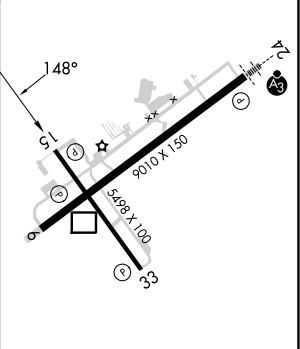
MISSED APPROACH: Climb to 3000 direct ANDII and hold.

AWOS-3PT <b>134.975</b>	COLUMBUS APP CON <b>118.85 269.275</b>	UNICOM <b>122.95 (CTAF) ①</b>
----------------------------	---	----------------------------------



ELEV 1051	TDZE 1048
-----------	-----------

CATEGORY	A	B	C	D
LPV DA		1298- $\frac{3}{4}$	250 (300- $\frac{3}{4}$ )	
LNAV/VNAV DA		1337- $\frac{7}{8}$	289 (300- $\frac{7}{8}$ )	
LNAV MDA	1440-1	392 (400-1)	1440-1 $\frac{1}{8}$	392 (400-1 $\frac{1}{8}$ )
CIRCLING	1480-1 429 (500-1)	1580-1 529 (600-1)	1580-1 $\frac{1}{2}$ 529 (600-1 $\frac{1}{2}$ )	1620-2 569 (600-2)



HIRL Rwy 6-24 ①  
 MRL Rwy 15-33 ①  
 REIL Rws 6, 15 and 33 ①

EC-2, 31 OCT 2024 to 28 NOV 2024

EC-2, 31 OCT 2024 to 28 NOV 2024