

| | | |
|-------------|----------|-------------|
| APP CRS | Rwy Idg | 4158 |
| 065° | TDZE | 151 |
| | Apt Elev | 151 |

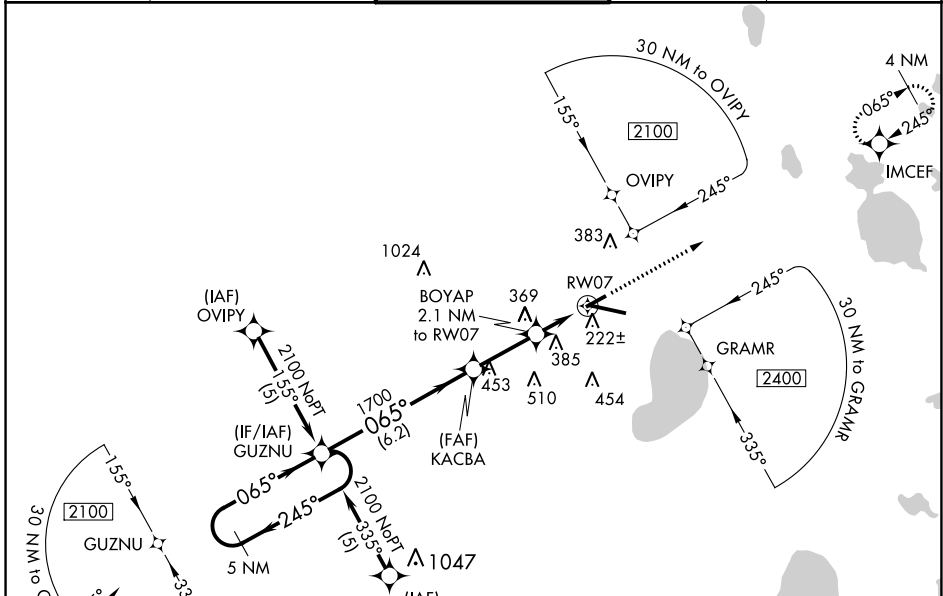
RNAV (GPS) RWY 7

GAINESVILLE RGNL (G.N.V)

⚠ DME/DME RNP-0.3 NA. Visibility reduction by helicopters NA. VDP NA when using Ocala Intl-Jim Taylor Fld altimeter setting. When local altimeter setting not received, use Ocala Intl-Jim Taylor Fld altimeter setting; increase all MDAs 100 feet and increase LNAV Cat C/D and Circling Cat C visibility ¼ SM and Circling Cat D ½ SM. When VGSI inoperative, Circling Rwy 25 NA at night.

MISSED APPROACH: Climb to 2000 direct IMCEF and hold.

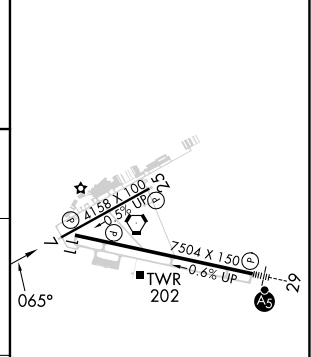
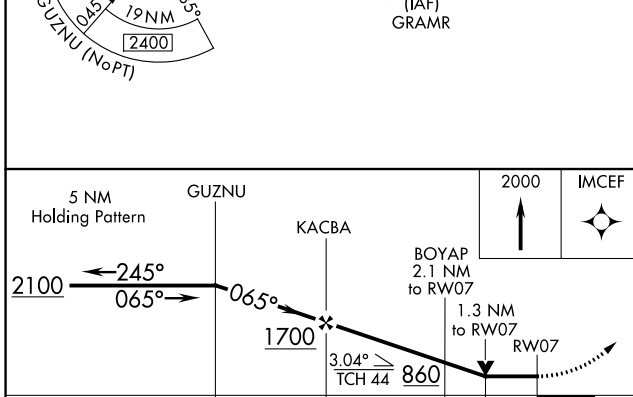
| | | | | |
|-----------------------|---|---|-------------------------|-------------------------|
| ATIS 127.15 | JACKSONVILLE APP CON 118.175 338.25 | GAINESVILLE TOWER★ 119.55(CTAF) 0 353.7 | GND CON 121.7 | UNICOM 122.95 |
|-----------------------|---|---|-------------------------|-------------------------|



SE-3, 31 OCT 2024 to 28 NOV 2024

SE-3, 31 OCT 2024 to 28 NOV 2024

| | |
|----------|----------|
| ELEV 151 | TDZE 151 |
|----------|----------|



| CATEGORY | A | B | C | D |
|----------|-------------------|-------------------|-------------------|-------------------|
| LNAV MDA | 620-1 469 (500-1) | 620-1 469 (500-1) | 620-1 469 (500-1) | 620-1 469 (500-1) |
| CIRCLING | 620-1 469 (500-1) | 700-1 549 (600-1) | 760-1 609 (700-1) | 820-2 669 (700-2) |

REIL Rwy 11
MIRL Rwy 7-25
HIRL Rwy 11-29