

WAAS CH 49119 W19B	APP CRS 196°	Rwy Idg TDZE Apt Elev	7302 1320 1333
--	------------------------	-----------------------------	---

RNAV (GPS) Y RWY 19L

WICHITA DWIGHT D EISENHOWER NTL (ICT)

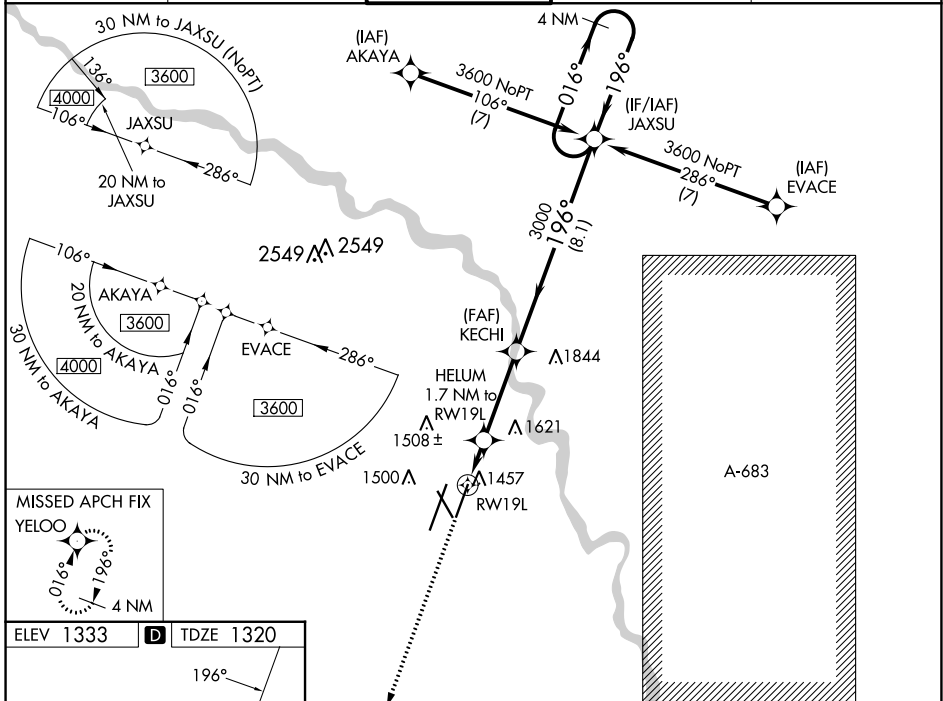
RNP APCH.

▼ For uncompensated Baro-VNAV systems, LNAV/VNAV NA below -15°C (5°F) or above 54°C (130°F). Simultaneous approach authorized with ILS or LOC RWY 19R. LNAV procedure NA during simultaneous operations. Use of FD or AP providing RNAV track guidance required during simultaneous operations.



MISSED APPROACH:
Climb to 3600 direct YELOO and hold.

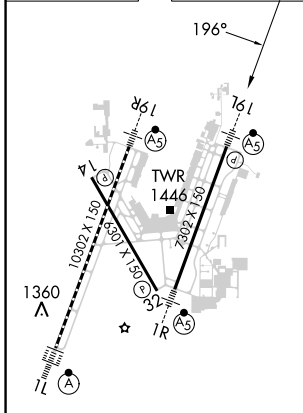
ATIS 125.15	WICHITA APP CON 126.7 353.5	WICHITA TOWER 118.2 257.8	GND CON 121.9 348.6	CLNC DEL 125.7
-----------------------	---------------------------------------	-------------------------------------	-------------------------------	--------------------------



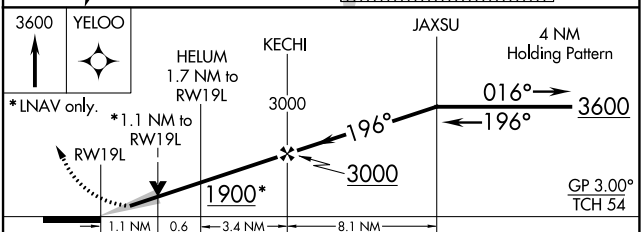
NC-2, 31 OCT 2024 to 28 NOV 2024

NC-2, 31 OCT 2024 to 28 NOV 2024

ELEV 1333	D	TDZE 1320
-----------	----------	-----------



HIRL all Rwys
REIL Rwys 14 and 32
TDZ/CL Rwy 1L



CATEGORY	A	B	C	D
LPV DA		1520-½	200 (200-½)	
LNAV/VNAV DA		1747-¾	427 (500-¾)	
LNAV MDA	1780-½	460 (500-½)	1780-⅞	460 (500-⅞)
C CIRCLING	1800-1	467 (500-1)	1980-1¾ 647 (700-1¾)	1980-2 647 (700-2)