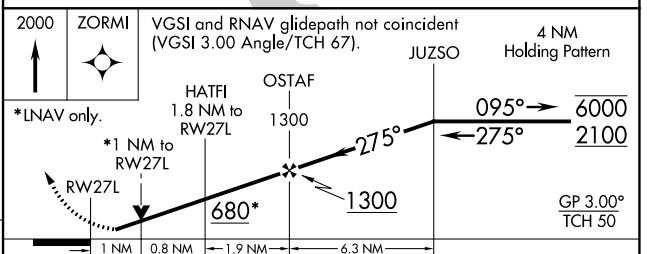
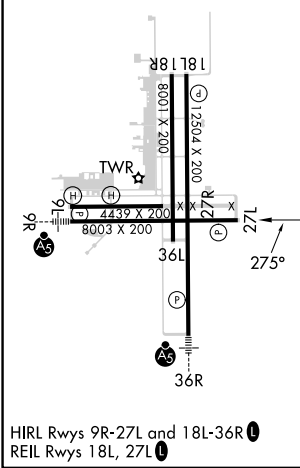
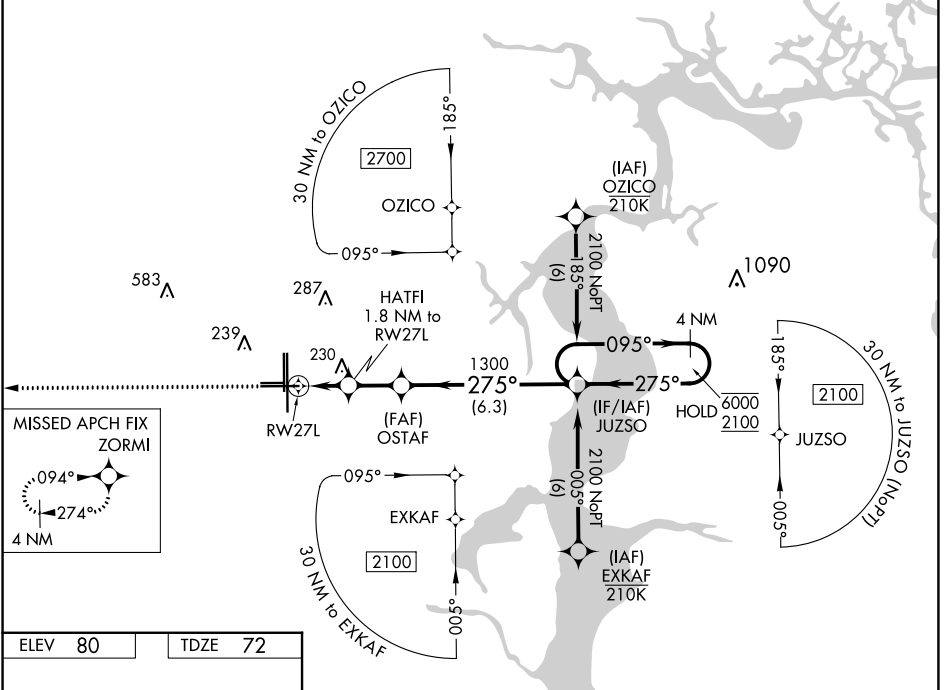


WAAS CH <b>97716</b> <b>W27A</b>	APP CRS <b>275°</b>	Rwy Idg TDZE Apt Elev	<b>8003</b> <b>72</b> <b>80</b>
--	------------------------	-----------------------------	---------------------------------------

# RNAV (GPS) RWY 27L

CECIL (VQQ)

RNP APCH.		CECIL TOWER★		GND CON		CLNC DEL		GCO	
Rwy 27L helicopter visibility reduction below 3/4 SM NA. For uncompensated Baro-VNAV systems, LNAV/VNAV NA below -1.5°C or above 54°C.		<b>126.1</b> (CTAF) <b>0 235.625</b>		<b>121.625 226.675</b>		<b>123.975 254.25</b>		<b>135.075</b>	
ATIS	JACKSONVILLE APP CON	CECIL TOWER★		GND CON		CLNC DEL		GCO	
<b>125.275</b>	<b>127.775 377.075</b>	<b>126.1</b> (CTAF) <b>0 235.625</b>		<b>121.625 226.675</b>		<b>123.975 254.25</b>		<b>135.075</b>	



CATEGORY	A	B	C	D
LPV DA		393-1	321 (400-1)	
LNAV/VNAV DA		451-1	379 (400-1)	
LNAV MDA	540-1	468 (500-1)	540-1 3/8	468 (500-1 3/8)
CIRCLING	540-1 460 (500-1)	560-1 480 (500-1)	600-1 1/2 520 (600-1 1/2)	640-2 560 (600-2)

SE-3, 31 OCT 2024 to 28 NOV 2024

SE-3, 31 OCT 2024 to 28 NOV 2024