

RNAV (GPS) RWY 36R

CECIL (VQQ)

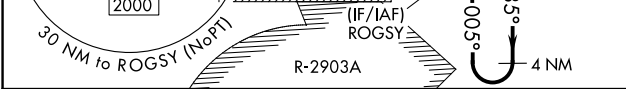
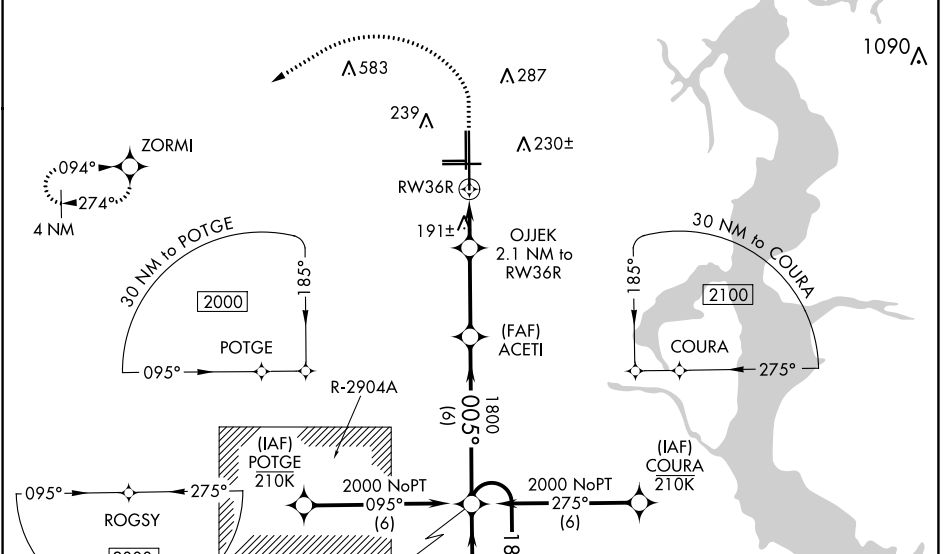
| | | |
|--|------------------------|--|
| WAAS CH 82036 W36A | APP CRS 005° | Rwy Idg 12504 TDZE 72 Apt Elev 80 |
|--|------------------------|--|

⚠ Baro-VNAV and VDP NA when using Jacksonville Intl altimeter setting.
⚠ For uncompensated Baro-VNAV systems, LNAV/VNAV NA below -15°C (5°F) or above 54°C (130°F). DME/DME RNP-0.3 NA. When local altimeter setting not received, use Jacksonville Intl altimeter setting and increase all DA 52 feet and all MDA 60 feet. Increase LNAV/VNAV all Cats visibility to 1 mile and LNAV Cats C, D visibility to ¾ mile.

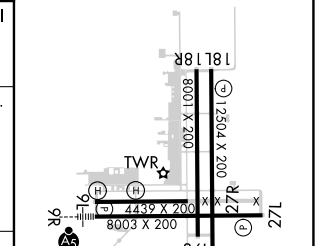
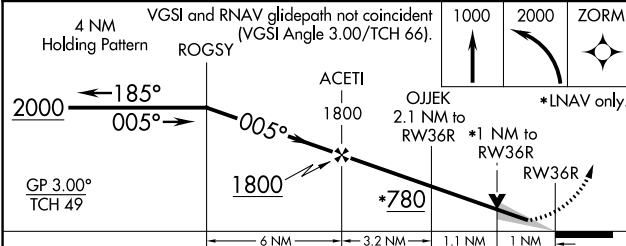
MALSRL

MISSED APPROACH:
Climb to 1000 then climbing left turn to 2000 direct ZORMI and hold.

| | | | | | |
|------------------------|--|---|-----------------------------------|-----------------------------------|-----------------------|
| ATIS 125.275 | JACKSONVILLE APP CON 127.775 377.075 | CECIL TOWER* 126.1 (CTAF) 0 235.625 | GND CON 121.625 226.675 | CLNC DEL 123.975 254.25 | GCO 135.075 |
|------------------------|--|---|-----------------------------------|-----------------------------------|-----------------------|



| | |
|----------------------|----------------|
| ELEV 80 | TDZE 72 |
| HIRL Rwy 36R and 36L | |
| REIL Rwy 36R and 36L | |



| CATEGORY | A | B | C | D |
|-------------------|----------------------|----------------------|------------------------|----------------------|
| LPV DA | | 272-½ | 200 (200-½) | |
| LNAV/VNAV DA | | 467-¾ | 395 (400-¾) | |
| LNAV MDA | 460-½ | 388 (400-½) | 460-⅝ | 388 (400-⅝) |
| C CIRCLING | 540-1 460 (500-1) | 560-1 480 (500-1) | 600-1½ 520 (600-1½) | 640-2 560 (600-2) |

SE-3, 31 OCT 2024 to 28 NOV 2024

SE-3, 31 OCT 2024 to 28 NOV 2024