

# RNAV (GPS) RWY 19

APCH CRS	Rwy Idg	8000'
187°	TDZE	1239
	Arprt Elev	1285

[USA]

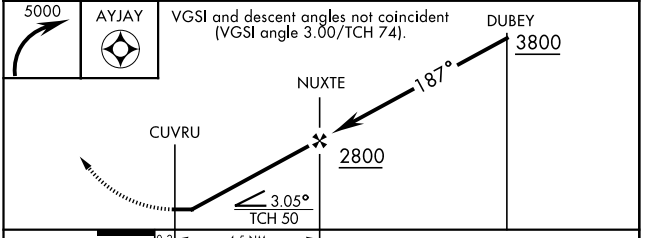
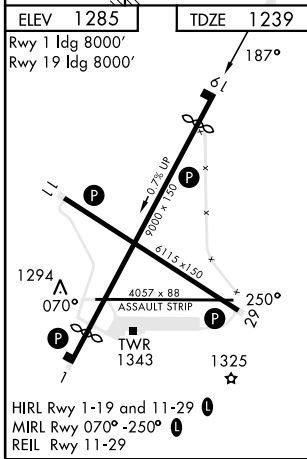
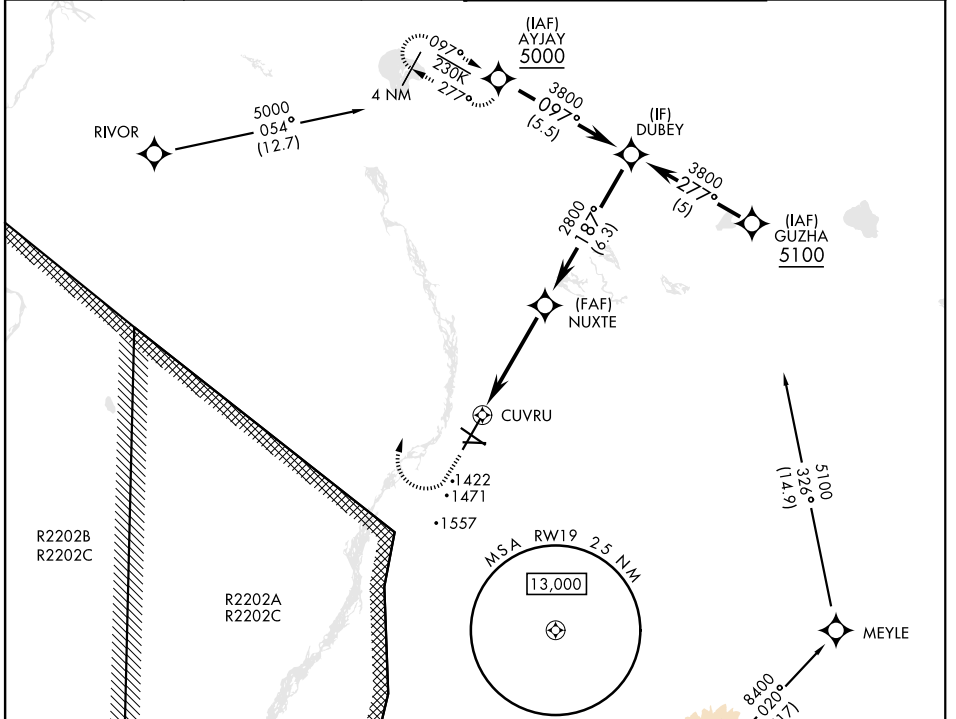
ALLEN AAF (PABI)

RNP APCH - GPS

**▼** \* Circling not authorized East of Rwy 1-19.

MISSED APPROACH: Climbing right turn to 5000, direct AYJAY and hold.

ATIS	ASOS	ANCHORAGE CENTER	CTAF	ALLEN TOWER *	GND CON
132.075	135.65	135.3 322.5	122.9	119.8 235.775 40.8 (E) FM	118.225 251.05



CATEGORY	A	B	C	D
LNAV MDA	1740-1 501 (500-1)	1740-1½ 501 (500-1½)		
<b>C</b> CIRCLING*	1740-1 455 (500-1)	1780-1 495 (500-1)	1860-1½ 575 (600-1½)	2040-2½ 755 (800-2½)

# RNAV (GPS) RWY 19

AK, 31 OCT 2024 to 26 DEC 2024

AK, 31 OCT 2024 to 26 DEC 2024