

DELTA JUNCTION/FORT GREELY, ALASKA

VOR/DME or TACAN RWY 19

VORTAC BIG 114.9 Chan 96	APCH CRS 197°	Rwy Idg 8000 TDZE 1239 Arprt Elev 1285
----------------------------------------------	-------------------------	-------------------------------------------------------------------

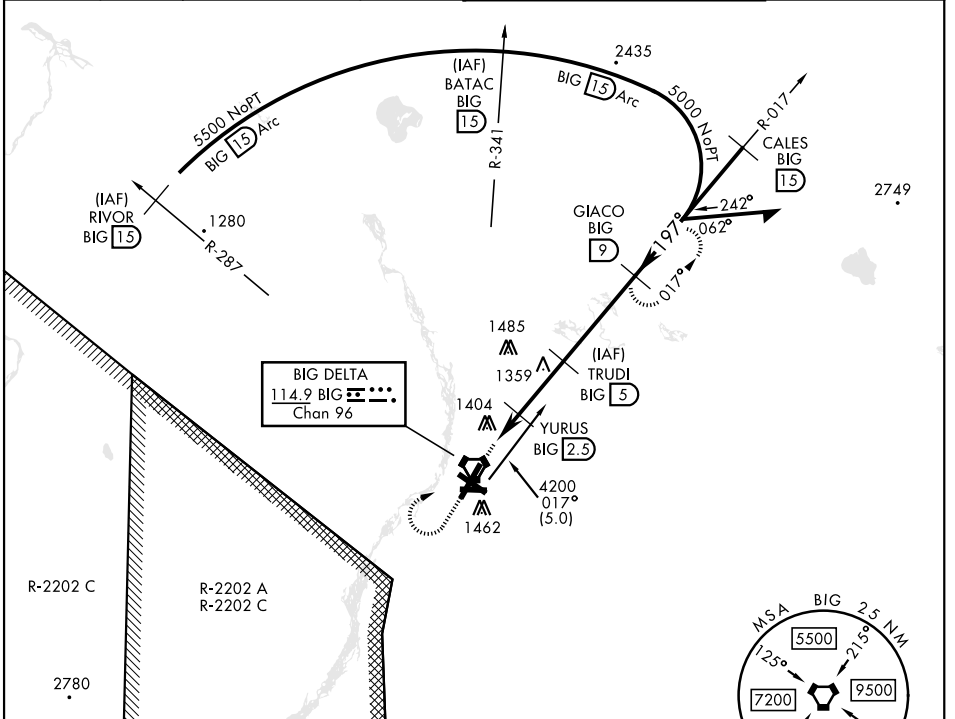
[USA]

ALLEN AAF (PABI)

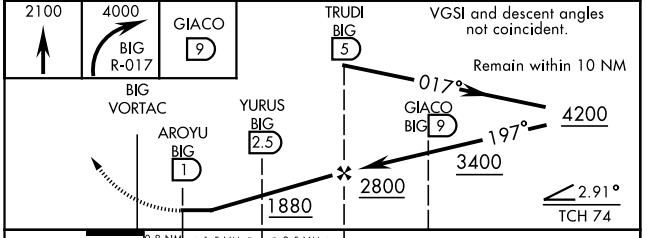
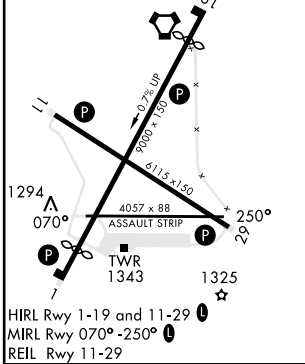
▼ *Circling not authorized East of Rwy 1-19.

MISSED APPROACH: Climb to 2100, then climbing right turn to 4000 via BIG R-017 to GIACO/9 DME and hold.

ATIS 132.075	ASOS 135.65	ANCHORAGE CENTER 135.3 322.5	CTAF 122.9	TOWER ★ 119.8 235.775 40.8 (E) FM	GND CON 118.225 251.05
------------------------	-----------------------	----------------------------------------	----------------------	---------------------------------------------	----------------------------------



ELEV 1285	TDZE 1239
Rwy 1 Idg 8000'	Rwy 19 Idg 8000'



CATEGORY	A	B	C	D
S-19	1660-1 421 (400-1)	1660-1¼ 421 (400-1¼)		
CIRCLING *	1720-1 435 (500-1)	1760-1 475 (500-1)	1760-1½ 475 (500-½)	1860-2 575 (600-2)

DELTA JUNCTION/FORT GREELY, ALASKA
Amdt 2B 05DEC19

64°00'N-145°43'W

ALLEN AAF (PABI)

VOR/DME or TACAN RWY 19

AK, 31 OCT 2024 to 26 DEC 2024

AK, 31 OCT 2024 to 26 DEC 2024